

REQUEST FOR QUOTE – Water Cooling System-Taroom WTP

RFQ # Q-2223-CS-30

Supplier Details:

Business Name	ABN
Trading Name	
Contact Person	Phone
Email Address	

Background

This work is for a consultancy service to carry out the preliminary investigation on the design/selection and installation of the cooling system in the Taroom water treatment plant (WTP). Taroom, a small town of Banana Shire Council (BSC) is situated approximately 300 km south of Rockhampton.

Taroom WTP receives the raw water from two bores that are located in Surat North, Great Artesian Basin. The depth of the two bores is 754 m and 785 m. In this WTP, the bore water is directly fed to a roof-mounted aerator, then the aerated water is chlorinated before the water falls into Reservoir 2 (Figures 1 & 2). The main aim of the aeration is to oxidize soluble iron and manganese present in the bore water. Then the water flows from Reservoir 2 to Reservoir 1 through the pipeline connected at the bottom. Depending on the operational requirement Reservoir 1 can be isolated from Reservoir 2 (Figures 3 & 4). The treated water from Reservoir 1 is pressure fed to the reticulation system of Taroom town (Figures 4 & 5).

Currently, one bore is in operation with a flow rate of 20 L/sec. In summer, especially when the demand is high both bores requires to operate to meet the water demand with a total flow rate of 30 L/sec. The average water temperature measured in the reservoir is 33.6 °C and the maximum water temperature can reach up to 40.9 °C. **Detailed raw water and treated water qualities will be provided via email upon request.** In this project, we are looking for a preliminary study for the concept design, installation, and operation of the cooling system to bring the water temperature down.

Standards

Works under this Consultancy shall be undertaken following current Australian Standards and Codes including but not limited to:

- WSA03-2011 Water Supply Code of Australia Version 3.1
- WS SPEC Water Services Specifications
- Capricorn Municipal Development Guidelines (CMDG)
- Plumbing and Drainage Regulation 2019

Scope of the works

- Concept design of a cooling system to bring the water temperatures in the range of 25 to 32 °C for water flow rates of 20 to 30 L/sec
- Find a suitable location to install the cooling system considering operational and safety requirements and also avoiding the additional pumping requirement
- Carry out the optional study to bring the temperature to different levels (25 °C, 28 °C, & 32 °C)
- Estimate the cost for the supply and installation
- Provide yearly operational and maintenance costs
- Provide a concept design including the report that can be used by the contractor to supply and install the cooling system

In the proposal following information should include but not limited to

- Timeframe for completing the project
- Prices including the price for provisional items
- Any proposed variances to the scope or program
- Any other specific requirements not addressed above



Figure 1: Aerator and inlet pipelines of Reservoir 2



Figure 2: Roof and aerator of Reservoir 2



Figure 3: Aerator and inlet pipelines of Reservoir 1

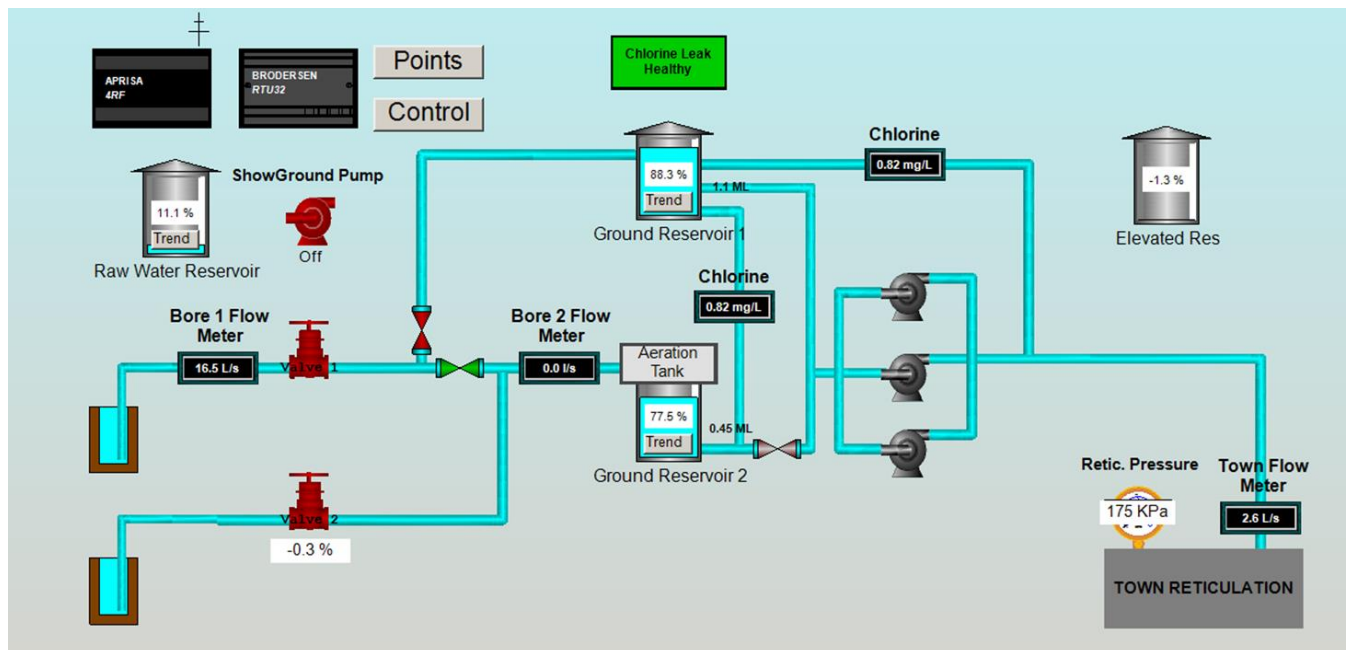


Figure 4: Snapshot of ClearSCADA for Taroom WTP showing the reservoirs, pumps, and bores



Figure 5: Aerial view of Taroom WTP showing the reservoirs, building, and lab

Quotation Deadline

11 am, Thursday, 18th August 2022

IMPORTANT: Before submitting your quote, please refer to the Standard Terms and Conditions available on the Banana Shire website.

Submission Information:

☐ Submit as per annexure or other

Mandatory requirements:

☐ None

Evaluation criteria

Criteria	Weightage
Price/Value for money/program	60%
Previous similar experience and project staff	40%

Quotation Submission

☐ Submit as per annexure

Comments:

Conflict of Interest

Please advise if you have an association or connection to current members of staff.

☐ YES ☐ NO

If yes, please indicate persons you have an association with:

By signing this form, you acknowledge that you have provided the correct information and have read, understood, and agree to the Banana Shire Council Standard Terms and Conditions.

Signature _____ Date _____

To ensure your quote is processed accurately and in a timely manner please adhere to the following:

- Provide completed BOQ (Bill of Quantity) if required.
- Complete attached Quotation Schedule
- All associated costs have been included (Travel, accommodation, signage etc.)
- Quotation format to be submitted in PDF format.
- Quotations shall be valid for (3) three calendar months after day of the closing of quotations.
- ONLY SUBMIT BY EMAIL to quotations@banana.qld.gov.au. Quotations received by paper or emailed to a different email will not be accepted.
- Provide all required documentation e.g., Insurance, forms, schedules etc.

Acceptance of Quote:

- BSC is not obliged to accept the lowest, or any quote, and may accept the quote most advantageous to it.
- BSC reserves the right to award the RFQ as a whole, in parts, to one or more suppliers, or not at all.
- No quote shall be taken as accepted and no contract will be formed, until the supplier
 - (a) executes and returns the Formal Instrument of Agreement to the RFQ, or alternatively
 - (b) receives a council issued purchase order to the price of the supply.
- Any variances are required to be submitted and approved prior to continuing. ONLY an amended council issued purchase order reflecting the required variances is accepted for any additional costs.

Submissions and enquiries by email to quotations@banana.qld.gov.au or to speak to a representative, please call 07 4992 9500.

Please use RFQ # as reference during all correspondence.