

SEWER PUMP STATION INSPECTION REPORT

Asset ID	Wahroonga Pump Station
Asset Location	Wahroonga Street Biloela
Special Access Requirements	In open space - Contractor Vehicle parking next to pump station

Relining required to depth of (mm)	5700mm
Diameter (mm)	1800mm
Concrete Repairs to Walls	No
Embedded Steel Treatment/Repair	No
Rust Treatment and Coating of Pipes and Flanges	3
Pipe Penetration Repair	No
Chamber Wall Condition (Class)	3
Existing Surface Profile	10 – 15mm

Notes:

Pump Station to be relined in live condition

Relining contractor to provide own power and water

Soffit and edge of access hatch to be relined as well as all walls to depth as nominated

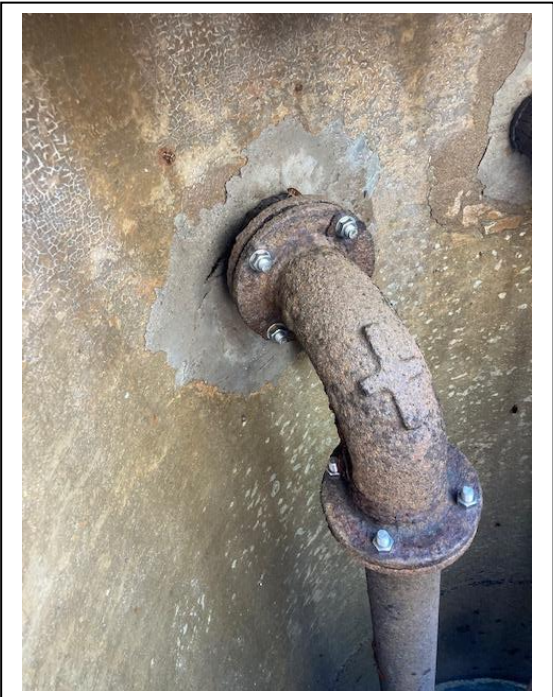
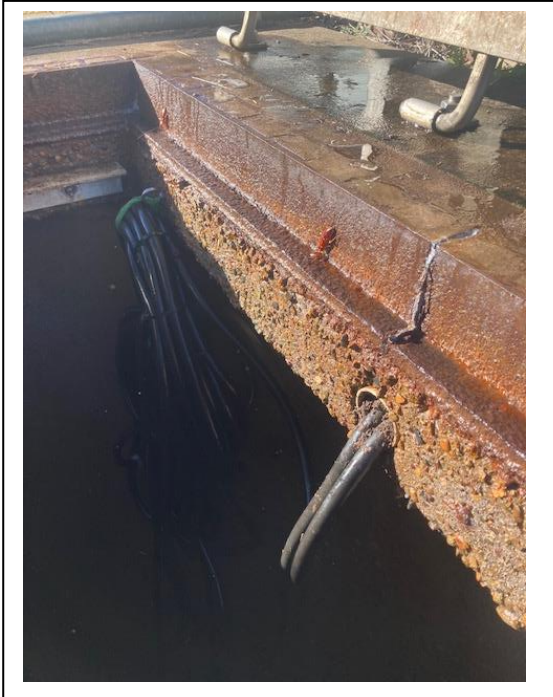
REMEDIAION PRIORIY RATING:

Medium

Photos (see attached)

Date of Inspection: July 2022





End of Report.