

 **JetDryer**

# Eco Hand Dryer



High Speed

I N S T R U C T I O N M A N U A L

# Eco Surface Mounted High Speed Hand Dryer

## Operating Instructions and Parts Manual (Automatic)



### Technical Specifications

Item Category	Performance Data
Operating Voltage	220 - 240Vac, 50Hz, 900 WATTS
Warm Air Speed Output	64 m/s
Air Output Temperature	77°F (25°C) - Ambient Temperature 68°F (20°C)
Motor Type	23,000 rpm, Brush Type, Dual Ball Bearings
Motor Thermal Protection	Auto Resetting Thermostat turns unit off, 240V at 221°F (105°C) - EURO Spec
Heater Element	250W
Heater Thermal Protection	Auto Resetting Thermostat turns unit off at, 149°F (65°C)
Drying Time	Less than 15 seconds
Circuit Operation	Infrared Automatic, self adjusting
Sensor Range	100 mm
Timing Protection	60 seconds auto shut off
Drip Proof	IP22
Isolation	CLASS 1
Net Weight	4.5 kg
Shipping Weight	5 kg
Unit Size	280mm W x 300mm H x 175mm D
Item Code	Cover Type/Finish
BE08W	Die Cast Aluminium; Epoxy Polyester Powder Coating (White)
BE08S	Die Cast Aluminium; Epoxy Polyester Powder Coating (Silver)
BE08C	Die Cast Aluminium; Bright Chrome

# Eco Surface Mounted High Speed Hand Dryer

## Operating Instructions and Parts Manual (Automatic)

### General Safety Information

#### • WARNING

**Failure to properly ground unit could result in electrical shock and/or death.**

This product is intended for installation by a qualified service person. Use AWAG No.16 solid conductor for wiring.

Disconnect power at the service breaker before installing or servicing.

**NOT FOR HOUSEHOLD USE - MAY CAUSE BURNS**  
**"IMPROPRE A L'USAGE DOMESTIQUE - PUET OCCASIONNER."**

All units must be supplied with a 3-wire service. The ground wire must be connected with the dryers back plate.

**NOTE: Do not install dryer over wash basin.**

Type Y attachment

If the power supply cord is damaged, it must be replaced by the manufacturer or its service agent or a similar qualified person in order to avoid a hazard.

Means for disconnection must be incorporated in the fixed wiring in accordance with the wiring rules.

### Installation

1. Make sure power supply breaker is switched off. Installation must be carried out in accordance with the current edition of the local wiring regulations code having jurisdiction. Installation should be performed only by a qualified electrician.

2. Place template against wall at desired height (see mounting height recommendations) and mark locations of 4 mounting holes and wire service entry at knockout (KO) location.

**NOTE: For two or more dryers, dryers should be no closer than 24 inches (610 mm) on centre.**

3. Remove and retain 2 cover screws and cover.

4. Connect supply wires to terminal block where indicated and connect ground wire to baseplate with ground screw.

#### Connections:

a. Connect the live wire (coloured red or brown) to the terminal block marked "L".

b. Connect the neutral wire (coloured black or blue) to the terminal block marked "N".

c. Connect the ground wire (coloured green or green and yellow) to the green screw marked "⊕".

**Note that the colour of live and neutral wires depends on voltage of supply service.**

5. Replace cover. Do not over-tighten screws.

# Eco Surface Mounted High Speed Hand Dryer

## Operating Instructions and Parts Manual (Automatic)

### Recommended Mounting Heights

From floor to bottom of dryer.

Men's	Ladies	Children, ages 11-17	Children, ages 3-10	Disabled
43"	41"	39"	33"	35"
109 cm	104 cm	99 cm	84 cm	89 cm

### Cleaning and Maintenance

*Periodic cleaning of the unit is recommended to ensure optimum performance.*

1. Disconnect electrical supply.
2. Remove the two cover-mounting screws
3. Remove the cover
4. Clean all dust lint from the interior of the dryer.
5. Wipe the cover with a damp cloth and mild cleaning solution. Do not soak. Never use abrasives to clean the cover.
6. Replace the cover. Do not over tighten the screws.



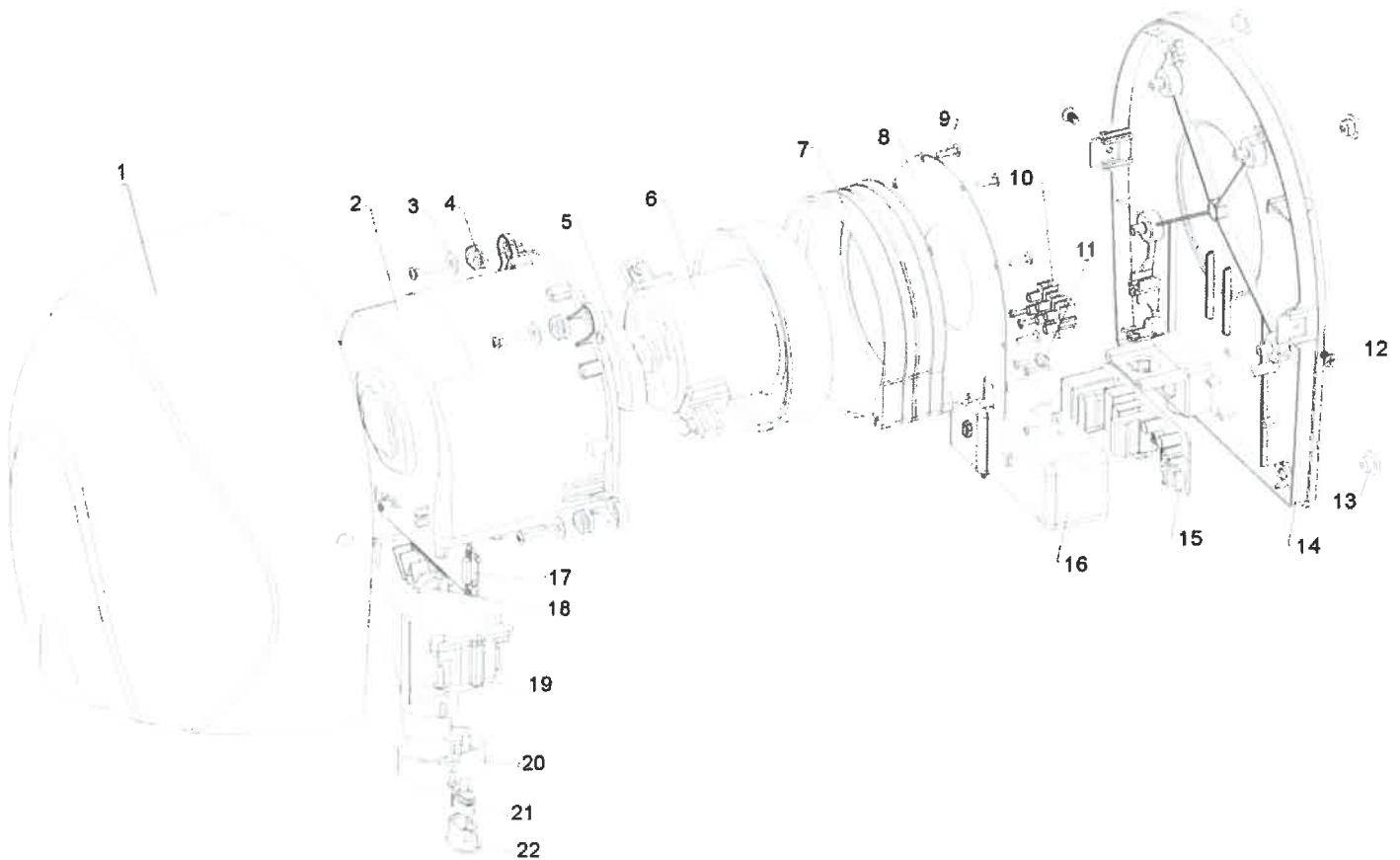
### Operation

- No touch operation.
- Shake excess water from hands.
- Place hands under the outlet to start operation.
- Rub hands lightly and rapidly.
- Stops automatically after hands are removed.

# Eco Surface Mounted High Speed Hand Dryer

## Operating Instructions and Parts Manual (Automatic)

### Diagram and Parts List



- |     |                           |     |                      |
|-----|---------------------------|-----|----------------------|
| 1.  | Die Cast Cover            | 12. | Cover Screws         |
| 2.  | Motor Housing             | 13. | Nylon Bushes         |
| 3.  | Rubber Washer             | 14. | Base Plate           |
| 4.  | Shock Absorber            | 15. | Circuit Board Module |
| 5.  | Motor Rubber              | 16. | Circuit Board Cover  |
| 6.  | Rubber                    | 17. | Heater Element       |
| 7.  | Blower Housing            | 18. | Baffle Plate         |
| 8.  | Blower Mounting Plate     | 19. | Air Outlet /baffle   |
| 9.  | Mounting Plate Screws     | 20. | Senor Bracket        |
| 10. | Electrical Terminal Block | 21. | Sensor Module        |
| 11. | Cable Clamp               | 22. | Sensor Screen        |



## JetDryer Eco Warranty

### 3 Years Parts, 1 Year Labour

- Where possible, labour will be carried out onsite within major capital cities. Otherwise the hand dryer must be returned to a JetDryer authorized repair facility located - Gold Coast, Sydney & Melbourne
- Warranty is limited to 350,000 uses during warranty period.
- Warranty is effective at the date of purchase.
- Proof of purchase and serial number must be supplied for warranty to be valid.
- Without proof, all work/parts are chargeable. All parts replaced will be property of JetDryer.
- All work will be carried out by JetDryer or its authorised agents.
- Please note that the decision to repair or replace your machine is at the sole discretion of JetDryer.
- If any part is no longer available or out of manufacture, JetDryer will replace it with a functional replacement part.

JET DRYER does not guarantee the repair or replacement due to the following


- Normal wear and tear, cosmetic damage IE dents and scratches
- If returning the unit, it is packaged up with an equal amount of protection, failure to secure the unit in packaging resulting in damage is not covered under warranty, shipping charges in this instance are the responsibility of the purchaser

- Accidental damage, faults caused by negligent use, lack of maintenance (ie: filter changes & emptying of water tray), misuse, vandalism, neglect, incorrect installation, careless operation or handling of the hand dryer
- Use of parts not installed by JetDryer or its authorised agents or according to JetDryer instruction manual.
- Use of parts not authorised by JetDryer
- Repairs or alterations made by other than JetDryer or its authorised agents
- Costs arising from failing to adjust controls correctly or by not following operating instructions
- Costs involved with remounting and removal of unit
- Any damage caused by someone doing maintenance who is not a Jet Dryer authorised technician
- When exchanging parts or the actual unit the original becomes property of JetDryer
- Cosmetic design and colour may vary from unit purchased when it is replaced under warranty
- If a part is replaced under warranty, note that this does not extend the warranty or extended warranty period
- The warranty or extended warranty is transferrable, however any transfer does not extend the original term.

# JetDryer Eco

JetDryer Eco combines refined style with rugged efficiency providing you with a great bathroom hand drying experience every time. JetDryer Eco can save you up to 85% in annual costs compared to conventional hand dryers.

## Technical Specifications

Item category	Performance
Model Number	JDECO-W
Operating voltage	220-240 Vac, 50Hz
Air speed	64 m/s
Motor type	640W adjustable brush type
Heater element	240W thermal protected
Rating power	900W
Drying time	10 seconds
Circuit operation	Infrared automatic, self adjusting
Timing protection	60 seconds auto shut off
Drip proof	IPX22
Isolation	Class I
Net weight	4.5kg
Unit size (W x H x D)	280 x 300 x 175mm
Finish	Die cast aluminium white/silver/chrome
Decibel rating	76 dBA @ 1 mtr
Approvals	EC/EN60335-1 & IEC/EN60335-2-23 Compliant to EMC directive according to EN55014-1, EN55014-2, EN61000-3-2, EN61000-3-3
Disabled compliant 	When installed to AS1428
Power connection	3-pin plug and lead



# JetDryer



**Recommended Installation Height**

From Floor to Top of Hand Dryer  
= 1200 - 1350 mm

From Floor to Bottom of Hand Dryer  
= 900 - 1050 mm

**Disabled People's Washroom**

From Floor to Bottom of Hand Dryer  
= 1000 mm

**Electrical Installation Options**

Simple electrical connection by plug and lead as supplied, or can be direct wired by electrician.



Disabled compliant when installed in accordance with AS1428.

**ECO JET DRYER JDECO-X [X = S (Silver), W (White), C (Chrome)]**

**TECHNICAL SPECIFICATIONS**

**Electrical**

Input voltage: 230-240V AC, Single Phase 50Hz

Rated Power: 900W, 4.4 Amp

Motor Type: Vacuum, Brush Resistance Motor

Energy Consumption per use: 0.0032 kWh

Standby Power: 1 W

**Construction**

Powder coated Die Cast Aluminum Casing

Colour Finishes: White, Silver, Polished Chrome

Water Protection: IP22

**Filtration**

N/A

**Operation**

Infra-Red Touch Free Operation

Hand Drying Time: Approx. 10 - 20 Seconds

Airflow: 320+ kph

Operating Noise: 70 DbA

**Weight**

Unit Weight: 4.5kg

**Warranty**

3 year Parts, 1 Year Labour

**Product Certification**

Approved to IEC/EN60335-1 and IEC/EN60335-2-23

Compliant to EMC directive according to EN55014-1, EN55014-2, EN61000-3-2, EN61000-3-3



## General Safety Information:

**WARNING** This product is intended for installation by a qualified service person. Use AWG No. 16 solid conductor for wiring.

**WARNING** Failure to properly ground unit Could result in severe electrical shock And/or death.

**WARNING** Disconnect power at the service breaker before installing or servicing. NOT FOR HOUSEHOLD USE –MAY CAUSE BURNS. "IMPROPRE A L'USAGE DOMESTIQUE – PUET OCCASIONNER."

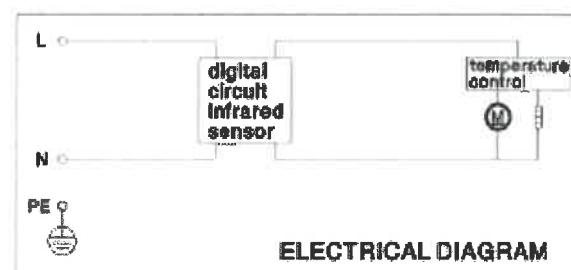
**WARNING** All units must be supplied with a 3-wire service. The ground wire must be connected to the dryer's backplate.

\* Note : Do not install dryer over washbasin \*

### Type Y attachment

If the power supply cord is damaged, it must be replaced by the manufacturer or its service agent or a similar qualified person in order to avoid a hazard.

Means for disconnection must be incorporated in the fixed wiring in accordance with the wiring rules.



## Installation:

1. Make sure power supply breaker is switched off. Installation must be carried out in accordance with the current edition of local wiring regulations code having jurisdiction. Installation should be performed only by a qualified electrician.
2. Place template against wall at desired height (see mounting height recommendations) and mark locations of 4 mounting holes and wire service entry at knockout (KO) location.

**Note:** for two or more dryers, dryers should be no closer than 24 inches (610 mm) on centre.

3. Remove and retain 2 cover screws and cover.
4. Connect supply wires to terminal block where indicated and connect ground wire to base plate with ground screw

Connections:

- A. Connect the live wire (coloured red and black) to the terminal block marked "L".
- B. Connect the neutral wire (coloured white or blue) to the terminal block marked "N".

- C. Connect the ground wire (coloured green or green and yellow) to the green screw marked "⊕".

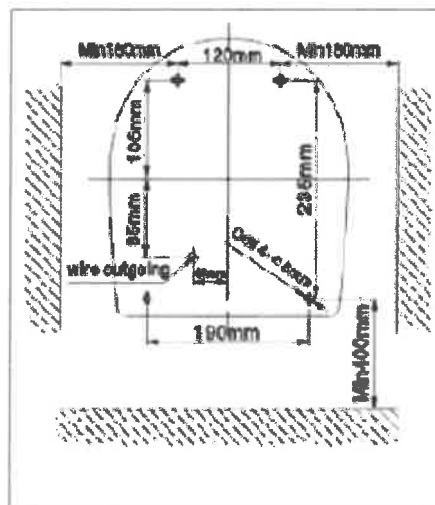
Note that colours of live and neutral wires depend on voltage of supply service.

5. Replace cover. Do not over-tighten screws.

### Recommended Mounting Heights

- from bottom edge of dryer above finished floor (AFF)

Men's	43"	109cm
Ladies	41"	104cm
Children, ages 11-17	39"	99cm
Children, ages 3 – 10	33"	84cm
Disabled	35"	89cm



### Cleaning and Maintenance

Periodic cleaning of the unit is recommended to ensure optimum performance.

- Disconnect the electrical supply.
- Remove the two cover-mounting screws.
- Remove the cover.
- Clean all dust lint from the interior of the dryer.
- Wipe the cover with a soap cloth and mild cleaning solution. Do not soak. Never use abrasives to clean the cover.
- Replace the cover. Do not over tighten the screws.

### Operation

- No-touch Operation
- Shake excess water from hands
- Place hands under the dryer
- Rub hands whilst drying
- Stops automatically after hands are removed.