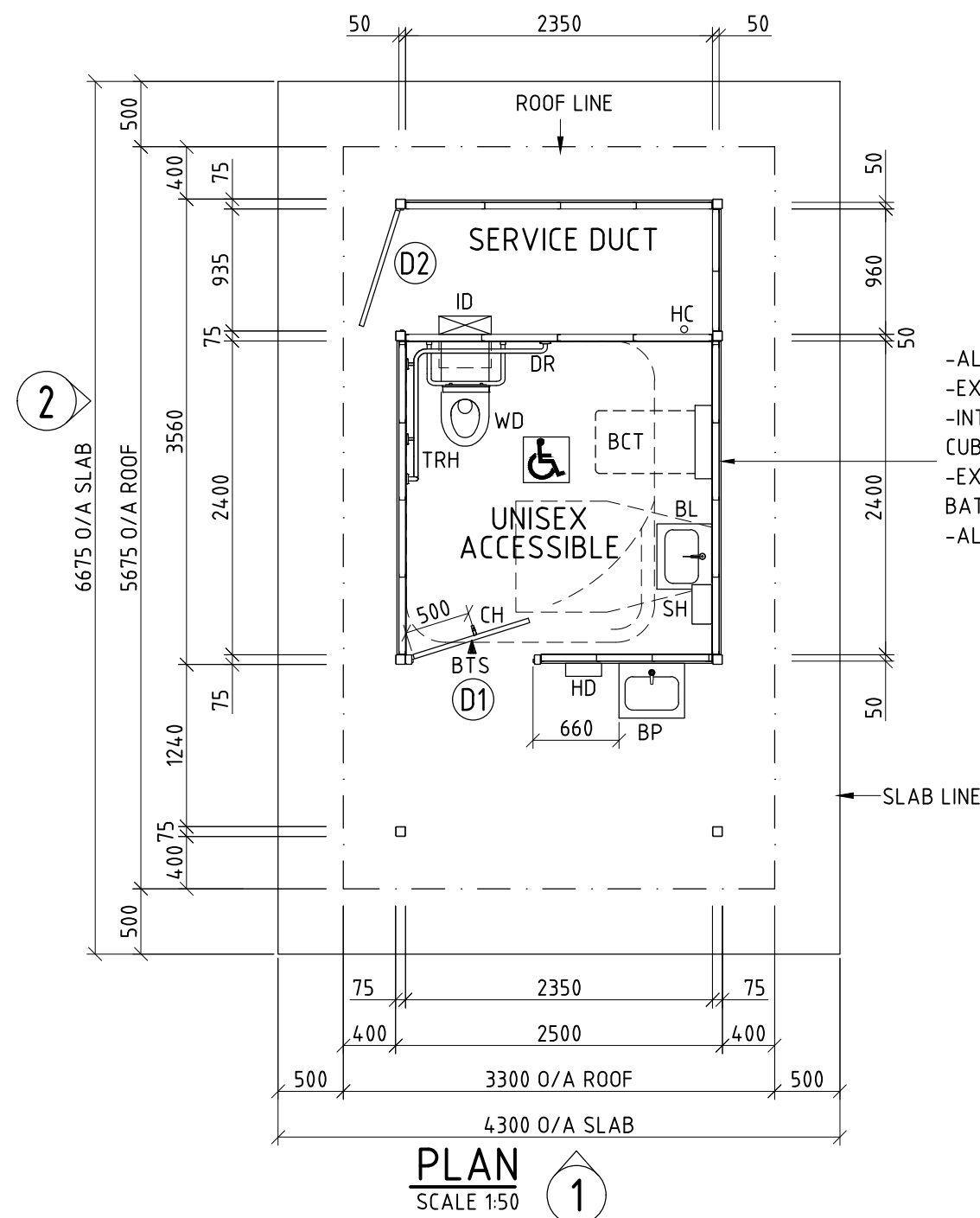


D1-2045x925 COLORBOND CLAD DOOR-STEEL FRAME  
D2-2045x925 COLORBOND CLAD DOOR-STEEL FRAME

WD = STAINLESS STEEL DISABLED COMPLIANT PAN  
ID = INDUCT PLASTIC CISTERN  
BL = STAINLESS STEEL BASIN C/W FLARED LEVER SELF  
CLOSING COLD WATER TAP & COLORBOND SHROUD  
BP = STAINLESS STEEL BASIN C/W TIMED FLOW PUSH BUTTON  
COLD WATER TAP & COLORBOND SHROUD  
HC = BRASS VANDAL PROOF KEYED TAP WITH HOSE MOUNT  
BTS = BRAILLE TACTILE SIGNAGE  
DR = DISABLED COMPLIANT RAILS C/W COMPLIANT BACK REST  
SH = STAINLESS STEEL SHELF  
CH = COAT HOOK  
BCT = VERTICAL POLYETHYLENE BABY CHANGE TABLE  
HD = METLAM ECOSLENDER SLIMLINE HAND DRYER

TRH = TOILET ROLL HOLDER



APPROVED	DATE:
----------	-------

REVISION		DATE:	DRAWN BY.	<div><div><div><div><div><div></div></div></div><div><div></div></div></div><div><div>©</div><div>LANDMARK PRODUCTS PTY. LTD.</div></div><div><div>THIS DOCUMENT IS AND SHALL REMAIN THE PROPERTY OF LANDMARK PRODUCTS LIMITED.</div><div>UNAUTHORISED USE OF THIS DOCUMENT IN ANY FORM IS PROHIBITED.</div></div></div><div><div>CHECKED BY:</div><div>DATE:</div></div></div>	CLIENT NAME BANANA SHIRE COUNCIL		PROJECT No. 46860	PAGE A3
6					PROJECT	DATE: 27/06/22	DRAWN JEO	
5					47 PRAIRIE ST, BILOELA, QLD. 4715 (LOT PLAN: 1SP252847)	DRAWING No. 46860-1	SCALE NOTES	
4					MOD K9501 "CARETAKER" 1D (SKILLION) RESTROOM	SHEET No. 101	REV. 0	
3					DRAWING TITLE BA - PLAN			
2								
1								

Landmark

open space structures & solutions

Landmark Products Pty. Ltd.

A.B.N. 99 112 000 843

4/27 Lear Jet Drive, Caboolture

P.O. Box 1635, Caboolture

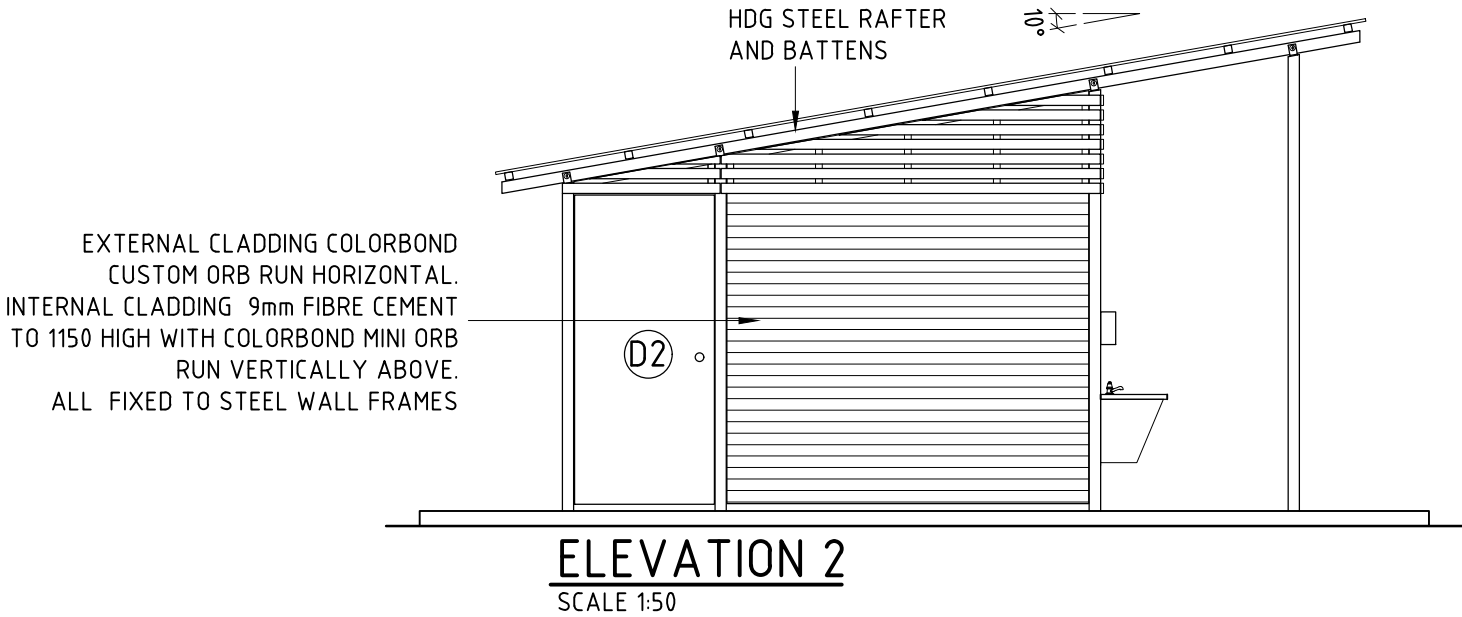
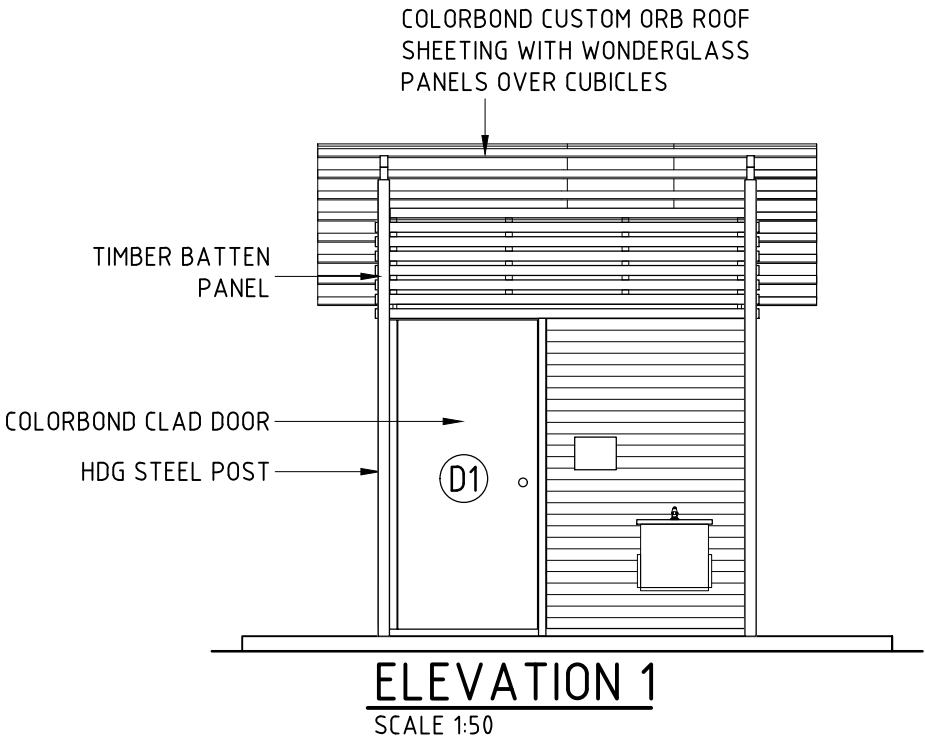
Queensland 4510

PH: 1300 768 230

www.landmarkpro.com.au

landmark@landmarkpro.com.au

ALL DIMENSIONS IN MILLIMETRES - DO NOT SCALE



- GENERAL NOTES:**
1. DURING CONSTRUCTION THE STRUCTURE SHALL BE MAINTAINED IN A STABLE CONDITION AND NO PART SHALL BE OVER STRESSED.
  2. PRIOR TO COMMENCEMENT OF WORKS THE BUILDER SHALL SATISFY THEMSELVES OF THE CORRECT LOCATIONS OF ALL EXISTING SERVICES WHETHER INDICATED OR NOT ON THE PLANS.
  3. LOCATING OF THE STRUCTURE, INCLUDING CO-ORDINATES IF APPLICABLE, IS THE RESPONSIBILITY OF THE CLIENT AND/OR THE CLIENT'S SITE REPRESENTATIVE.
  4. STRUCTURE HAS BEEN DESIGNED AS A CLASS 10A STRUCTURE AND IN ACCORDANCE TO THE FOLLOWING AUSTRALIAN STANDARDS:  
- AS1170.1, AS1170.2, AS1720.1, AS3600 AND AS4100, AS1664.
  5. STRUCTURE IS SUITABLE FOR N3 AREAS AND HAS BEEN DESIGNED WITH AN ANNUAL RECURRENCE INTERVAL OF 100 YEARS.
  6. SITE COVERAGE IS 18.73m<sup>2</sup> (ROOF AREA).
  7. THE FOOTING HAS BEEN DESIGNED ASSUMING:  
- SITE CLASS H (CLIENT ADVISED)  
- ALLOWABLE SOIL BEARING CAPACITY OF 100kPa  
- SOIL ADHESION OF 10kPa  
(TO BE VERIFIED ON SITE).
  8. FOR SLABS ON GROUND, ALL TOPSOIL AND UPPER STRATA CONTAINING SOFT OR ORGANIC MATTER ARE TO BE REMOVED AND REPLACED WITH SELECT COMPACTED FILL.
  9. ALL FILL TO BE CLEAN, PLACED IN LAYERS NOT EXCEEDING 200mm AND COMPACTED TO 95% STANDARD COMPACTION.
  10. EARTHWORKS SHALL BE CARRIED OUT IN ACCORDANCE WITH CRITERIA AND PROCEDURES SET OUT IN AS3798 *GUIDELINES ON EARTHWORKS FOR COMMERCIAL AND RESIDENTIAL DEVELOPMENTS*.

CLIENTS DESIGN APPROVAL

APPROVED

DATE:

REVISION		DATE:	DRAWN BY:	<div>© LANDMARK PRODUCTS PTY. LTD.</div> <div>THIS DOCUMENT IS AND SHALL REMAIN THE PROPERTY OF LANDMARK PRODUCTS LIMITED. UNAUTHORISED USE OF THIS DOCUMENT IN ANY FORM IS PROHIBITED.</div> <div>CHECKED BY:DATE:</div>	<div><div><div></div></div><div>Landmark</div><div>open space structures &amp; solutions</div></div> <div>Landmark Products Pty. Ltd.      PH: 1300 768 230 A.B.N. 99 112 000 843 4/27 Lear Jet Drive, Caboolture P.O. Box 1635, Caboolture      www.landmarkpro.com.au Queensland 4510      landmark@landmarkpro.com.au</div>	CLIENT NAME		PROJECT No.	PAGE
6						BANANA SHIRE COUNCIL		46860	A3
5						PROJECT		DATE:	DRAWN
4						47 PRAIRIE ST, BILOELA, QLD. 4715 (LOT PLAN: 1SP252847)		27/06/22	JEO
3						MOD K9501 "CARETAKER" 1D (SKILLION) RESTROOM		DRAWING No.	SCALE
2						DRAWING TITLE		46860-1	NOTED
1						BA - ELEVATIONS		SHEET No.	REV.
								102	0



## DATE:

REVISION		DATE:	DRAWN BY.	<div><div><div><div><div><div></div></div></div><div><div><div></div></div></div></div><div><div><div></div></div></div><div><div><div></div></div></div></div><div>© LANDMARK PRODUCTS PTY. LTD.</div><div>THIS DOCUMENT IS AND SHALL REMAIN THE PROPERTY OF LANDMARK PRODUCTS LIMITED.</div><div>UNAUTHORISED USE OF THIS DOCUMENT IN ANY FORM IS PROHIBITED.</div></div> <div><div><div><div><div></div></div><div><div></div></div></div><div><div><div></div></div><div><div></div></div></div></div><div>Landmark</div><div>open space structures &amp; solutions</div></div> <div><div>Landmark Products Pty. Ltd.</div><div>PH: 1300 768 230</div><div>A.B.N. 99 112 000 843</div><div>4/27 Lear Jet Drive, Caboolture</div><div>P.O. Box 1635, Caboolture</div><div>Queensland 4510</div><div><div>www.landmarkpro.com.au</div><div>landmark@landmarkpro.com.au</div></div></div> <tr><td>6</td><td></td><td></td><td></td><td>CLIENT NAME</td><td>BANANA SHIRE COUNCIL</td><td>PROJECT No.</td><td>46860</td><td>PAGE</td><td>A3</td></tr> <tr><td>5</td><td></td><td></td><td></td><td>PROJECT</td><td>47 PRAIRIE ST, BILOELA, QLD. 4715 (LOT PLAN: 1SP252847)</td><td>DATE:</td><td>27/06/22</td><td>DRAWING</td><td>JEO</td></tr> <tr><td>4</td><td></td><td></td><td></td><td></td><td>MOD K9501 "CARETAKER" 1D (SKILLION) RESTROOM</td><td>DRAWING No.</td><td>46860-1</td><td>SCALE</td><td>NOTES</td></tr> <tr><td>3</td><td></td><td></td><td></td><td></td><td></td><td></td><td></td><td></td><td></td></tr> <tr><td>2</td><td></td><td></td><td></td><td>CHECKED BY:</td><td>DATE:</td><td>SHEET No.</td><td>103</td><td>REV.</td><td>0</td></tr> <tr><td>1</td><td></td><td></td><td></td><td></td><td></td><td>DRAWING TITLE</td><td>BA - SECTION</td><td></td><td></td></tr>	6				CLIENT NAME	BANANA SHIRE COUNCIL	PROJECT No.	46860	PAGE	A3	5				PROJECT	47 PRAIRIE ST, BILOELA, QLD. 4715 (LOT PLAN: 1SP252847)	DATE:	27/06/22	DRAWING	JEO	4					MOD K9501 "CARETAKER" 1D (SKILLION) RESTROOM	DRAWING No.	46860-1	SCALE	NOTES	3										2				CHECKED BY:	DATE:	SHEET No.	103	REV.	0	1						DRAWING TITLE	BA - SECTION		
6					CLIENT NAME	BANANA SHIRE COUNCIL	PROJECT No.	46860	PAGE	A3																																																						
5					PROJECT	47 PRAIRIE ST, BILOELA, QLD. 4715 (LOT PLAN: 1SP252847)	DATE:	27/06/22	DRAWING	JEO																																																						
4						MOD K9501 "CARETAKER" 1D (SKILLION) RESTROOM	DRAWING No.	46860-1	SCALE	NOTES																																																						
3																																																																
2					CHECKED BY:	DATE:	SHEET No.	103	REV.	0																																																						
1						DRAWING TITLE	BA - SECTION																																																									

**ALL DIMENSIONS IN MILLIMETRES - DO NOT SCALE**

STRUCTURAL NOTES:

S1. UNLESS NOTED OTHERWISE, ALL TIMBER IS SPECIFIED AS FOLLOWS:-

ALL PINE TIMBER TO BE LOSP TREATED MGP10.

ALL HARDWOOD TIMBER TO BE ACQ TREATED F17 HARDWOOD.

ALL MACHINED / CUT SURFACES TO BE SUITABLY RETREATED  
WITH A *LANDMARK PRODUCTS* APPROVED COMPOUND.

S2. UNLESS NOTED OTHERWISE, ALL STEEL TO BE:

- PLATES: GRADE 250, HOT DIP GALVANISED

- SHS/RHS/CHS: GRADE 350, HOT DIP GALVANISED

- HOT ROLLED SECTIONS: GRADE 300, HOT DIP GALVANISED

- FIXINGS: 4.6/S BOLTS, HOT DIP GALVANISED

S3. UNLESS NOTED OTHERWISE, ALL WELDS TO BE

5mm CONTINUOUS FILLET, CATEGORY GP,

FROM E48xx ELECTRODES OR W50x WIRE.

S4. ALL STEEL AND TIMBER TO BE FABRICATED AND ERECTED

WITH GOOD BUILDING PRACTICE AND IN ACCORDANCE

WITH AS4100, AS1554, AS1720 AND AS1684.1.

FRAMING LEGEND:

**P1-P4: 75x3 SHS POST, FIXED TO FOOTING WITH 10 THK BASEPLATE**

C/W 2-M12 CHEMSET (110 EMBEDMENT)

DP1: 75x50x3 RHS DOOR POST, FIXED TO FOOTING WITH 10 THK

BASEPLATE C/W 2-M12 CHEMSET (110 EMBEDMENT).

R1: 75x50x3 RHS RAFTER FIXED TO POST WITH 2-50x5 PLATES

C/W 1-M12 ANTI VANDAL BOLT.

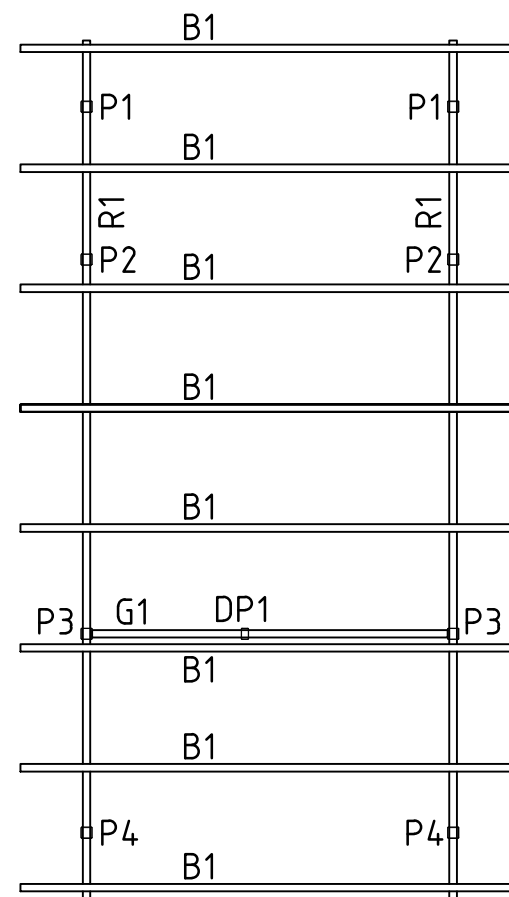
**B1: 50x2 SHS ROOF BATTEN FIXED TO RAFTER WITH 1-50x5 PLATE**

C/W 1-M12 BOLT.

**G1: 50x2 SHS GIRT FIXED TO POST WITH 50x5 PLATE C/W 1-M12 ANTI**

VANDAL BOLT. FIXED TO DOOR POST WITH 2-50x5 PLATES C/W 1-M12

ANTI VANDAL BOLT.



## FRAMING LAYOUT

SCALE 1:50

REVISION		DATE:	DRAWN BY:	<div><div><div><div><div><div></div></div></div><div><div><div></div></div></div></div><div><div><div></div></div></div><div><div><div></div></div></div></div><div><div><div></div></div></div><div><div><div></div></div></div></div> <div><div><div></div></div></div> <div><div><div></div></div></div> <div><div><div></div></div></div> <div><div><div></div></div></div> <div><div><div></div></div></div> <div><div><div></div></div></div> <div><div><div></div></div></div> <div><div><div></div></div></div> <div><div><div></div></div></div> <div><div><div></div></div></div> <div><div><div></div></div></div> <div><div><div></div></div></div> <div><div><div></div></div></div> <div><div><div></div></div></div> <div><div><div></div></div></div> <div><div><div></div></div></div> <div><div><div></div></div></div> <div><div><div></div></div></div> <div><div><div></div></div></div> <div><div><div></div></div></div> <div><div><div></div></div></div> <div><div><div></div></div></div> <div><div><div></div></div></div> <div><div><div></div></div></div> <div><div><div></div></div></div> <div><div><div></div></div></div> <div><div><div></div></div></div> <div><div><div></div></div></div> <div><div><div></div></div></div> <div><div><div></div></div></div> <div><div><div></div></div></div> <div><div><div></div></div></div> <div><div><div></div></div></div> <div><div><div></div></div></div> <div><div><div></div></div></div> <div><div><div></div></div></div> <div><div><div></div></div></div> <div><div><div></div></div></div> <div><div><div></div></div></div> <div><div><div></div></div></div> <div><div><div></div></div></div> <div><div><div></div></div></div> <div><div><div></div></div></div> <div><div><div></div></div></div> <div><div><div></div></div></div> <div><div><div></div></div></div> <div><div><div></div></div></div> <div><div><div></div></div></div> <div><div><div></div></div></div> <div><div><div></div></div></div> <div><div><div></div></div></div> <div><div><div></div></div></div> <div><div><div></div></div></div> <div><div><div></div></div></div> <div><div><div></div></div></div> <div><div><div></div></div></div> <div><div><div></div></div></div> <div><div><div></div></div></div> <div><div><div></div></div></div> <div><div><div></div></div></div> <div><div><div></div></div></div> <div><div><div></div></div></div> <div><div><div></div></div></div> <div><div><div></div></div></div> <div><div><div></div></div></div> <div><div><div></div></div></div> <div><div><div></div></div></div> <div><div><div></div></div></div> <div><div><div></div></div></div> <div><div><div></div></div></div> <div><div><div></div></div></div> <div><div><div></div></div></div> <div><div><div></div></div></div> <div><div><div></div></div></div> <div><div><div></div></div></div> <div><div><div></div></div></div> <div><div><div></div></div></div> <div><div><div></div></div></div> <div><div><div></div></div></div> <div><div><div></div></div></div> <div><div><div></div></div></div> <div><div><div></div></div></div> <div><div><div></div></div></div> <div><div><div></div></div></div> <div><div><div></div></div></div> <div><div><div></div></div></div> <div><div><div></div></div></div> <div><div><div></div></div></div> <div><div><div></div></div></div> <div><div><div></div></div></div> <div><div><div></div></div></div> <div><div><div></div></div></div> <div><div><div></div></div></div> <div><div><div></div></div></div> <div><div><div></div></div></div> <div><div><div></div></div></div> <div><div><div></div></div></div> <div><div><div></div></div></div> <div><div><div></div></div></div> <div><div><div></div></div></div> <div><div><div></div></div></div> <div><div><div></div></div></div> <div><div><div></div></div></div> <div><div><div></div></div></div> <div><div><div></div></div></div> <div><div><div></div></div></div> <div><div><div></div></div></div> <div><div><div></div></div></div> <div><div><div></div></div></div> <div><div><div></div></div></div> <div><div><div></div></div></div> <div><div><div></div></div></div> <div><div><div></div></div></div> <div><div><div></div></div></div> <div><div><div></div></div></div> <div><div><div></div></div></div> <div><div><div></div></div></div> <div><div><div></div></div></div> <div><div><div></div></div></div> <div><div><div></div></div></div> <div><div><div></div></div></div> <div><div><div></div></div></div> <div><div><div></div></div></div> <div><div><div></div></div></div> <div><div><div></div></div></div> <div><div><div></div></div></div> <div><div><div></div></div></div> <div><div><div></div></div></div> <div><div><div></div></div></div> <div><div><div></div></div></div> <div><div><div></div></div></div> <div><div><div></div></div></div> <div><div><div></div></div></div> <div><div><div></div></div></div> <div><div><div></div></div></div> <div><div><div></div></div></div> <div><div><div></div></div></div> <div><div><div></div></div></div> <div><div><div></div></div></div> <div><div><div></div></div></div> <div><div><div></div></div></div> <div><div><div></div></div></div> <div><div><div></div></div></div> <div><div><div></div></div></div> <div><div><div></div></div></div> <div><div><div></div></div></div> <div><div><div></div></div></div> <div><div><div></div></div></div> <div><div><div></div></div></div> <div><div><div></div></div></div> <div><div><div></div></div></div> <div><div><div></div></div></div> <div><div><div></div></div></div> <div><div><div></div></div></div> <div><div><div></div></div></div> <div><div><div></div></div></div> <div><div><div></div></div></div> <div><div><div></div></div></div> <div><div><div></div></div></div> <div><div><div></div></div></div> <div><div><div></div></div></div> <div><div><div></div></div></div> <div><div><div></div></div></div> <div><div><div></div></div></div> <div><div><div></div></div></div> <div><div><div></div></div></div> <div><div><div></div></div></div> <div><div><div></div></div></div> <div><div><div></div></div></div> <div><div><div></div></div></div> <div><div><div></div></div></div> <div><div><div></div></div></div> <div><div><div></div></div></div> <div><div><div></div></div></div> <div><div><div></div></div></div> <div><div><div></div></div></div> <div><div><div></div></div></div> <div><div><div></div></div></div> <div><div><div></div></div></div> <div><div><div></div></div></div> <div><div><div></div></div></div> <div><div><div></div></div></div> <div><div><div></div></div></div> <div><div><div></div></div></div> <div><div><div></div></div></div> <div><div><div></div></div></div> <div><div><div></div></div></div> <div><div><div></div></div></div> <div><div><div></div></div></div> <div><div><div></div></div></div> <div><div><div></div></div></div> <div><div><div></div></div></div> <div><div><div></div></div></div> <div><div><div></div></div></div> <div><div><div></div></div></div> <div><div><div></div></div></div> <div><div><div></div></div></div> <div><div><div></div></div></div> <div><div><div></div></div></div> <div><div><div></div></div></div> <div><div><div></div></div></div> <div><div><div></div></div></div> <div><div><div></div></div></div> <div><div><div></div></div></div> <div><div><div></div></div></div> <div><div><div></div></div></div> <div><div><div></div></div></div> <div><div><div></div></div></div> <div><div><div></div></div></div> <div><div><div></div></div></div> <div><div><div></div></div></div> <div><div><div></div></div></div> <div><div><div></div></div></div> <div><div><div></div></div></div> <div><div><div></div></div></div> <div><div><div></div></div></div> <div><div><div></div></div></div> <div><div><div></div></div></div> <div><div><div></div></div></div> <div><div><div></div></div></div> <div><div><div></div></div></div> <div><div><div></div></div></div> <div><div><div></div></div></div> <div><div><div></div></div></div> <div><div><div></div></div></div> <div><div><div></div></div></div> <div><div><div></div></div></div> <div><div><div></div></div></div> <div><div><div></div></div></div> <div><div><div></div></div></div> <div><div><div></div></div></div> <div><div><div></div></div></div> <div><div><div></div></div></div> <div><div><div></div></div></div> <div><div><div></div></div></div> <div><div><div></div></div></div> <div><div><div></div></div></div> <div><div><div></div></div></div> <div><div><div></div></div></div> <div><div><div></div></div></div> <div><div><div></div></div></div> <div><div><div></div></div></div> <div><div><div></div></div></div> <div><div><div></div></div></div> <div><div><div></div></div></div> <div><div><div></div></div></div> <div><div><div></div></div></div> <div><div><div></div></div></div> <div><div><div></div></div></div> <div><div><div></div></div></div> <div><div><div></div></div></div> <div><div><div></div></div></div> <div><div><div></div></div></div> <div><div><div></div></div></div> <div><div><div></div></div></div> <div><div><div></div></div></div> <div><div><div></div></div></div> <div><div><div></div></div></div> <div><div><div></div></div></div> <div><div><div></div></div></div> <div><div><div></div></div></div> <div><div><div></div></div></div> <div><div><div></div></div></div> <div><div><div></div></div></div> <div><div><div></div></div></div> <div><div><div></div></div></div> <div><div><div></div></div></div> <div><div><div></div></div></div> <div><div><div></div></div></div> <div><div><div></div></div></div> <div><div><div></div></div></div> <div><div><div></div></div></div> <div><div><div></div></div></div> <div><div><div></div></div></div> <div><div><div></div></div></div> <div><div><div></div></div></div> <div><div><div></div></div></div> <div><div><div></div></div></div> <div><div><div></div></div></div> <div><div><div></div></div></div> <div><div><div></div></div></div> <div><div><div></div></div></div> <div><div><div></div></div></div> <div><div><div></div></div></div> <div><div><div></div></div></div> <div><div><div></div></div></div> <div><div><div></div></div></div> <div><div><div></div></div></div> <div><div><div></div></div></div> <div><div><div></div></div></div> <div><div><div></div></div></div> <div><div><div></div></div></div> <div><div><div></div></div></div> <div><div><div></div></div></div> <div><div><div></div></div></div> <div><div><div></div></div></div> <div><div><div></div></div></div> <div><div><div></div></div></div> <div><div><div></div></div></div> <div><div><div></div></div></div> <div><div><div></div></div></div> <div><div><div></div></div></div> <div><div><div></div></div></div> <div><div><div></div></div></div> <div><div><div></div></div></div> <div><div><div></div></div></div> <div><div><div></div></div></div> <div><div><div></div></div></div> <div><div><div></div></div></div> <div><div><div></div></div></div> <div><div><div></div></div></div> <div><div><div></div></div></div> <div><div><div></div></div></div> <div><div><div></div></div></div> <div><div><div></div></div></div> <div><div><div></div></div></div> <div><div><div></div></div></div> <div><div><div></div></div></div> <div><div><div></div></div></div> <div><div><div></div></div></div> <div><div><div></div></div></div> <div><div><div></div></div></div> <div><div><div></div></div></div> <div><div><div></div></div></div> <div><div><div></div></div></div> <div><div><div></div></div></div> <div><div><div></div></div></div> <div><div><div></div></div></div> <div><div><div></div></div></div> <div><div><div></div></div></div> <div><div><div></div></div></div> <div><div><div></div></div></div> <div><div><div></div></div></div> <div><div><div></div></div></div> <div><div><div></div></div></div> <div><div><div></div></div></div> <div><div><div></div></div></div> <div><div><div></div></div></div> <div><div><div></div></div></div> <div><div><div></div></div></div> <div><div><div></div></div></div> <div><div><div></div></div></div> <div><div><div></div></div></div> <div><div><div></div></div></div> <div><div><div></div></div></div> <div><div><div></div></div></div> <div><div><div></div></div></div> <div><div><div></div></div></div> <div><div><div></div></div></div> <div><div><div></div></div></div> <div><div><div></div></div></div> <div><div><div></div></div></div> <div><div><div></div></div></div> <div><div><div></div></div></div> <div><div><div></div></div></div> <div><div><div></div></div></div> <div><div><div></div></div></div> <div><div><div></div></div></div> <div><div><div></div></div></div> <div><div><div></div></div></div> <div><div><div></div></div></div> <div><div><div></div></div></div> <div><div><div></div></div></div> <div><div><div></div></div></div> <div><div><div></div></div></div> <div><div><div></div></div></div> <div><div><div></div></div></div> <div><div><div></div></div></div> <div><div><div></div></div></div> <div><div><div></div></div></div> <div><div><div></div></div></div> <div><div><div></div></div></div> <div><div><div></div></div></div> <div><div><div></div></div></div> <div><div><div></div></div></div> <div><div><div></div></div></div> <div><div><div></div></div></div> <div><div><div></div></div></div> <div><div><div></div></div></div> <div><div><div></div></div></div> <div><div><div></div></div></div> <div><div><div></div></div></div> <div><div><div></div></div></div> <div><div><div></div></div></div> <div><div><div></div></div></div> <div><div><div></div></div></div> <div><div><div></div></div></div> <div><div><div></div></div></div> <div><div><div></div></div></div> <div><div><div></div></div></div> <div><div><div></div></div></div> <div><div><div></div></div></div> <div><div><div></div></div></div> <div><div><div></div></div></div> <div><div><div></div></div></div> <div><div><div></div></div></div> <div><div><div></div></div></div> <div><div><div></div></div></div> <div><div><div></div></div></div> <div><div><div></div>&lt;/</div></div>
----------	--	-------	-----------	--

CONCRETE NOTES:

1. UNLESS NOTED OTHERWISE, ALL FOOTINGS TO BE FOUNDED 200mm INTO NATURAL GROUND OR CERTIFIED FILL.
2. UNLESS NOTED OTHERWISE, CONCRETE TO BE **25MPa, 40mm COVER**.
3. CONCRETE COVER TO BE MAINTAINED BY THE USE OF APPROVED CHAIRS AND/OR CONCRETE BLOCKS SPREAD AT APPROXIMATELY 600mm CROSS CENTRES.
4. CONSTRUCTION JOINTS WHERE NOT SHOWN SHALL BE LOCATED TO THE APPROVAL OF THE ENGINEER.
5. NO HOLES OR CHASES OTHER THAN THOSE SHOWN ON THE STRUCTURAL DRAWINGS SHALL BE MADE IN CONCRETE MEMBERS WITHOUT THE PRIOR APPROVAL OF THE ENGINEER.
6. ALL CONCRETE SURFACES ARE TO BE CURED BY AN APPROVED METHOD FOR SEVEN DAYS IMMEDIATELY AFTER CONCRETE IS PLACED.
7. ALL CONCRETE TO BE MECHANICALLY VIBRATED DURING PLACEMENT.
8. ALL WORKMANSHIP AND MATERIALS SHALL BE IN ACCORDANCE WITH CURRENT RELATIVE CODES IN PARTICULAR *AS3600 CONCRETE STRUCTURES*.
9. REINFORCEMENT LAPS TO BE AS FOLLOWS:

- FABRIC: 2 CROSS WIRES + 25mm

- TRENCH MESH: 450mm

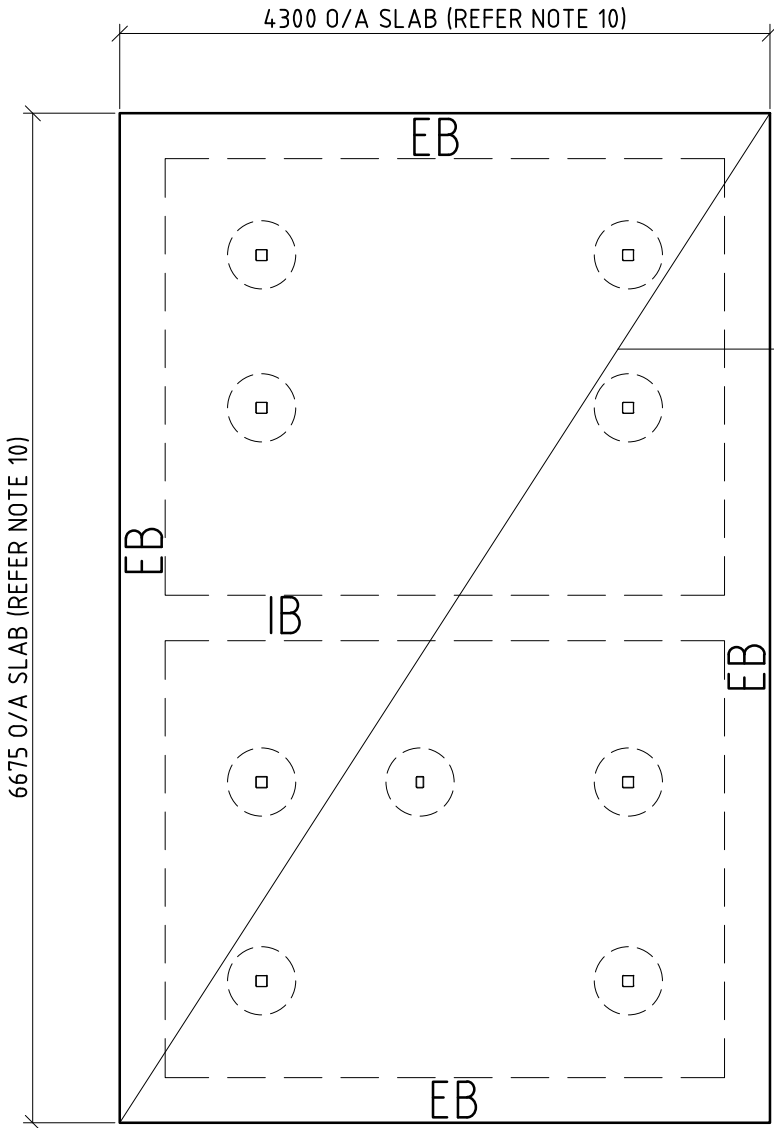
- N12 BAR: 500mm

- N16 BAR: 600mm

- N20 BAR: 800mm

- N24 BAR: 1000mm
10. SLAB DIMENSIONS SHOWN ARE TO **500mm** PAST ROOF LINE OF BUILDING. CLIENT TO DETERMINE FINAL DIMENSIONS.

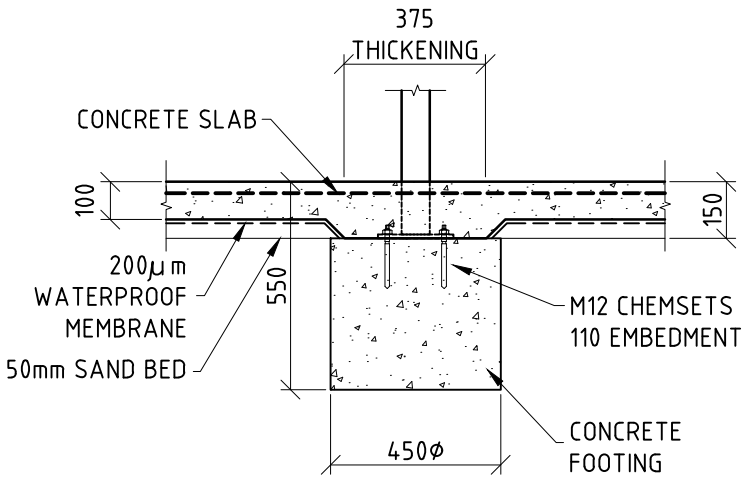
ALL DIMENSIONS IN MILLIMETRES - DO NOT SCALE



100 THK CONCRETE SLAB REINFORCED WITH 1-LAYER SL72 MESH. LAID ON 50 BEDDING SAND AND 200µm WATERPROOF MEMBRANE. FALL 1:100 (MIN).

SLAB LAYOUT

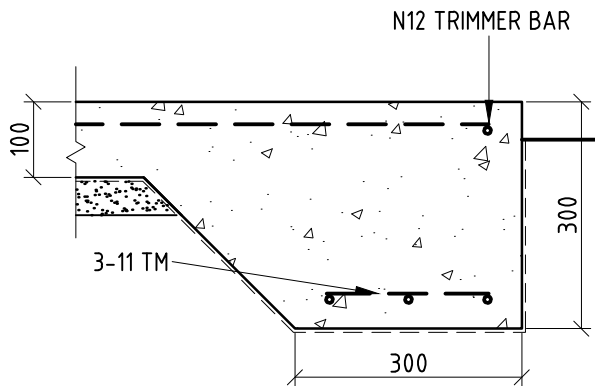
SCALE 1:50



FOOTING DETAIL

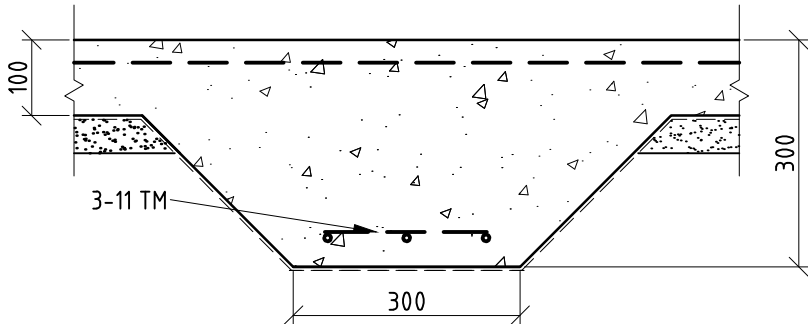
SCALE 1:20

FINISHED SLAB LEVEL - ASSUMED 0.00  
PL - PAD LEVEL




EB - EDGE BEAM DETAIL

SCALE 1:10



IB - INTERNAL BEAM DETAIL

SCALE 1:10

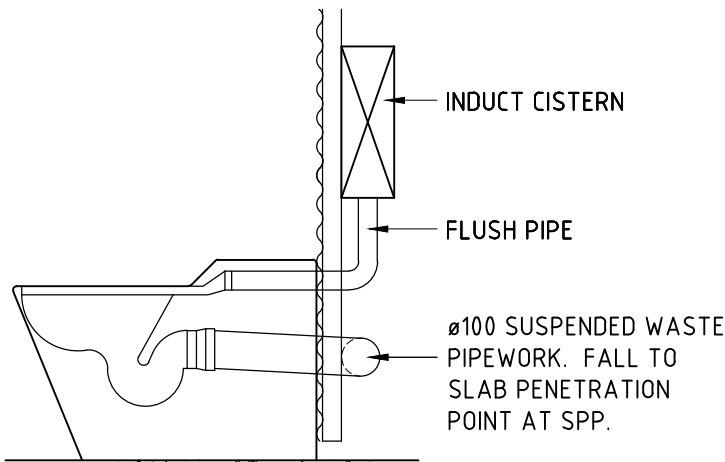
REVISION		DATE:	DRAWN BY.	<div>© LANDMARK PRODUCTS PTY. LTD.</div> <div>THIS DOCUMENT IS AND SHALL REMAIN THE PROPERTY OF LANDMARK PRODUCTS LIMITED. UNAUTHORISED USE OF THIS DOCUMENT IN ANY FORM IS PROHIBITED.</div>	<div> <b>Landmark</b> open space structures &amp; solutions</div> <div>Landmark Products Pty. Ltd. PH: 1300 768 230 A.B.N. 99 112 000 843 4/27 Lear Jet Drive, Caboolture P.O. Box 1635, Caboolture Queensland 4510 www.landmarkpro.com.au landmark@landmarkpro.com.au</div>	CLIENT NAME		PROJECT No.	PAGE
6						BANANA SHIRE COUNCIL		46860	A3
5						PROJECT		DATE:	DRAWN
4						47 PRAIRIE ST, BILOELA, QLD. 4715 (LOT PLAN: 1SP252847)		27/06/22	JEO
3						MOD K9501 "CARETAKER" 1D (SKILLION) RESTROOM		DRAWING No.	SCALE
2						DRAWING TITLE		46860-1	AS NTD
1				CHECKED BY:	DATE:	BA - SLAB PLAN		SHEET No.	REV.
								202	0

PLUMBING & DRAINAGE NOTES

1. THE WHOLE OF THE PLUMBING AND DRAINAGE WORKS SHALL BE INSTALLED IN ACCORDANCE WITH THE CURRENT NATIONAL CONSTRUCTION CODE ( PLUMBING CODE OF AUSTRALIA ) AND THE CURRENT PLUMBING AND DRAINAGE CODE A.S. 3500. THESE DRAWINGS ARE A GUIDE ONLY TO THE POSITION, LAYOUT AND SIZING OF THE SERVICE PIPES.
2. THE CONTRACTOR SHALL LOCATE ALL SERVICES AND CONFIRM CONNECTIONS CAN BE ACHIEVED PRIOR TO COMMENCEMENT OF WORK.
3. ALL UNDER SLAB & WALL CAVITY WATER SERVICES TO BE CLASS 'B' COPPER, BE PRE-LAGGED AND 55% OVERWRAPPED WITH 'DENSO' TAPE AND TO BE TYPE 'B' IN ACCORDANCE WITH A.S. 1432.
4. ALL EXTERNAL H.C.'s TO BE BRASS AND INSTALLED WITH A VACUUM BREAKER.
5. ANY HOSE COCKS INSTALLED ADJACENT TO URINALS TO BE FITTED WITH A SHROUD & BACKFLOW PREVENTION DEVICE.
6. ALL INTERNAL COLD WATER TO BE COPPER.
7. ALL UNDERSLAB PIPES TO BE  $\varnothing 100\text{mm}$ , GRADED AT 1:40 U.N.O.
8. ALL VENT PIPES SHALL TERMINATE ABOVE THE ROOF LEVEL IN ACCORDANCE WITH BY-LAW 111.
9. ALL INSPECTION OPENINGS AT SURFACE TO BE CAPPED AND COVERED WITH AN APPROVED REMOVABLE COVER.

GENERAL SANITARY NOTES

1. THE ACCURACY AND COMPLETENESS OF EXISTING SERVICE INFORMATION IS NOT GUARANTEED. IT IS THE CONTRACTOR'S RESPONSIBILITY TO LOCATE ALL SERVICES PRIOR TO CONSTRUCTION AND ADVISE THE SUPERINTENDANT OF ANY DIFFERENCES FROM THE DRAWINGS.
2. WHERE A JUNCTION IS TO BE MADE TO EXISTING CONSTRUCTION, THE CONTRACTOR IS TO CONFIRM THE LOCATION AND LEVEL OF THIS CONSTRUCTION PRIOR TO COMMENCING WORK ON ANY CRITICAL SECTIONS. THE SUPERINTENDENT MAY VARY LEVELS AND GRADIENTS TO ACHIEVE A SATISFACTORY CONNECTION.



PAN CONNECTION DETAIL

SCALE 1:20

ALL DIMENSIONS IN MILLIMETRES - DO NOT SCALE

DRAINAGE PLAN No.

TITLE

.

( FREEHOLD / COMMUNITY TITLE )

PROJECT DETAILS:

PROPERTY OWNER: -  
PROPERTY ADDRESS: -  
RP DESCRIPTION: -

THIS DRAWING HAS BEEN PREPARED IN ACCORDANCE WITH AS/NZS 3500.2.1 & 2.2 2003.  
LANDMARK INSTALLATIONS PTY. LTD. ABN 26 129 595 044 ( B.S.A LICENSE No 1135451 )

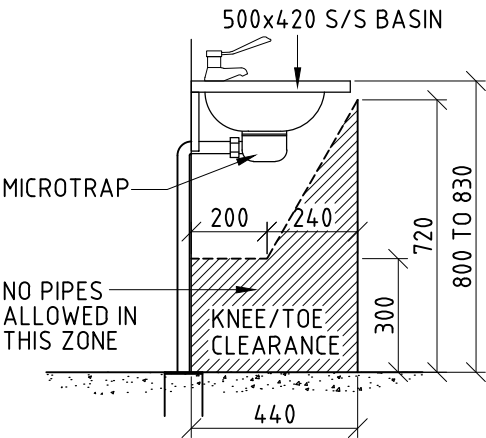
REVISION		DATE:	DRAWN BY.	<div>© LANDMARK PRODUCTS PTY. LTD.</div> <div>THIS DOCUMENT IS AND SHALL REMAIN THE PROPERTY OF LANDMARK PRODUCTS LIMITED.</div> <div>UNAUTHORISED USE OF THIS DOCUMENT IN ANY FORM IS PROHIBITED.</div>	<div><div><div><div></div></div><div>Landmark</div><div>open space structures &amp; solutions</div></div><div><div>Landmark Products Pty. Ltd.<div>PH: 1300 768 230</div></div><div>A.B.N. 99 112 000 843</div><div>4/27 Lear Jet Drive, Caboolture</div><div>P.O. Box 1635, Caboolture<div>www.landmarkpro.com.au</div></div><div>Queensland 4510<div>landmark@landmarkpro.com.au</div></div></div></div>	CLIENT NAME	PROJECT No.	PAGE
6						BANANA SHIRE COUNCIL	46860	A3
5						PROJECT	DATE:	DRAWN
4						47 PRAIRIE ST, BILOELA, QLD. 4715 (LOT PLAN: 1SP252847)	27/06/22	JEO
3						MOD K9501 "CARETAKER" 1D (SKILLION) RESTROOM	DRAWING No.	SCALE
2						DRAWING TITLE	46860-1	AS NTD
1				CHECKED BY:	DATE:	SHEET No.	REV.	
						BA - HYDRAULIC LAYOUT	301	0

LEGEND

COS	CLEANOUT TO SURFACE
CV	CHECK VALVE
HB	HAND BASIN
HBP	HAND BASIN WITH "P" TRAP
HC	HOSE COCK
IO	INSPECTION OPENING
IOS	INSPECTION OPENING TO SURFACE
ORG	OVERFLOW RELIEF GULLY
PRV	500 KPa PRESSURE REDUCTION VALVE
SPP	SLAB PENETRATION POINT
V50	VENT 50
WC	TOILET
100 uPVC	PROPOSED SEWER (IN GROUND)
100 uPVC	PROPOSED SEWER (SUSPENDED)
20	PROPOSED WATER SUPPLY

NOTE : ALL PLUMBING  
INDICATED IS FOR GUIDANCE  
PURPOSES ONLY

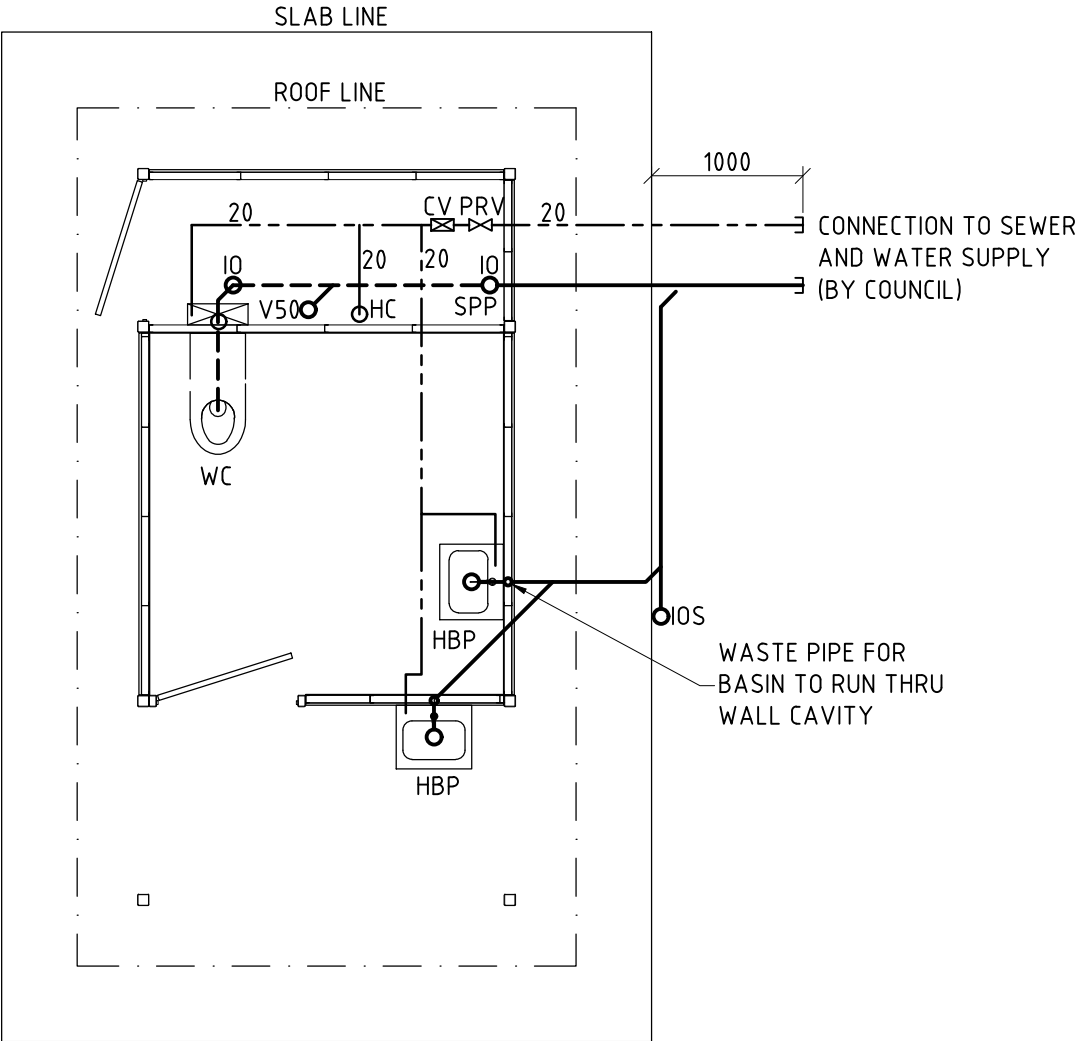
NOTE: NO JOINS PERMITTED IN  
WATER SERVICE UNDER SLAB



MICROTRAP DETAIL  
SCALE 1:20

ALL DIMENSIONS IN MILLIMETRES - DO NOT SCALE

NOTE: THE BELOW LAYOUT IS INDICATIVE ONLY, AND DOES NOT  
CONSTITUTE A HYDRAULIC DESIGN.  
A HYDRAULIC DESIGN (IF REQ'D) TO BE COMPLETED BY OTHERS.  
NOTE: SITE IS A H CLASS SITE.



PLAN-HYDRAULIC LAYOUT  
SCALE 1:50

PROJECT DETAILS:

PROPERTY OWNER: -  
PROPERTY ADDRESS: -  
RP DESCRIPTION: -

THIS DRAWING HAS BEEN PREPARED IN ACCORDANCE WITH AS/NZS 3500.2.1 & 2.2 2003.  
LANDMARK INSTALLATIONS PTY. LTD. ABN 26 129 595 044 (B.S.A LICENSE No 1135451)

REVISION	DATE:	DRAWN BY.	<div>© LANDMARK PRODUCTS PTY. LTD.</div> <div>THIS DOCUMENT IS AND SHALL REMAIN THE PROPERTY OF LANDMARK PRODUCTS LIMITED. UNAUTHORISED USE OF THIS DOCUMENT IN ANY FORM IS PROHIBITED.</div> <div>Landmark</div> <div>open space structures &amp; solutions</div> <div>Landmark Products Pty. Ltd. PH: 1300 768 230</div> <div>A.B.N. 99 112 000 843</div> <div>4/27 Lear Jet Drive, Caboolture</div> <div>P.O. Box 1635, Caboolture Queensland 4510</div> <div>www.landmarkpro.com.au</div> <div>landmark@landmarkpro.com.au</div>	CLIENT NAME	PROJECT No.	PAGE
6				BANANA SHIRE COUNCIL	46860	A3
5				PROJECT	DATE:	DRAWN
4				47 PRAIRIE ST, BILOELA, QLD. 4715 (LOT PLAN: 1SP252847)	27/06/22	JEO
3				MOD K9501 "CARETAKER" 1D (SKILLION) RESTROOM	DRAWING No.	SCALE
2				DRAWING TITLE	46860-1	AS NTD
1			CHECKED BY:	BA - HYDRAULIC LAYOUT	SHEET No.	REV.
			DATE:		302	0