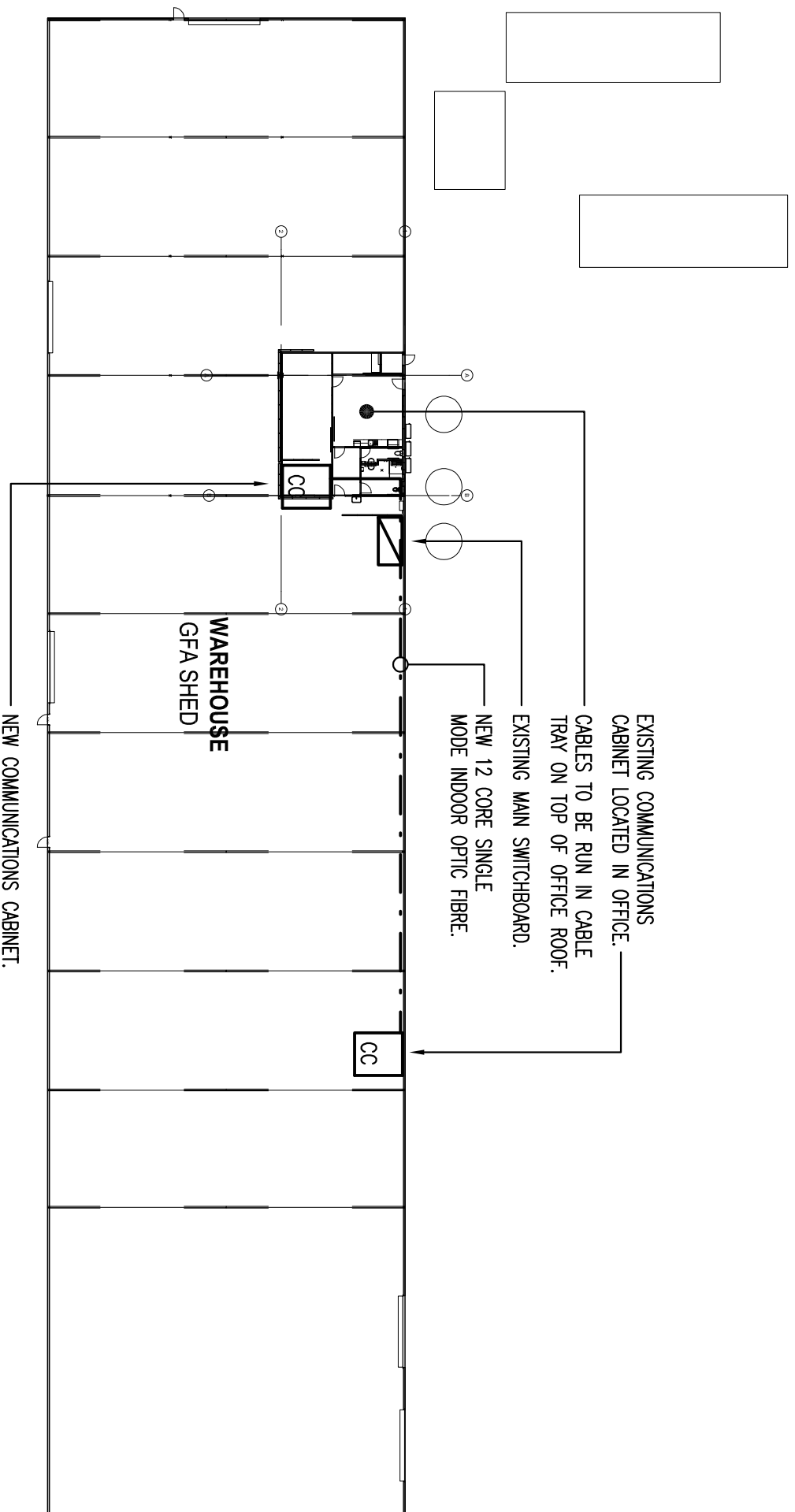
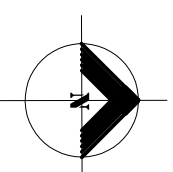


GENERAL NOTES:
 © Copyright, Anderson Consulting Engineers Pty. Ltd. Do not scale from this drawing. Take measurements on site prior to commencing work.



SITE PLAN
 SCALE - 1:500



Client:

ANDERSON
 CONSULTING ENGINEERS

43 Denison Street, Rockhampton, Q. 4700
 P.O. Box 27, Rockhampton, Q. 4700
 Phone: (07) 4927 2077
 Email: admin@andersonce.com.au
 ACN: 112 066 529 ABN: 98 112 066 529

A3

Project:

25-31 DUNN ST,
BILOELA

Title:

ELECTRICAL SERVICES
 SITE PLAN, FIBRE RUN.

Drawing No:

22214-E001

Rev:

A

Drawn: VM/C

Designed: G.A.

Scale: 1:500

Approved: G.A.

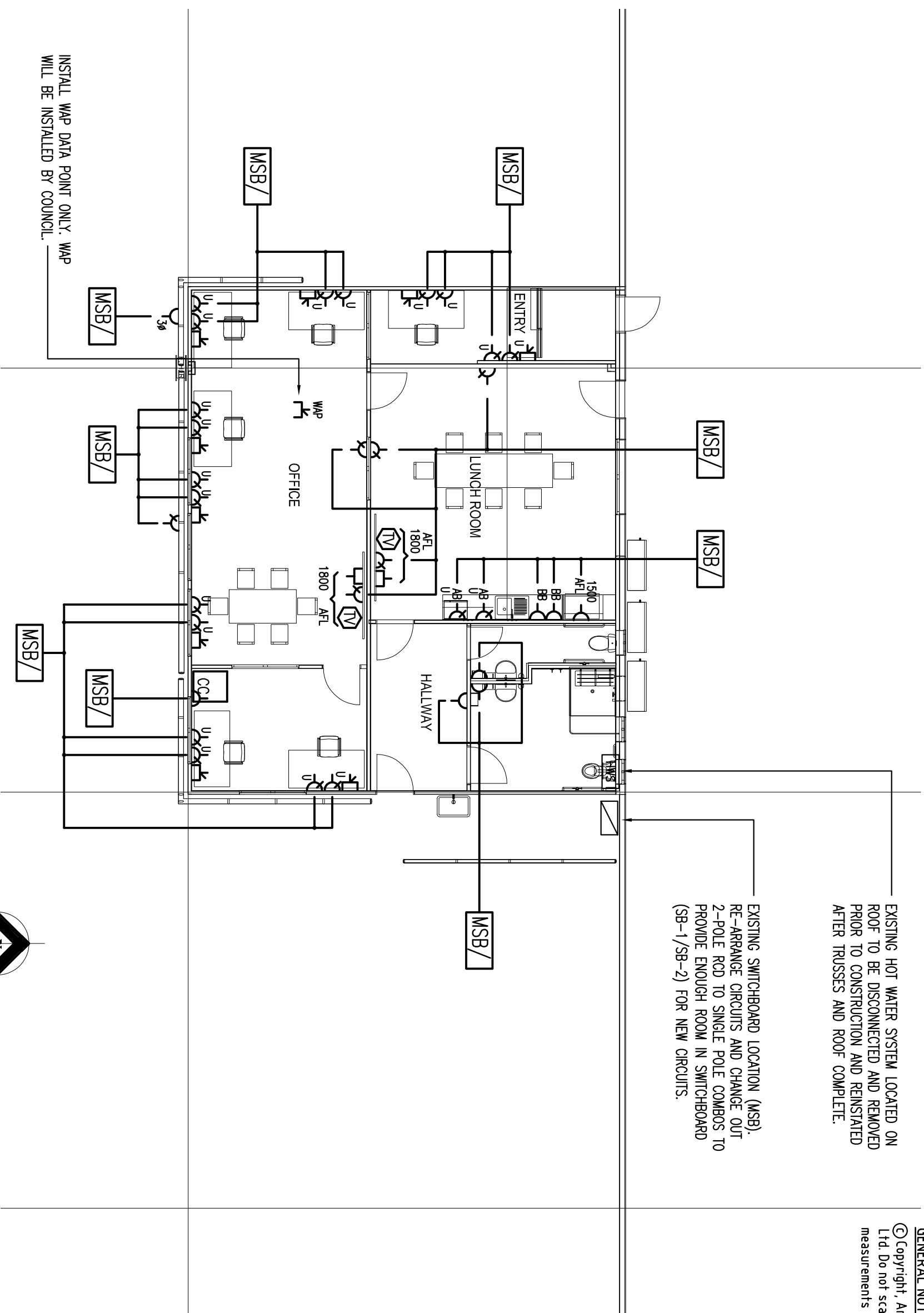
Date: NOV 2022

No: 1 Of: 4

EXISTING HOT WATER SYSTEM LOCATED ON ROOF TO BE DISCONNECTED AND REMOVED PRIOR TO CONSTRUCTION AND REINSTATED AFTER TRUSSES AND ROOF COMPLETE.

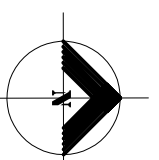
EXISTING SWITCHBOARD LOCATION (MSB). RE-ARRANGE CIRCUITS AND CHANGE OUT 2-POLE RCD TO SINGLE POLE COMBOS TO PROVIDE ENOUGH ROOM IN SWITCHBOARD (SB-1/SB-2) FOR NEW CIRCUITS.

GENERAL NOTES:
 © Copyright, Anderson Consulting Engineers Pty. Ltd. Do not scale from this drawing. Take measurements on site prior to commencing work.



INSTALL WAP DATA POINT ONLY. WAP WILL BE INSTALLED BY COUNCIL.

GROUND FLOOR PLAN – POWER & COMMUNICATIONS
 SCALE – 1:100



Client: A3	<p>ANDERSON CONSULTING ENGINEERS</p> <p>25-31 DUNN ST, BILOELA</p>	Project: ELECTRICAL SERVICES GROUND FLOOR PLAN. POWER & COMMUNICATIONS.
43 Denison Street, Rockhampton, Q. 4700 P.O. Box 27, Rockhampton, Q. 4700 Phone: (07) 4927 2077 Email: admin@andersone.com.au ACK: 112 066 529 ABN: 98 112 066 529		Drawing No: 22214-E002 Rev: A Drawn: VMC Designed: G.A. Scale: 1:100 Approved: G.A. Date: NOV 2022 No: 2 Of: 4

LUMINAIRE SCHEDULE

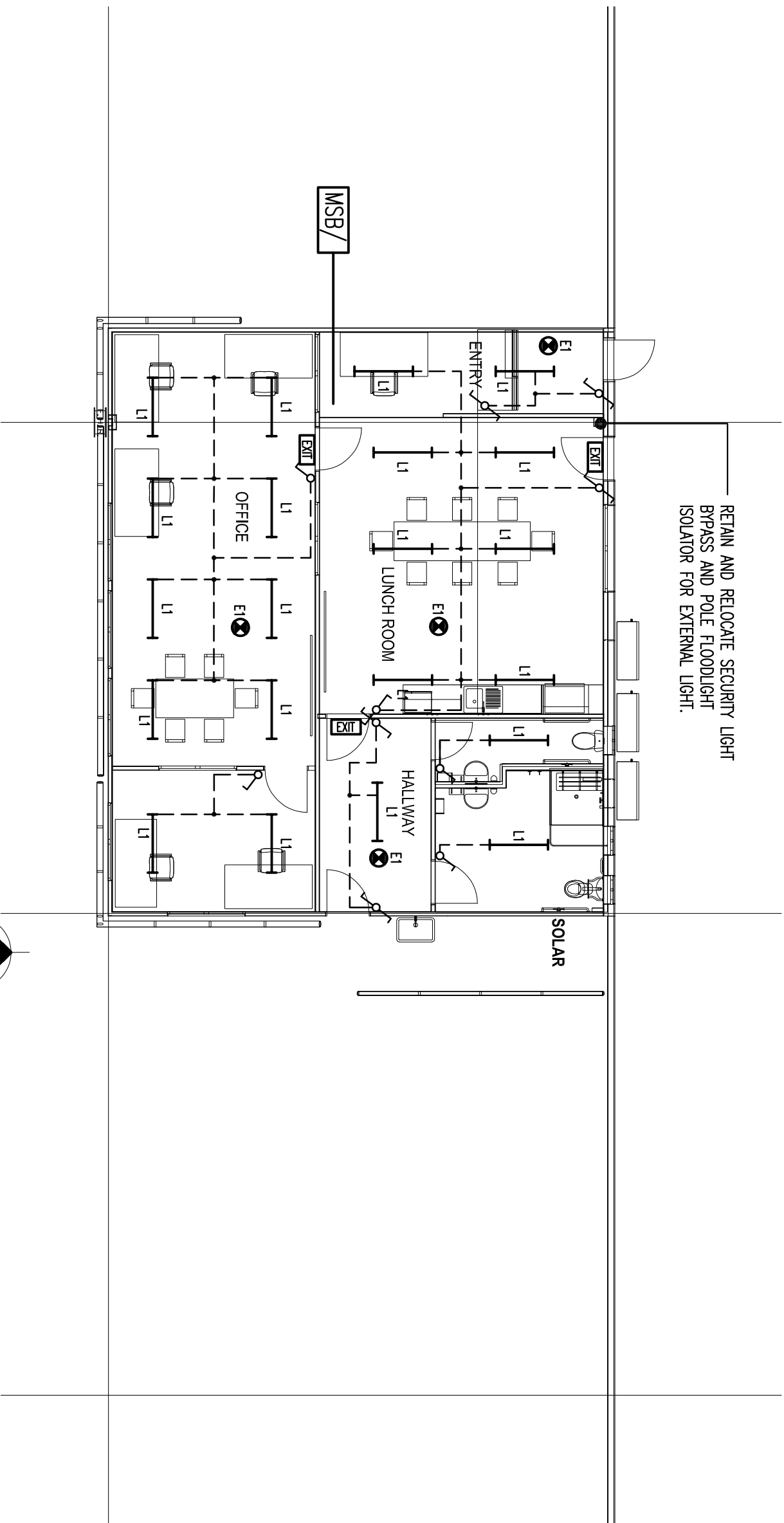
LUMINAIRE DESCRIPTION

NOMINATION ON DRAWING	WATTAGES AND OUTPUTS (LUMENS)	LUMINAIRE DESCRIPTION	DIMMABLE: YES/NO
L1	22W (2781 lumens)	1200mm LONG SURFACE MOUNTED LED BATTEN. IP44, 4000K. THORN COLLEGE BATTEN.	N
E1	-	RECESSED NON-MAINTAINED EMERGENCY LUMINAIRE. CLEVERTRONICS, CLIFE PRO D40 WITH LED LAMP AND LITHIUM ION PHOSPHATE BATTERIES.	N
EXIT	-	MAINTAINED EXIT LIGHT WITH PICTOGRAPH SIGNAGE. CLEVERTRONICS, CLIFE PRO, CLEVERTFT WITH LED LAMP AND LITHIUM ION PHOSPHATE BATTERIES.	N

GENERAL NOTES:

© Copyright, Anderson Consulting Engineers Pty. Ltd. Do not scale from this drawing. Take measurements on site prior to commencing work.

RETAIN AND RELOCATE SECURITY LIGHT
BYPASS AND POLE FLOODLIGHT
ISOLATOR FOR EXTERNAL LIGHT.



GROUND FLOOR PLAN – LIGHTING
SCALE – 1:100

Client:

A3

ANDERSON
CONSULTING ENGINEERS

4/3 Denison Street, Rockhampton, Q. 4700
P.O. Box 27, Rockhampton, Q. 4700
Phone: (07) 4927 2077
Email: admin@andersonce.com.au
ACN: 112 066 529 ABN: 98 112 066 529

Project:

25-31 DUNN ST,
BILOELA

Title:

ELECTRICAL SERVICES
GROUND FLOOR PLAN.
LIGHTING. LUMINAIRE SCHEDULE.

Drawing No:

22214-E003

Rev:

A

Drawn: VMC

Designed: G.A.

Scale: 1:100

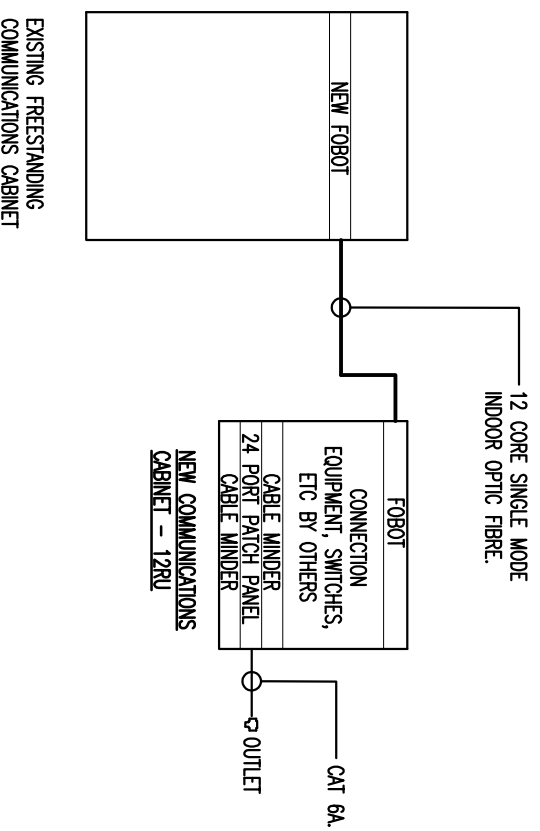
Approved: G.A.

Date: NOV 2022

No: 3

Of: 4

GENERAL NOTES:
 © Copyright, Anderson Consulting Engineers Pty. Ltd. Do not scale from this drawing. Take measurements on site prior to commencing work.



COMMUNICATIONS SCHEMATIC
 NOT TO SCALE

- SINGLE GENERAL POWER OUTLET
- DOUBLE GENERAL POWER OUTLET
- DOUBLE GENERAL POWER OUTLET WITH SINGLE USB OUTLET
- DOUBLE COMMUNICATION OUTLET
- WIRELESS ACCESS POINT
- EXISTING SWITCHBOARD
- HOT WATER SYSTEM
- COMMUNICATIONS CABINET
- TV OUTLET
- ABOVE BENCH
- BELOW BENCH
- ABOVE FLOOR LEVEL
- CEILING MOUNTED
- SINGLE POLE LIGHT SWITCH
- TWO WAY LIGHT SWITCH
- SWITCHING WIRE
- EXIT SIGN
- EMERGENCY LUMINAIRE
- CIRCUITING WIRE
- CIRCUIT TAG
- INDOOR OPTIC FIBRE

LEGEND OF SYMBOLS
 NOT TO SCALE

Client: **ANDERSON CONSULTING ENGINEERS**

43 Denison Street, Rockhampton, Q. 4700
 P.O. Box 27, Rockhampton, Q. 4700
 Phone: (07) 4927 2077
 Email: admin@andersonce.com.au
 ACK: 112 066 529 ABN: 98 112 066 529

Project: **25-31 DUNN ST, BILOELA**

Title: **ELECTRICAL SERVICES**
 LEGEND OF SYMBOLS.
 COMMUNICATIONS SCHEMATIC.

Drawing No: **22214-E004** Rev: **A**

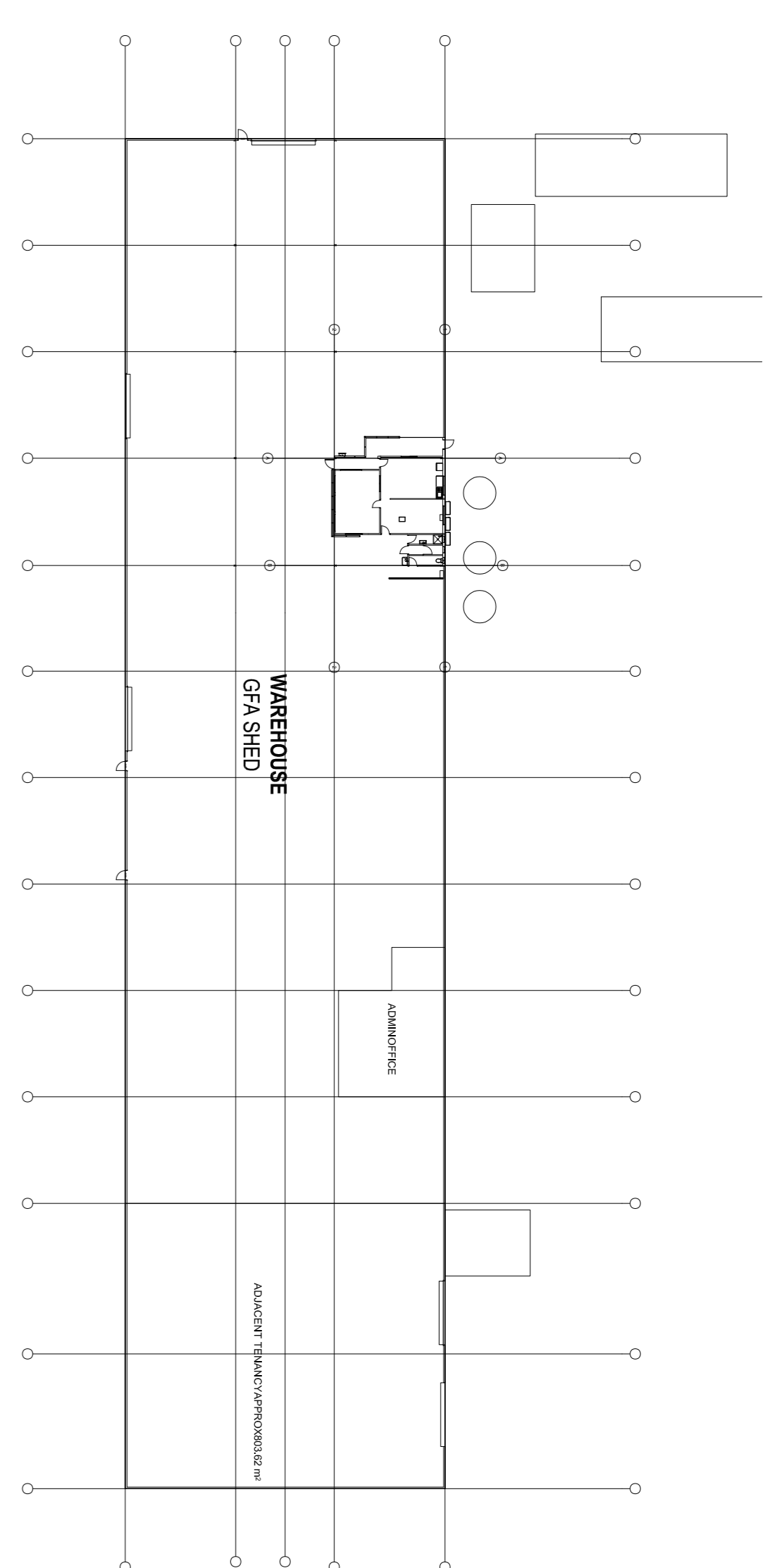
Drawn: VMC	Designed: G.A.
Scale: 1:100	Approved: G.A.
Date: NOV 2022	No. 4 Of: 4

GENERAL NOTES

- DIMENSIONS SHALL NOT BE SCALED OFF DRAWINGS
- CHECK ALL DIMENSIONS BY SITE MEASUREMENT & ARCHITECTURAL & STRUCTURAL DRAWINGS
- DUCT SIZES SHOWN ARE CLEAR, INTERNAL DIMENSIONS IN mm.
- RECTANGULAR DUCT SIZES ARE SHOWN WITH BY DEPTH ON PLAN
- ROUND DUCTS AND FLEXIBLE DIAMETERS ARE SHOWN AS Ø200 ETC. DIMENSION IN mm
- DUCTWORK HATCHED TO BE INTERNALLY INSULATED.
- ALL SUPPLY AND RETURN AIR DUCTWORK NOT INTERNALLY INSULATED TO BE EXTERNALLY INSULATED.
- PROVIDE DAMPERS AT ALL DUCTWORK JUNCTIONS
- SUPPLY AIR OUTLETS SHOWN TYPICAL
- RETURN AIR OUTLETS SHOWN TYPICAL
- REFRIG. AIR GRILLES IN DOORS SHOWN TYPICAL
- FLEXIBLE DUCTS, CUSHION HEADS AND OUTLETS SHOWN
- DUCT CONNECTIONS TO FANS AND UNITS TO BE BY FLEXIBLE CONNECTION
- FANS IN UNITS TO BE CAST TO SUIT DUCT RUNS
- ALL PENETRATIONS THROUGH EXTERNAL WALLS OR ROOF TO BE SECURELY FLASHED
- FROM UNITS TO TUNDRAGES. DRAWN TO BE INSULATED.
- AP DENOTES ACCESS PANELS, HINGED WHERE INDICATED.
- CONTROL PANEL POSITIONS SHOWN ARE NOMINAL ONLY, TO BE CHECKED WITH SUPERINTENDENT BEFORE INSTALLATION.
- 900x600 CEILING MOUNTED CASSETTE
- 600x600 CEILING MOUNTED CASSETTE
- CONDENSER UNIT

LEGEND

- CONDENSATE PIPEWORK - - - - -
- REFRIGERANT PIPEWORK - - - - -
- RUN IN CEILING SPACE - - - - -

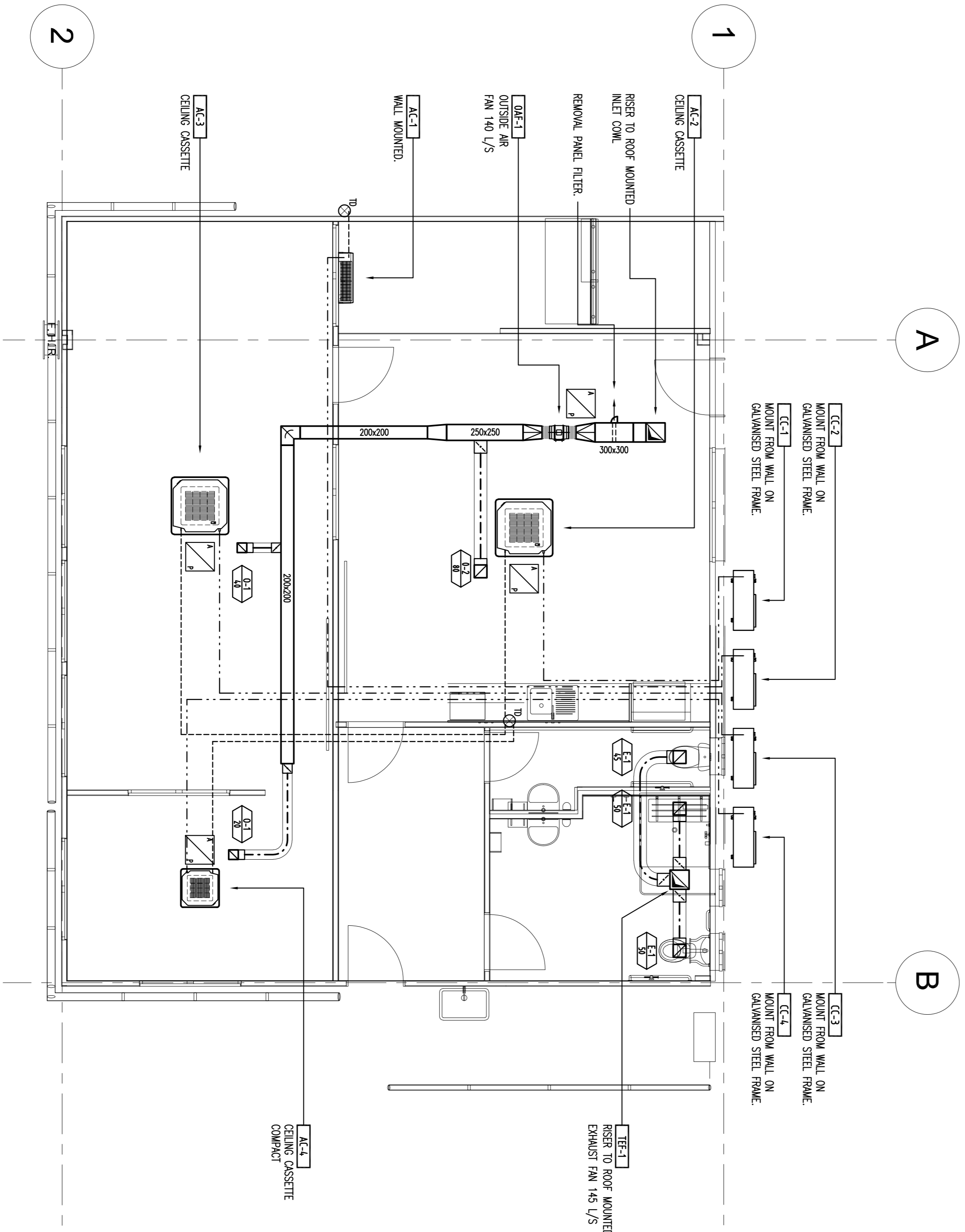


FLEX SCHEDULE

L/S	SIZE
1-40	Ø150
41-85	Ø200
86-140	Ø250
141-200	Ø300
201-270	Ø350
271-350	Ø400
351-450	Ø450
451-560	Ø500

GRILLE SCHEDULE

NO.	NECK SIZE	FACE SIZE	TYPE
0-1	150x150	-	EGGCRATE GRILLE
0-2	200x200	-	EGGCRATE GRILLE
E-1	200x200	-	EGGCRATE GRILLE



ANDERSON CONSULTING ENGINEERS
 43 Denison Street, Rockhampton, Q. 4700
 P O Box 27, Rockhampton, Q. 4700
 Phone: (07) 4271 2977
 Fax: (07) 4271 2978
 Web: www.ace-engineers.com.au
 Lic: 121966-5377 AML 98 32 166 539

BANANA SHIRE COUNCIL
 25-31 DUINN ST, BLOELA,
 OFFICE FITOUT

MECHANICAL SERVICES
 GROUND FLOOR - PART PLAN,
 AIR CONDITIONING AND
 VENTILATION LAYOUT.

Drawn by:	AS SHOWN	Approved:	DW
Design:	MRP	Design:	DW
Date:	20-12-2022	No.:	1 of 1

22214-M001

Scale: AS SHOWN

Project: BANANA SHIRE COUNCIL

Title: MECHANICAL SERVICES GROUND FLOOR - PART PLAN, AIR CONDITIONING AND VENTILATION LAYOUT.

Date: 20-12-2022

Rev: 1

App: DW

TENDER ISSUE

