



NO WORK IS SO  
IMPORTANT THAT  
IT CANNOT BE  
DONE SAFELY



## LOCALITY PLAN

The location of existing public utilities shown on these drawings is approximate only and in some cases may be inaccurate or incomplete. No responsibility is accepted for nor is any guarantee made as to the accuracy of the locations shown that have been plotted from information provided by the relevant public utility authorities. The attention of the user of these drawings is directed to the possible existence of underground public utilities and private service lines not shown or at locations different from those shown on these drawings. It is the responsibility of those persons using these drawings to confirm the existence of all public utilities and private service lines within the vicinity of the works in conjunction with the relevant public utility authority and/or by physical location.

			NOT TO SCALE	P. BARAL	T. UPRETI	 <b>Banana</b> SHIRE SHIRE OF OPPORTUNITY	 <b>BEFORE</b> <b>YOU DIG</b> www.byda.com.au	TEYS ROAD ACCESS PATH LOCALITY PLAN AND DRAWING SHEET INDEX			
				Designed G. DE SILVA	Drafted N. GARVEY						
A	ISSUE FOR CONSTRUCTION	20/03/2025									
No	Revision	Date		Scale:	Checked			Approved RPEQ 31721		<div>FOR CONSTRUCTION</div>	Dwg. No. 7940-9005-001

NO WORK IS SO  
IMPORTANT THAT  
IT CANNOT BE  
DONE SAFELY

GENERAL NOTES:

- WORKS SHALL BE UNDERTAKEN GENERALLY IN ACCORDANCE WITH THE RELEVANT CMDG CONSTRUCTION SPECIFICATIONS EXCEPT WHERE SPECIFIC DTMR SPECIFICATION REQUIREMENTS ARE DETAILED WITHIN THESE PROJECT SPECIFIC DRAWINGS. THE MOST CURRENT VERSION SHALL BE ADOPTED, UNLESS NOTED OTHERWISE.
- WORKS TO BE MEASURED IN ACCORDANCE WITH PROJECT SPECIFIC SUPPLEMENTARY SPECIFICATION FOR MEASUREMENT AND WORK OPERATIONS FOR WORK ITEMS.
- IF ANY ARCHAEOLOGICAL OR CULTURAL MATERIAL IS EXPOSED ON THE WORK SITE ALL WORKS SHALL CEASE. THE D.E.H.P., ABORIGINAL LAND COUNCIL AND B.S.C. ARE TO BE NOTIFIED.
- ALL WORKS ARE TO COMPLY WITH THE REQUIREMENTS OF THE ENVIRONMENTAL PROTECTION ACT, 1994.
- THE POSITIONS SHOWN ON DRAWINGS FOR PUBLIC UTILITIES SERVICES ARE BASED ON THE B.Y.D.A. INFORMATION SUPPLIED AT TIME OF DESIGN AND ARE INDICATIVE ONLY. PRIOR TO CONSTRUCTION THE CURRENT SERVICE AUTHORITY INFORMATION IS TO BE OBTAINED FROM B.Y.D.A. (WEBSITE: WWW.BYDA.COM.AU). THE POSITION AND DEPTH OF EACH SERVICE IS TO BE VERIFIED BY THE RELEVANT SERVICE AUTHORITY ON SITE BEFORE THE START OF ANY CONSTRUCTION.
- EXISTING SERVICES - LOCATE SERVICE PRIOR TO COMMENCING WORKS. SERVICES ARE SHOWN ON THESE DRAWINGS FOR INFORMATION ONLY. NO RESPONSIBILITY IS TAKEN FOR THE ACCURACY OR COMPLETENESS OF THE INFORMATION SUPPLIED. TAKE CARE TO PROTECT SERVICES FROM DAMAGE, AND REPORT ANY HITS OR DAMAGE TO THE SERVICE AUTHORITY IMMEDIATELY.
- WHERE THESE DRAWINGS MAKE REFERENCE TO THE ADMINISTRATOR OR CONTRACT ADMINISTRATOR IT SHALL MEAN COUNCIL'S SUPERINTENDENT MANAGING THE WORKS.
- PRIOR TO COMMENCEMENT OF WORK CONTACT THE SUPERINTENDENT IF ANY PSM'S ARE IN THE VICINITY OF THE WORK SITE.
- ORDER OF PRECEDENCE OF DOCUMENTS AMBIGUITIES OR DISCREPANCIES - THE FOLLOWING ORDER OF PRECEDENCE SHALL APPLY WHERE THERE IS ANY AMBIGUITY, DISCREPANCY OR INCONSISTENCY BETWEEN THE DESIGN DOCUMENTS COMPRISING THE CONTRACT, WITH THE HIGHER IN THE LIST HAVING A HIGHER PRIORITY.
  - THESE PROJECT SPECIFIC DRAWINGS
  - SUPPLEMENTARY SPECIFICATIONS
  - TECHNICAL SPECIFICATIONS
  - STANDARD DRAWINGSTHE SEVERAL DOCUMENTS FORMING THE CONTRACT ARE TO BE TAKEN AS MUTUALLY EXPLANATORY OF ONE ANOTHER. IF EITHER PARTY DISCOVERS ANY AMBIGUITY OR DISCREPANCY IN ANY DOCUMENT PREPARED FOR THE PURPOSE OF EXECUTING THE WORK UNDER THE CONTRACT, THAT PARTY SHALL NOTIFY THE SUPERINTENDENT IN WRITING OF THE AMBIGUITY OR DISCREPANCY AS SOON AS POSSIBLE.
- THE SCHEME DRAWINGS LISTED ON THE PROJECT COVER SHEET ARE TO BE READ AS A WHOLE AND NOT IN ISOLATION. ANY ISOLATED DRAWING SEPARATED FROM THE CONTROL SET WILL BE CONSIDERED VOIDED AND IS NOT TO BE USED.
- ALL DRAWINGS ARE TO BE READ IN CONJUNCTION WITH THE PROJECT'S SPECIFICATION AND ALL RELEVANT STANDARD DRAWINGS.
- MATERIALS AND WORKMANSHIP - WHERE MATERIALS, MATERIAL COMPONENTS, WORKMANSHIP AND PROCEDURES ARE NOT SPECIFICALLY DESCRIBED BY THE CONTRACT, THEY SHALL BE IN ACCORDANCE WITH THE RELEVANT AUSTRALIAN STANDARD. WHERE NO AUSTRALIAN STANDARD IS AVAILABLE, OTHER SPECIFICATIONS SHALL BE USED IN THE FOLLOWING ORDER OF PRIORITY:
  - MANUFACTURER'S RECOMMENDATIONS, AND
  - ACCEPTED INDUSTRY STANDARDS.AT A MINIMUM MATERIALS AND WORKMANSHIP SHALL BE THE BEST OF THEIR RESPECTIVE KINDS AND FIT FOR THE PURPOSE FOR WHICH THEY ARE INTENDED. ANY PRODUCT TRADE NAMES HAVE BEEN USED TO ESTABLISH A QUALITY REQUIREMENT. WRITTEN APPROVAL TO BE OBTAINED PRIOR TO USING ANY SUBSTITUTIONS.
- DIMENSIONS/LEVELS - ALL LEVELS AND SETOUT POINTS SHALL BE CONFIRMED ON SITE BY A REGISTERED SURVEYOR PRIOR TO CONSTRUCTION. THE CONTRACTOR SHALL SEEK CLARIFICATION FROM THE COUNCIL'S SUPERINTENDENT FOR ANY DISCREPANCY PRIOR TO PROCEEDING WITH WORKS. DIMENSIONS SHALL NOT BE SCALED FROM DRAWINGS.
- SET OUT OF INDIVIDUAL INSTALLATIONS - THE CONTRACTOR SHALL SET OUT THE WORKS AS SHOWN ON THE DRAWINGS IN SUFFICIENT DETAIL TO IDENTIFY THE LOCATION, LENGTH AND LEVELS OF THE PROPOSED INSTALLATION. ONCE THE INITIAL SET OUT IS COMPLETE THE SUPERINTENDENT WILL DETERMINE THE DESIGN APPROPRIATENESS OF THE SET OUT WITH REGARD TO THE ACTUAL SITE CONDITIONS. COUNCIL'S SUPERINTENDENT MAY DIRECT AMENDMENTS TO THE SET-OUT DETAILS. PAYMENT FOR SUCH AMENDMENTS WILL BE MADE AT APPROPRIATE RATES IN THE SCHEDULE OF RATES OR, WHERE SUCH RATES ARE NOT DEEMED BY COUNCIL'S SUPERINTENDENT TO BE APPROPRIATE, AS DETERMINED BY COUNCIL'S SUPERINTENDENT. INSTALLATIONS TO BE SET OUT IN ACCORDANCE WITH THE ABOVE REQUIREMENTS INCLUDE:
  - DRAINAGE PIPES, CULVERTS, SLABS AND STRUCTURES
  - LANDSCAPING
  - TRAFFIC CONTROL

EARTHWORK NOTES:

- ALL UNSUITABLE MATERIAL IS TO BE STRIPPED PRIOR TO PLACEMENT OF STRUCTURAL FILL.
- ALL UNSUITABLE MATERIAL IS TO BE REMOVED IN ACCORDANCE WITH THE SPECIFICATION OR AS DIRECTED BY COUNCIL'S SUPERINTENDENT.
- EARTHWORK QUANTITIES INCLUDE UNSUITABLE AND OR CONTAMINATED MATERIAL EXCEPT WHERE NOTED OTHERWISE.
- ALL CONTAMINATED SOIL TO BE REMOVED IN ACCORDANCE WITH THE SPECIFICATION OR AS DIRECTED BY COUNCIL'S SUPERINTENDENT.
- EARTHWORK QUANTITIES INCLUDE EXISTING ROAD PAVEMENT EXCAVATED WHERE APPLICABLE.
- EARTHWORK QUANTITIES IN CUT ARE BANK (NETT) VOLUMES AND IN FILL ARE COMPACTED VOLUMES.
- CLASS A1 OR B MATERIAL TO COMPLY WITH THE REQUIREMENTS OF TMR MRTS04, AND SPECIFIC REQUIREMENTS WITHIN THESE PROJECT DRAWINGS.

SERVICE ADJUSTMENT NOTES:

- SERVICE AUTHORITY INFRASTRUCTURE ADJUSTMENTS ARE TO BE PERFORMED BY CONTRACTORS APPROVED BY THE RELEVANT SERVICE AUTHORITY.

SAFETY IN DESIGN NOTES:

- POTENTIAL SAFETY HAZARDS IDENTIFIED BY THE DESIGNER HAVE BEEN ASSESSED FOR THIS PROJECT IN ACCORDANCE WITH SAFE DESIGN OF STRUCTURES - CODE OF PRACTICES BY SAFE WORK AUSTRALIA, 2012. REFER TO THE SAFETY IN DESIGN REPORT FOR THE POTENTIAL SAFETY HAZARDS.
- DISCLAIMER: IT MUST BE ACKNOWLEDGED THAT NEW AND/OR DIFFERENT RISKS MAY BECOME APPARENT DURING EACH PROJECT PHASE. THE DESIGNER HAS ENSURED, SO FAR AS REASONABLY PRACTICABLE, THAT THE STRUCTURE/MUNICIPAL WORK IS DESIGNED TO MINIMISE RISK TO THE HEALTH AND SAFETY OF PERSONS INVOLVED IN CONSTRUCTION OR USE RELATED ACTIVITIES. FURTHER, IN APPENDIX A - SAFETY IN DESIGN RISK REGISTER OF THE SAFETY IN DESIGN REPORT, ASSUMPTIONS MAY HAVE BEEN MADE WITHIN THE DIFFERENT PROJECT PHASES AS TO HOW THE PROJECT AND/OR PROJECT ELEMENTS WILL BE CONSTRUCTED AND MAINTAINED. THIS MAY DIFFER FROM THE END METHODS ADOPTED.
- ANY PERSON WHO UNDERTAKES ALTERATIONS, VARIATIONS OR MODIFICATIONS TO THESE DESIGN DRAWINGS, WITHOUT CONSULTATION AND APPROVAL FROM THE ORIGINAL OR SUBSEQUENT DESIGNER, WILL ASSUME THE DUTIES OF A DESIGNER AND WILL BE HELD RESPONSIBLE FOR THE SAFETY IN DESIGN FOR THIS PROJECT.
- ALL WORKS MUST COMPLY WITH W.H. & S. ACT, 2011.

ACID SULFATE SOILS:

- DUE TO THE ELEVATION AND SITE GEOLOGY IT IS UNLIKELY THAT A.S.S. WILL BE ENCOUNTERED ON THIS SITE.
- IF A.S.S. ARE ENCOUNTERED ON THE SITE DURING CONSTRUCTION ENGAGE A SUITABLY QUALIFIED ENVIRONMENTAL CONSULTANT TO PRODUCE AN A.S.S. MANAGEMENT PLAN FOR IT.

FAUNA MANAGEMENT:

- ANY CLEARING OF REMNANT VEGETATION WILL REQUIRE A FAUNA SPOTTER / CATCHER TO BE IN ATTENDANCE.

VEGETATION MANAGEMENT:

- WHERE VEGETATION COVENANT EXISTS ON SITE. THIS AREA TO BE CLEARLY PEGGED AND FLAGGED OR FENCED PRIOR TO WORK COMMENCING ON SITE TO PREVENT ANY CLEARING IN THIS AREA.

BUSH FIRE MANAGEMENT:

- THE SITE IS PREDOMINANTLY CLEARED AND NOT IN A BUSH FIRE HAZARD ZONE (BUT STILL MAY BE SUBJECT TO BUSH FIRES)
- ANY CLEARED VEGETATION TO BE MULCHED AND USED ON SITE.
- MULCHED STOCK PILES TO BE NO MORE THAN 2.0m HIGH AND WET DOWN DAILY.
- REMOVE MULCH FROM SITE IF SAFE TO DO SO SHOULD BUSHFIRES THREATEN THE AREA.

WEED MANAGEMENT NOTES:

- EXISTING TOPSOIL SHALL BE STOCKPILED AND REUSED AFTER SITE WORKS. IMPORTED FILL MATERIAL MUST BE CLEAN FILL, FREE OF SEEDS, ORGANIC MATTER, OR CONTAMINANTS.

WASTE MANAGEMENT NOTES:

- ALL WASTE SHALL BE CONTAINED IN PROVIDED CONTAINERS, RESPONSIBLY DISPOSED OF OFF-SITE, AND MINIMIZED THROUGH REUSE WHEREVER POSSIBLE.

NOISE MANAGEMENT NOTES:



- WORKING HOURS - WORKING HOURS FOR THE SITE ARE TO BE 6.30AM TO 6.30PM MONDAY TO SATURDAY, NO WORK TO BE UNDERTAKEN OUTSIDE OF TIMES SPECIFIED UNDER ANY CIRCUMSTANCES UNLESS APPROVED BY COUNCIL'S SUPERINTENDENT.
- VEHICLES AND MACHINERY SHALL OPERATE ONLY WHEN NECESSARY, BE REGULARLY MAINTAINED TO MINIMIZE NOISE, AND NOT BE LEFT IDLING WHEN NOT IN USE.
- NOISE SHIELDING ON PLANT TO BE INSPECTED PRIOR TO COMMENCEMENT OF WORKS AND MADE GOOD WHERE FOUND TO BE FAULTY.

DUST MANAGEMENT NOTES:

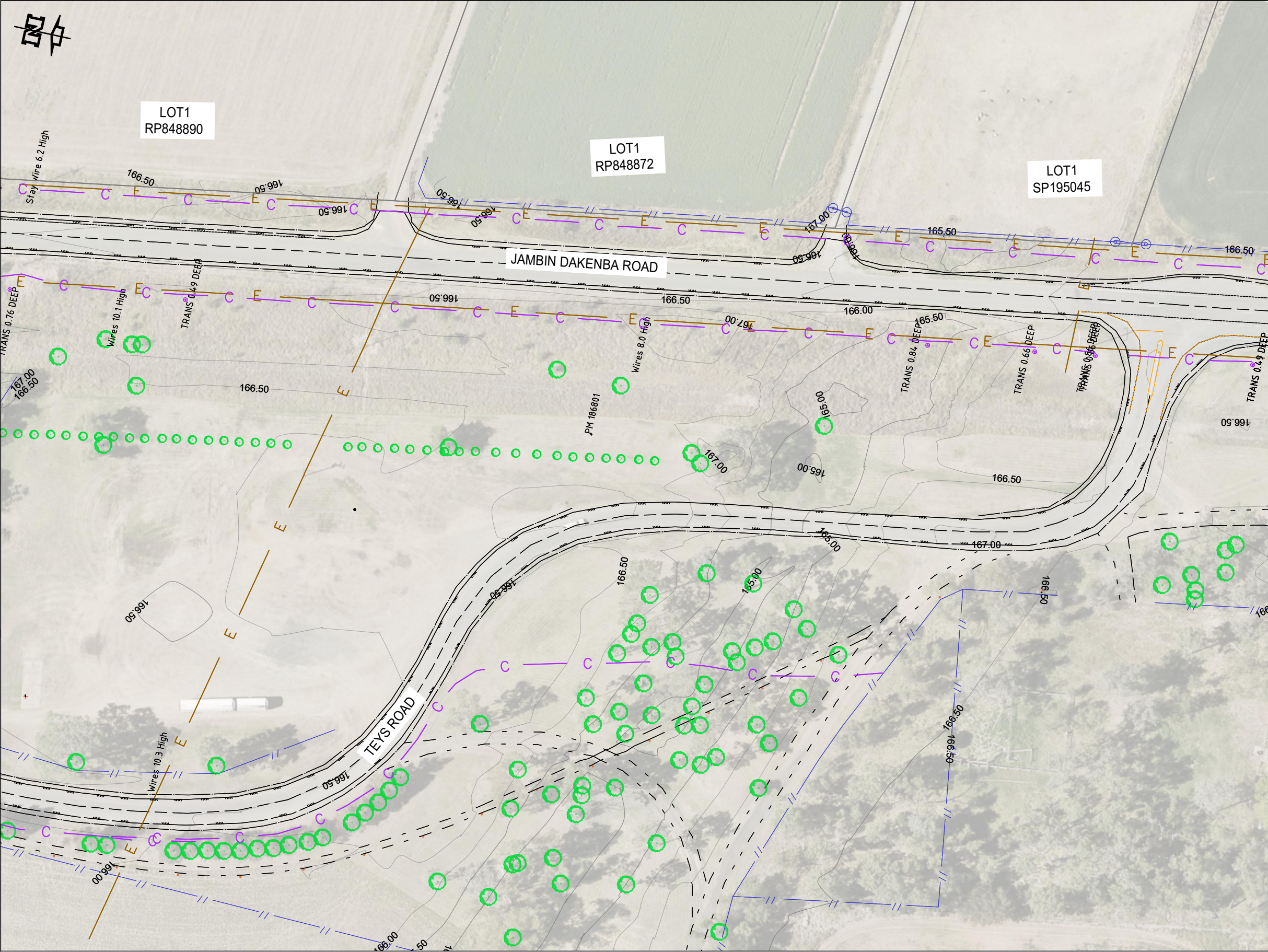
- WIND CONDITIONS ON SITE ARE TO BE MONITORED AND SITE WORKS STOPPED IF WIND STRENGTH IS SUCH THAT EFFORTS TO MINIMISE AND/OR SUPPRESS DUST ARE INEFFECTIVE.
- EXPOSED EARTH SHALL BE TOPSOILED, VEGETATED, AND LANDSCAPED AS SOON AS POSSIBLE AFTER TRIMMING TO PREVENT EROSION.
- WET DOWN DUST GENERATING SURFACES DAILY PRIOR TO COMMENCEMENT OF WORK USING WATER TRUCKS, SPRINKLERS AND HOSE WATERING BY HAND.
- ADDITIONAL WETTING DOWN OF SITE AREAS IS TO BE UNDERTAKEN AS NEEDED DURING THE COURSE OF THE DAY WHERE WORK AREAS HAVE DRIED AND ARE GENERATING DUST.

EROSION AND SEDIMENT MANAGEMENT NOTES:

- RAINWATER DISCHARGE FROM UPSTREAM PROPERTIES SHOULD BE DIVERTED FROM WORK AREAS USING TEMPORARY BUNDING.
- RE-VEGETATED AND LANDSCAPED AREAS SHALL BE REGULARLY WATERED TO ASSIST ESTABLISHMENT OF COVER.
- ALL BANKS AND BATTERS ARE TO BE REGULARLY INSPECTED TO IDENTIFY AREAS OF EROSION AND RESHAPED TO PREVENT FURTHER EROSION IF NECESSARY - RECTIFICATION WORKS ARE TO BE RE-VEGETATED IMMEDIATELY.
- STOCKPILES SHALL BE PLACED OUTSIDE STORMWATER FLOW PATHS, WITH SILT FENCING INSTALLED ON THE DOWNSTREAM SIDE. THOSE LEFT FOR 28 DAYS OR MORE SHALL BE GRASS-SEEDED AND MAINTAIN A MAXIMUM SLOPE OF 2H:1V.
- SILT FENCING & SEDIMENT TRAPS TO BE INSTALLED AT AREAS OF SITE DISCHARGE AS SHOWN ON PLAN.
- SILT FENCING TO BE INSTALLED TO DOWNSTREAM SIDE OF STOCKPILE AREAS, STRIPPED AREAS, AND ANY OTHER AREAS OF BARE EARTH WHERE SILT LADEN RUNOFF CAN BE GENERATED.
- SEDIMENT FENCE LAYOUT SHALL CONFORM TO "TYPICAL LAYOUT ACROSS GRADE" AS DETAILED ON STANDARD DRAWING CMDG-D-050.
- SILT FENCES AND SEDIMENT TRAPS SHALL REMAIN ON SITE UNTIL ALL CONSTRUCTION ACTIVITIES ARE COMPLETE AND THERE IS 90% VEGETATION COVERAGE OF PROPOSED LANDSCAPED AREAS.

				P. BARAL	T. UPRETI	 	TEYS ROAD ACCESS PATH GENERAL NOTES			
				Designed G. DE SILVA	Drafted N. GARVEY					
A	ISSUE FOR CONSTRUCTION	20/03/2025	NOT TO SCALE				FOR CONSTRUCTION	Dwg. No. 7940-9005-002	Sheet 2 OF 11	Issue A
No.	Revision	Date		Checked	Approved RPEQ 31721					





PLAN

LEGEND

- EXISTING TREE
- EXISTING EDGE OF BITUMEN
- EXISTING EDGE OF ROAD
- COMMUNICATION LINE
- ELECTRICAL-AERIAL LINE
- EXISTING SURFACE CONTOURS (1.0 M)
- EXISTING PRIVATE ACCESS
- EXISTING FENCE LINE

EXISTING LEVELS AND SERVICES

1. THE CONTRACTOR SHALL VERIFY THE LOCATIONS AND LEVELS OF ALL EXISTING SERVICES WITH THE RELEVANT AUTHORITIES INCLUDING "DIAL BEFORE YOU DIG" PRIOR TO COMMENCING CONSTRUCTION.
2. ANY COSTS ASSOCIATED WITH REPAIRING DAMAGE TO EXISTING SERVICES SHALL BE PAID FOR BY THE CONTRACTOR.
3. THE CONTRACTOR SHALL VERIFY THAT THE EXISTING LEVELS ARE AS PER THIS DESIGN WHERE CONNECTIONS TO EXISTING INFRASTRUCTURE ARE REQUIRED. ANY DIFFERENCES TO BE NOTIFIED TO THE ENGINEER PRIOR TO ORDERING MATERIALS OR COMMENCING ANY WORKS.
4. PRIOR TO COMMENCING WORKS THE CONTRACTOR SHALL VERIFY THAT THERE ARE NO CLASHES BETWEEN ANY CROSSING SERVICE OR PIPELINE. ANY CLASHES TO BE NOTIFIED TO THE ENGINEER PRIOR TO WORKS COMMENCING.
5. PRIOR TO COMMENCING WORKS THE CONTRACTOR SHALL VERIFY LOCATION AND DETAILS OF ALL EXISTING SERVICE CONNECTIONS TO NEW ALLOTMENTS PREVIOUSLY INSTALLED.

\*\*\* WARNING \*\*\*

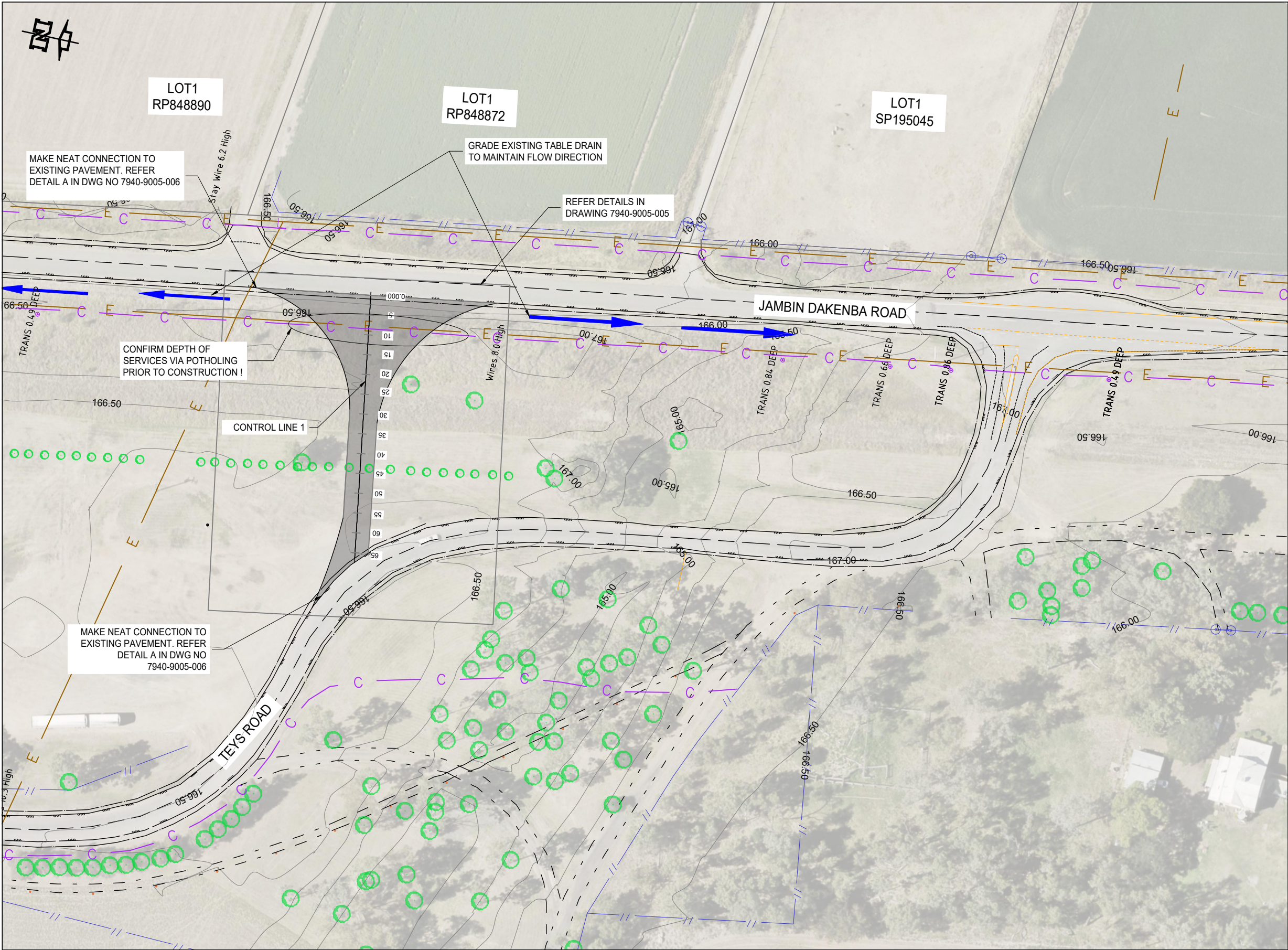
**BEWARE OF AERIAL SERVICES**  
Overhead powerlines and communication cables within work area.  
Contact service provider for advice prior to commencement of work.

\*\*\* WARNING \*\*\*

**BEWARE OF UNDERGROUND SERVICES**  
The location of underground services has been compiled from engineering survey and interpolated from Dial Before You Dig as provided by Service Authorities. Ensure all services are accurately located prior to commencement of work.

--	--	--	--	--	--	--	--	--	--	--	--	--	--	--	--	--	--	--	--	--	--	--	--	--	--	--	--	--	--	--	--	--	--	--	--	--	--	--	--	--	--	--	--	--	--	--	--	--	--	--	--	--	--	--	--	--	--	--	--	--	--	--	--	--	--	--	--	--	--	--	--	--	--	--	--	--	--	--	--	--	--	--	--	--	--	--	--	--	--	--	--	--	--	--	--	--	--	--	--	--	--	--	--	--	--	--	--	--	--	--	--	--	--	--	--	--	--	--	--	--	--	--	--	--	--	--	--	--	--	--	--	--	--	--	--	--	--	--	--	--	--	--	--	--	--	--	--	--	--	--	--	--	--	--	--	--	--	--	--	--	--	--	--	--	--	--	--	--	--	--	--	--	--	--	--	--	--	--	--	--	--	--	--	--	--	--	--	--	--	--	--	--	--	--	--	--	--	--	--	--	--	--	--	--	--	--	--	--	--	--	--	--	--	--	--	--	--	--	--	--	--	--	--	--	--	--	--	--	--	--	--	--	--	--	--	--	--	--	--	--	--	--	--	--	--	--	--	--	--	--	--	--	--	--	--	--	--	--	--	--	--	--	--	--	--	--	--	--	--	--	--	--	--	--	--	--	--	--	--	--	--	--	--	--	--	--	--	--	--	--	--	--	--	--	--	--	--	--	--	--	--	--	--	--	--	--	--	--	--	--	--	--	--	--	--	--	--	--	--	--	--	--	--	--	--	--	--	--	--	--	--	--	--	--	--	--	--	--	--	--	--	--	--	--	--	--	--	--	--	--	--	--	--	--	--	--	--	--	--	--	--	--	--	--	--	--	--	--	--	--	--	--	--	--	--	--	--	--	--	--	--	--	--	--	--	--	--	--	--	--	--	--	--	--	--	--	--	--	--	--	--	--	--	--	--	--	--	--	--	--	--	--	--	--	--	--	--	--	--	--	--	--	--	--	--	--	--	--	--	--	--	--	--	--	--	--	--	--	--	--	--	--	--	--	--	--	--	--	--	--	--	--	--	--	--	--	--	--	--	--	--	--	--	--	--	--	--	--	--	--	--	--	--	--	--	--	--	--	--	--	--	--	--	--	--	--	--	--	--	--	--	--	--	--	--	--	--	--	--	--	--	--	--	--	--	--	--	--	--	--	--	--	--	--	--	--	--	--	--	--	--	--	--	--	--	--	--	--	--	--	--	--	--	--	--	--	--	--	--	--	--	--	--	--	--	--	--	--	--	--	--	--	--	--	--	--	--	--	--	--	--	--	--	--	--	--	--	--	--	--	--	--	--	--	--	--	--	--	--	--	--	--	--	--	--	--	--	--	--	--	--	--	--	--	--	--	--	--	--	--	--	--	--	--	--	--	--	--	--	--	--	--	--	--	--	--	--	--	--	--	--	--	--	--	--	--	--	--	--	--	--	--	--	--	--	--	--	--	--	--	--	--	--	--	--	--	--	--	--	--	--	--	--	--	--	--	--	--	--	--	--	--	--	--	--	--	--	--	--	--	--	--	--	--	--	--	--	--	--	--	--	--	--	--	--	--	--	--	--	--	--	--	--	--	--	--	--	--	--	--	--	--	--	--	--	--	--	--	--	--	--	--	--	--	--	--	--	--	--	--	--	--	--	--	--	--	--	--	--	--	--	--	--	--	--	--	--	--	--	--	--	--	--	--	--	--	--	--	--	--	--	--	--	--	--	--	--	--	--	--	--	--	--	--	--	--	--	--	--	--	--	--	--	--	--	--	--	--	--	--	--	--	--	--	--	--	--	--	--	--	--	--	--	--	--	--	--	--	--	--	--	--	--	--	--	--	--	--	--	--	--	--	--	--	--	--	--	--	--	--	--	--	--	--	--	--	--	--	--	--	--	--	--	--	--	--	--	--	--	--	--	--	--	--	--	--	--	--	--	--	--	--	--	--	--	--	--	--	--	--	--	--	--	--	--	--	--	--	--	--	--	--	--	--	--	--	--	--	--	--	--	--	--	--	--	--	--	--	--	--	--	--	--	--	--	--	--	--	--	--	--	--	--	--	--	--	--	--	--	--	--	--	--	--	--	--	--	--	--	--	--	--	--	--	--	--	--	--	--	--	--	--	--	--	--	--	--	--	--	--	--	--	--	--	--	--	--	--	--	--	--	--	--	--	--	--	--	--	--	--	--	--	--	--	--	--	--	--	--	--	--	--	--	--	--	--	--	--	--	--	--	--	--	--	--	--	--	--	--	--	--	--	--	--	--	--	--	--	--	--	--	--	--	--	--	--	--	--	--	--	--	--	--	--	--	--	--	--	--	--	--	--	--	--	--	--	--	--	--	--	--	--	--	--	--	--	--	--	--	--	--	--	--	--	--	--	--	--	--	--	--	--	--	--	--	--	--	--	--	--	--	--	--	--	--	--	--	--	--	--	--	--	--	--	--	--	--	--	--	--	--	--	--	--	--	--	--	--	--	--	--	--	--	--	--	--	--	--	--	--	--	--	--	--	--	--	--	--	--	--	--	--	--	--	--	--	--	--	--	--	--	--	--	--	--	--	--	--	--	--	--	--	--	--	--	--	--	--	--	--	--	--	--	--	--	--	--	--	--	--	--	--	--	--	--	--	--	--	--	--	--	--	--	--	--	--	--	--	--	--	--	--	--	--	--	--	--	--	--	--	--	--	--	--	--	--	--	--	--	--	--	--	--	--	--	--	--	--	--	--	--	--	--	--	--	--	--	--	--	--	--	--	--	--	--	--	--	--	--	--	--	--	--	--	--	--	--	--	--	--	--	--	--	--	--	--	--	--	--	--	--	--	--	--	--	--	--	--	--	--	--	--	--	--	--	--	--	--	--	--	--	--	--	--	--	--	--	--	--	--	--	--	--	--	--	--	--	--	--	--	--	--	--	--	--	--	--	--	--	--	--	--	--	--	--	--	--	--	--	--	--	--	--	--	--	--	--	--	--	--	--	--	--	--	--	--	--	--	--	--	--	--	--	--	--	--	--	--	--	--	--	--	--	--	--	--	--	--	--	--	--	--	--	--	--	--	--	--	--	--	--	--	--	--	--	--	--	--	--	--	--	--	--	--	--	--	--	--





PLAN

LEGEND

- EXISTING TREE
- EXISTING EDGE OF BITUMEN
- EXISTING EDGE OF ROAD
- COMMUNICATION LINE
- ELECTRICAL-AERIAL LINE
- EXISTING SURFACE CONTOURS (1.0 M)
- EXISTING PRIVATE ACCESS
- EXISTING FENCE LINE
- PROPOSED SEALED PAVEMENT
- DIRECTION OF STORM WATER OVERLAND FLOW

NO WORK IS SO  
IMPORTANT THAT  
IT CANNOT BE  
DONE SAFELY

\*\*\* WARNING \*\*\*

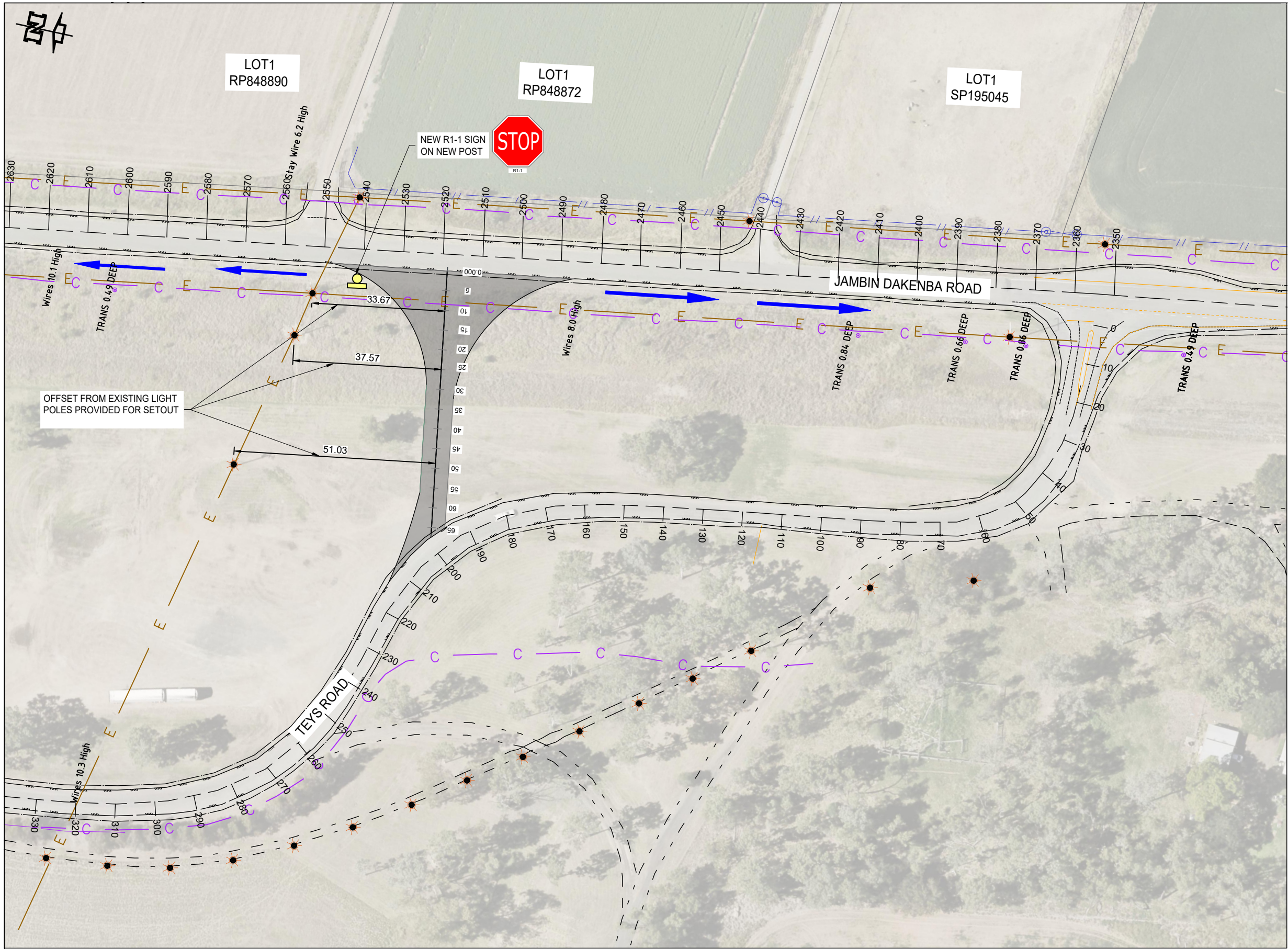
**BEWARE OF AERIAL SERVICES**  
Overhead powerlines and communication cables within work area.  
Contact service provider for advice prior to commencement of work.

\*\*\* WARNING \*\*\*

**BEWARE OF UNDERGROUND SERVICES**  
The location of underground services has been compiled from engineering survey and interpolated from Dial Before You Dig as provided by Service Authorities. Ensure all services are accurately located prior to commencement of work.

			<div><div><div>05101520</div><div>HORIZ AND PLAN</div></div><div>1:1000</div></div>	P. BARAL	T. UPRETI	<div><div><div><div></div><div></div><div></div></div><div><div>Banana</div><div>SHIRE</div><div>SHIRE OF OPPORTUNITY</div></div></div><div><div><div></div><div></div><div></div></div><div><div>BEFORE</div><div>YOU DIG</div><div>www.byda.com.au</div></div></div></div>	TEYS ROAD ACCESS PATH GENERAL ARRANGEMENT PLAN					
				Designed G. DE SILVA	Drafted N. GARVEY							
A	ISSUE FOR CONSTRUCTION	20/03/2025										
No.	Revision	Date		Scale:	FULL SIZE A3		Checked	Approved RPEQ 31721	<div>FOR CONSTRUCTION</div>	Dwg. No. 7940-9005-004	Sheet 4 OF 11	Issue A





PLAN

A		ISSUE FOR CONSTRUCTION	20/03/2025
No	Revision	Date	

0 5 10 15 20  
HORIZ AND PLAN 1:1000

Scale:

FULL SIZE A3

P. BARAL	T. UPRETI
Designed G. DE SILVA	Drafted N. GARVEY
Checked	Approved RPEQ 31721



TEYS ROAD ACCESS PATH  
SET OUT PLAN

FOR CONSTRUCTION	Dwg. No. 7940-9005-005	Sheet 5 OF 11	Issue A
------------------	------------------------	---------------	---------

LEGEND

	EXISTING EDGE OF BITUMEN
	EXISTING EDGE OF ROAD
	COMMUNICATION LINE
	ELECTRICAL-AERIAL LINE
	ELECTRIC POLE
	EXISTING PRIVATE ACCESS
	EXISTING FENCE LINE
	PROPOSED SEALED PAVEMENT
	DIRECTION OF STORM WATER OVERLAND FLOW
	PROPOSED TRAFFIC SIGN
	ROAD CHAINAGE OBTAINED FROM MAPINFO, PROVIDED FOR INFORMATION ONLY. NOT TO BE USED FOR SET OUT.

NO WORK IS SO  
IMPORTANT THAT  
IT CANNOT BE  
DONE SAFELY

NEW SIGNAGE SCHEDULE

SIGN	SIGN NUMBER	QTY
STOP SIGN	R1-1	1

NOTES:  
ALL DIMENSIONS IN METRES UNLESS SHOWN OTHERWISE.

\*\*\*WARNING\*\*\*  
**BEWARE OF AERIAL SERVICES**  
Overhead powerlines and communication cables within work area. Contact service provider for advice prior to commencement of work.

\*\*\*WARNING\*\*\*  
**BEWARE OF UNDERGROUND SERVICES**  
The location of underground services has been compiled from engineering survey and interpolated from Dial Before You Dig as provided by Service Authorities. Ensure all services are accurately located prior to commencement of work.









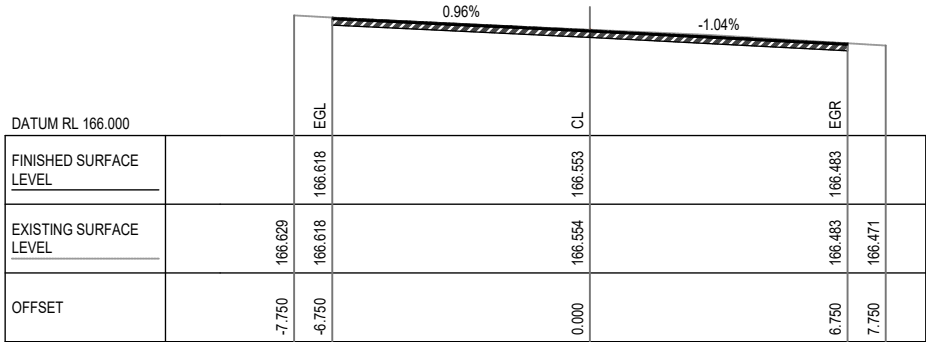


LEGEND

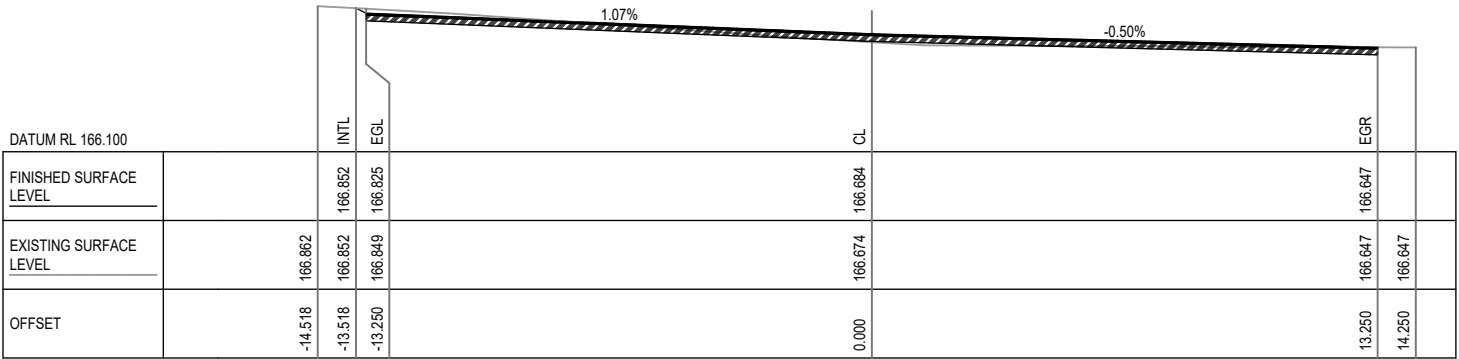


NO WORK IS SO  
IMPORTANT THAT  
IT CANNOT BE  
DONE SAFELY

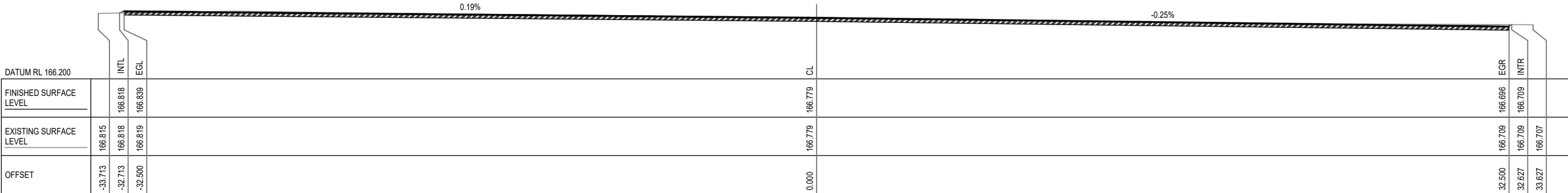
PAVEMENT



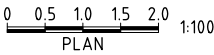
CH 20.000



CH 10.000



CH 0.000



A	ISSUE FOR CONSTRUCTION	20/03/2025
No.	Revision	Date

Scale:

FULL SIZE A3

P. BARAL	T. UPRETI
Designed	Drafted
G. DE SILVA	N. GARVEY
Checked	Approved RPEQ 31721



TEYS ROAD ACCESS PATH  
CROSS SECTIONS-SHEET 1

FOR CONSTRUCTION

Dwg. No. 7940-9005-009

Sheet 9 OF 11

Issue A

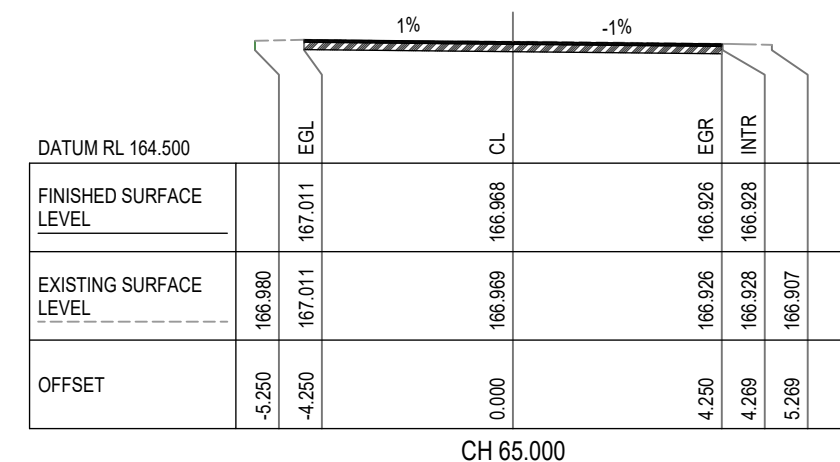
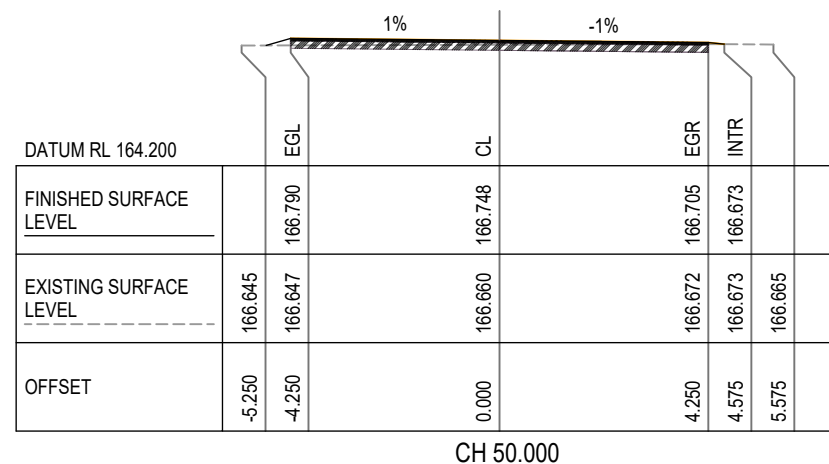
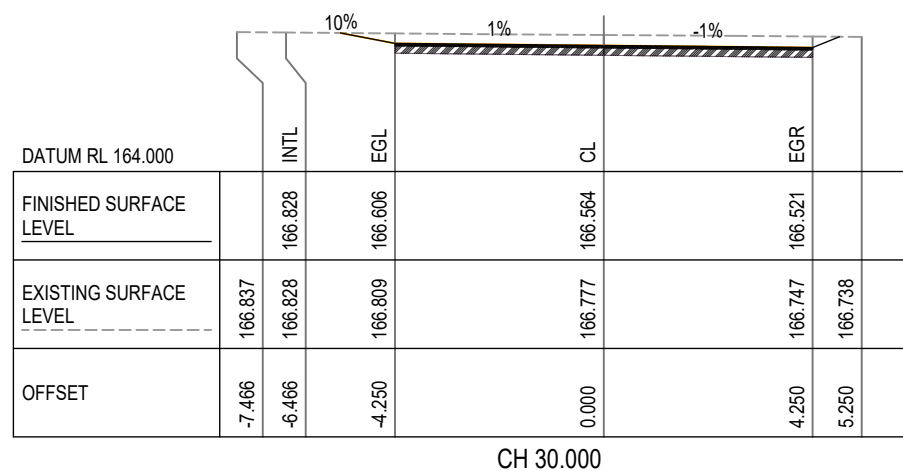
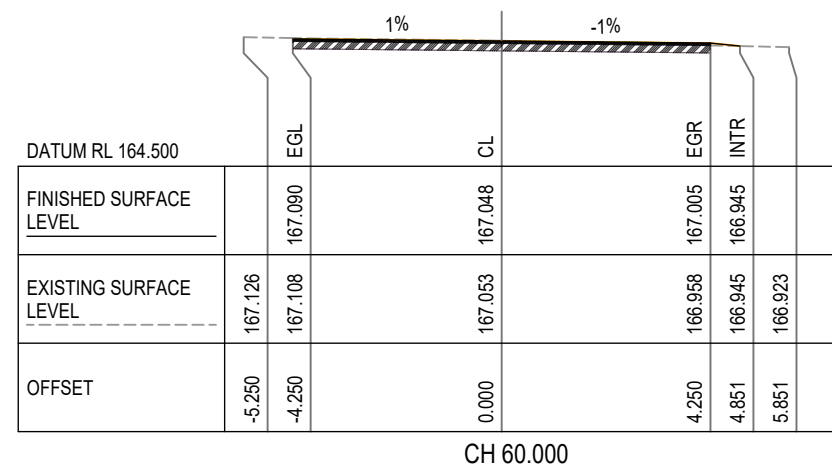
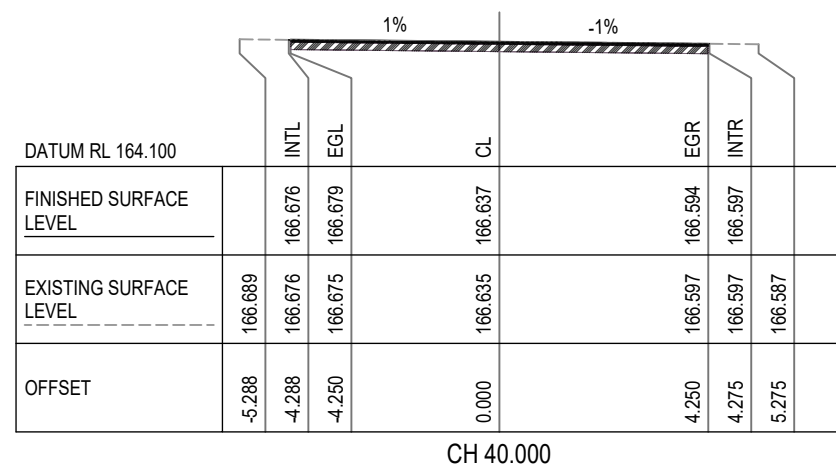


NO WORK IS SO  
IMPORTANT THAT  
IT CANNOT BE  
DONE SAFELY

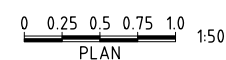
## LEGEND



PAVEMENT



A	ISSUE FOR CONSTRUCTION	20/03/2025
No.	Revision	Date



Scale:

FULL SIZE A3

P. BARAL
----------

Designed
G. DE SILVA

3 | Checked

T. UPRETI

	Drafted
	N. GARVEY

Approved RPEQ 31721



# TEYS ROAD ACCESS PATH

## CROSS SECTIONS-SHEET 2

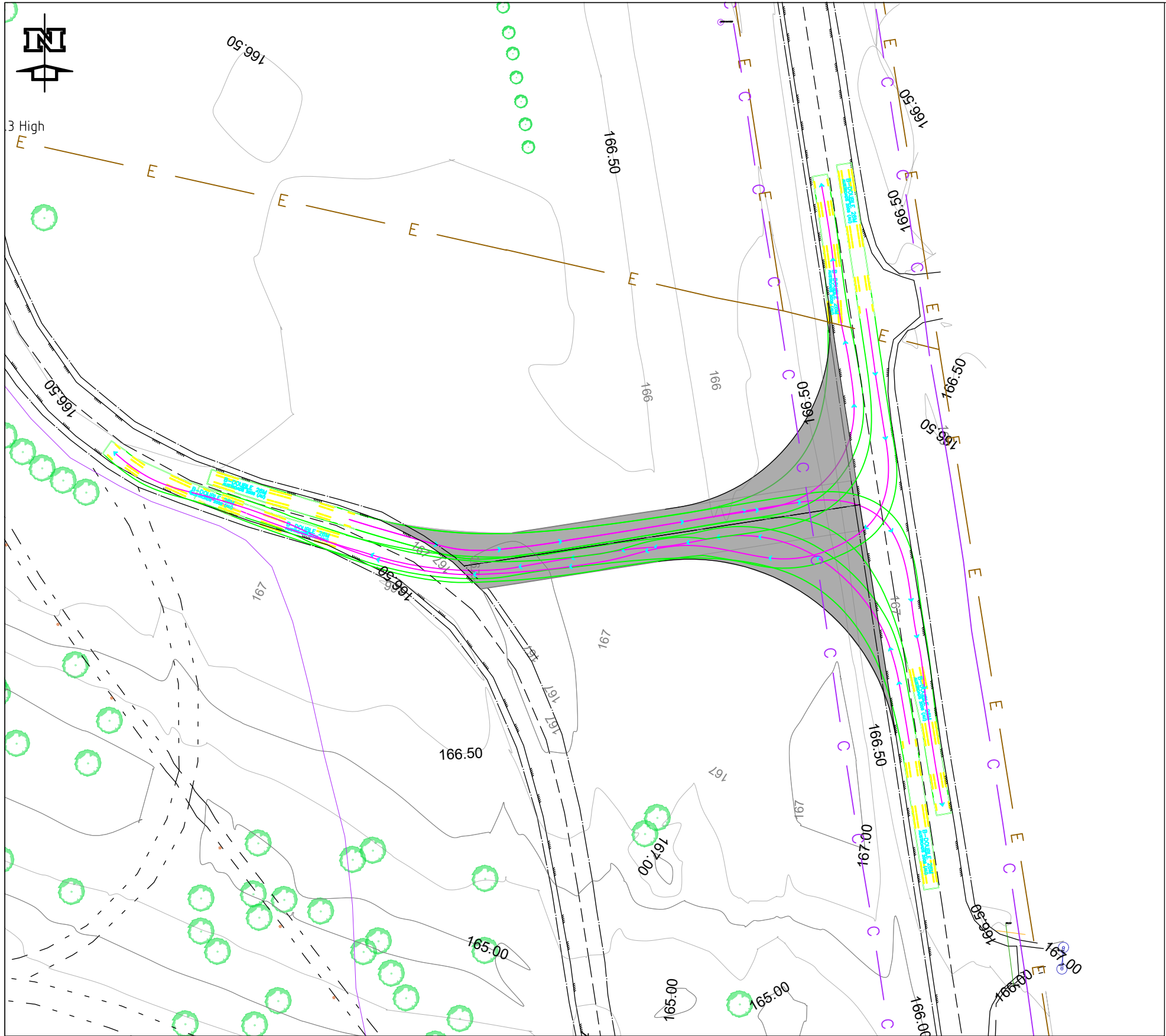
FOR CONSTRUCTION

Dwg. No.	7940-9005-010
----------	---------------

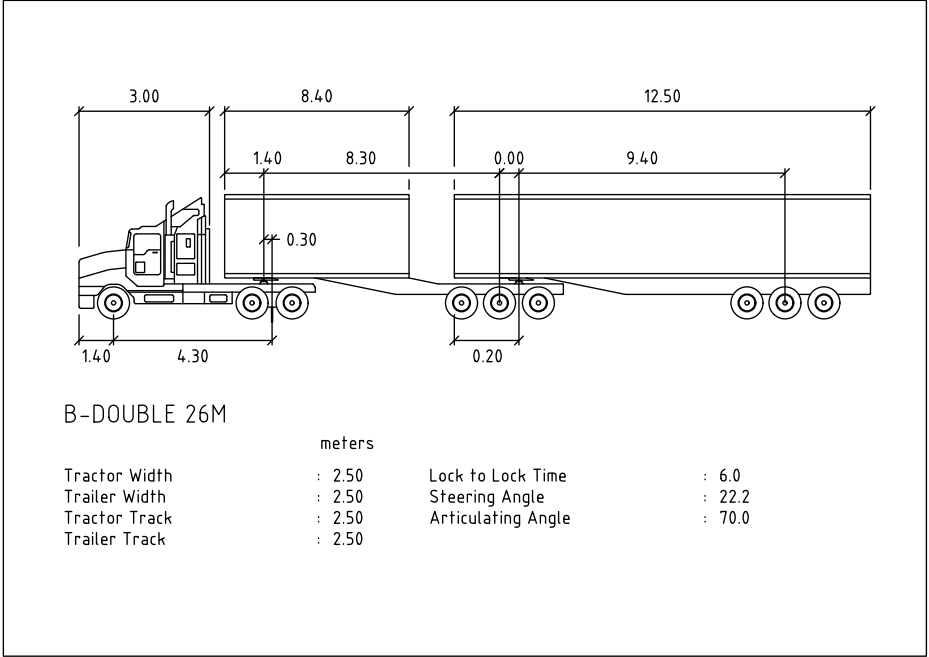
Sheet  
10 OF 11

	Issue
--	-------





**TURN PATHS DIAGRAM**



NO WORK IS SO  
IMPORTANT THAT  
IT CANNOT BE  
DONE SAFELY

A	ISSUE FOR CONSTRUCTION	20/03/2025
No.	Revision	Date

0 3.75 7.5 11.25 15  
HORIZ AND PLAN 1:750

Scale:

FULL SIZE A3

P. BARAL	T. UPRETI
Designed G. DE SILVA	Drafted N. GARVEY
Checked	Approved RPEQ 31721



**TEYS ROAD ACCESS PATH  
TURN PATHS DIAGRAM**

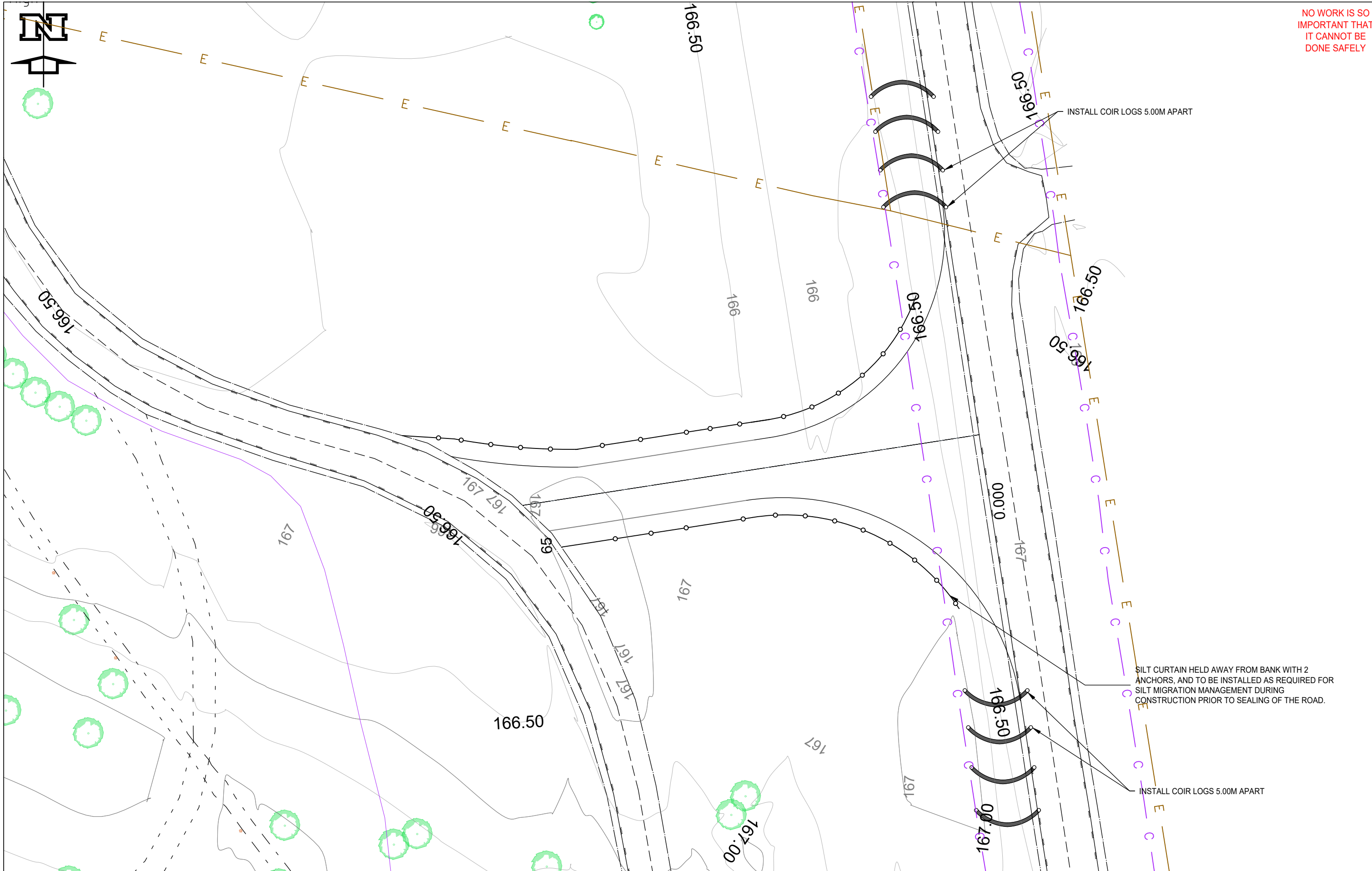
FOR CONSTRUCTION

Dwg. No. 7940-9005-011

Sheet 11 OF 11

Issue A





NO WORK IS SO  
IMPORTANT THAT  
IT CANNOT BE  
DONE SAFELY



A		ISSUE FOR CONSTRUCTION	20/03/2025
No.	Revision	Date	

Scale:

0 2.5 5 7.5 10 1:500  
HORIZ AND PLAN

FULL SIZE A3

P. BARAL	T. UPRETI
Designed G. DE SILVA	Drafted N. GARVEY
Checked	Approved RPEQ 31721



**BEFORE  
YOU DIG**  
www.byda.com.au

### TEYS ROAD ACCESS PATH EROSION AND SEDIMENT CONTROL PLAN

FOR CONSTRUCTION

Dwg. No. 7940-9005 -011	Sheet 12 OF 11	Issue A
----------------------------	-------------------	------------