

# Water Treatment Plant

Approximate Area: 1ha

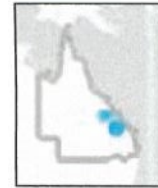
24°34'21"S 149°57'52"E

24°34'17"S 149°57'58"E

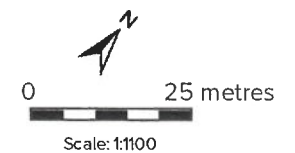


24°34'25"S 149°57'56"E

24°34'21"S 149°58'2"E



Legend located on next page



Printed at: A4

Print date: 24/1/2023

Not suitable for accurate measurement.

Projection: Web Mercator EPSG 102100 (3857)

For more information, visit  
<https://qldglobe.information.qld.gov.au/help-info/Contact-us.html>

Includes material © State of Queensland 2022. You are responsible for ensuring that the map is suitable for your purposes. The State of Queensland makes no representation or warranties in relation to the map contents and disclaims all liability.

If imagery is displayed, imagery includes material © CNES reproduced under license from Airbus DS, all rights reserved © 21AT © Earth-i, all rights reserved, 2019



# Water Tower - Dawson Highway

Approximate Area: 2324m<sup>2</sup>

24°33'59"S 149°58'29"E

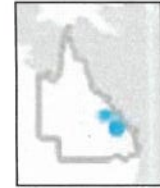
24°33'56"S 149°58'33"E



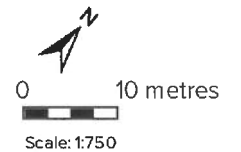
24°34'2"S 149°58'31"E

24°33'59"S 149°58'35"E

A product of  
**Queensland Globe**



Legend located on next page



Printed at: A4

Print date: 24/1/2023

Not suitable for accurate measurement.  
Projection: Web Mercator EPSG 102100 (3857)

For more information, visit  
<https://qldglobe.information.qld.gov.au/help-info/Contact-us.html>

Includes material © State of Queensland 2022. You are responsible for ensuring that the map is suitable for your purposes. The State of Queensland makes no representation or warranties in relation to the map contents and disclaims all liability.

If imagery is displayed, imagery includes material © CNES reproduced under license from Airbus DS, all rights reserved  
© 21AT © Earth-i, all rights reserved, 2019

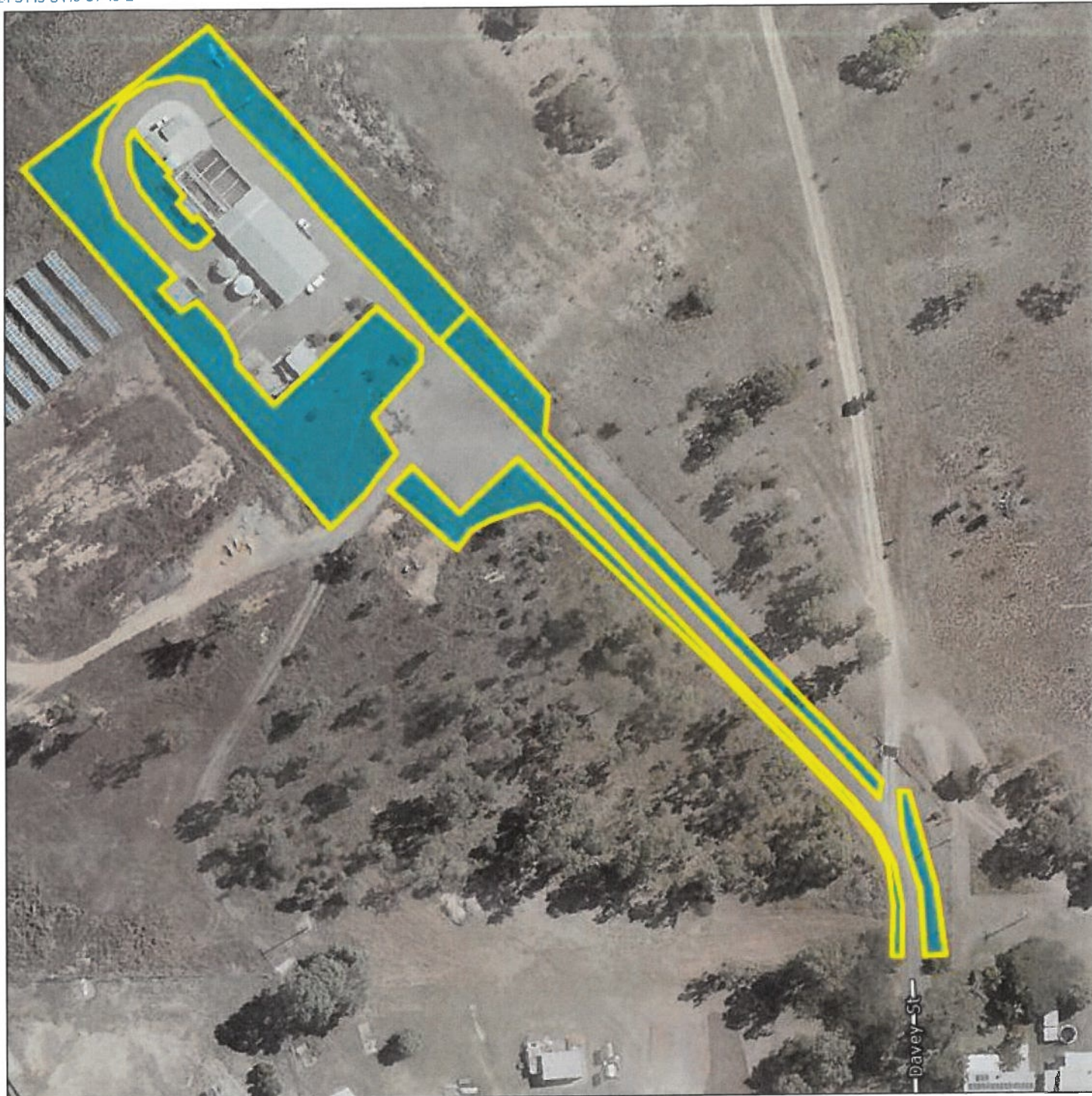


# Waste Transfer Station

Approximate Area: 0.432ha

24°34'15"S 149°57'49"E

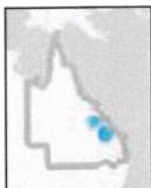
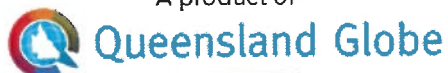
24°34'9"S 149°57'56"E



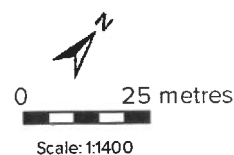
24°34'21"S 149°57'55"E

24°34'16"S 149°58'2"E

A product of



Legend located on next page



Printed at: A4  
Print date: 24/1/2023

Not suitable for accurate measurement.  
Projection: Web Mercator EPSG 102100 (3857)

For more information, visit  
<https://qldglobe.information.qld.gov.au/help-info/Contact-us.html>

Includes material © State of Queensland 2022. You are responsible for ensuring that the map is suitable for your purposes. The State of Queensland makes no representation or warranties in relation to the map contents and disclaims all liability.

If imagery is displayed, imagery includes material © CNES reproduced under license from Airbus DS, all rights reserved © 21AT © Earth-i, all rights reserved, 2019



**Queensland  
Government**  
Department of Resources



# Walkers Gully

Approximate Area: 0.355ha

24°34'15"S 149°58'30"E

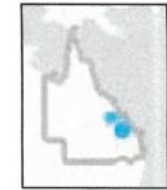
24°34'12"S 149°58'34"E



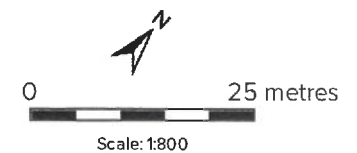
24°34'18"S 149°58'33"E

24°34'15"S 149°58'37"E

A product of  
**Queensland Globe**



Legend located on next page



Printed at: A4

Print date: 24/1/2023

Not suitable for accurate measurement.  
**Projection:** Web Mercator EPSG 102100 (3857)

For more information, visit  
<https://qldglobe.information.qld.gov.au/help-info/Contact-us.html>

Includes material © State of Queensland 2022. You are responsible for ensuring that the map is suitable for your purposes. The State of Queensland makes no representation or warranties in relation to the map contents and disclaims all liability.

If imagery is displayed, imagery includes material © CNES reproduced under license from Airbus DS, all rights reserved  
© 21AT © Earth-i, all rights reserved, 2019



# Van Tielberg's Island

Approximate Area: 3612m<sup>2</sup>

24°34'24"S 149°57'57"E

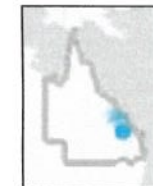
24°34'21"S 149°58'3"E



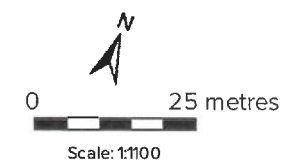
24°34'29"S 149°57'59"E

24°34'26"S 149°58'6"E

A product of  
**Queensland Globe**



Legend located on next page



Printed at: A4  
Print date: 24/1/2023

Not suitable for accurate measurement.  
Projection: Web Mercator EPSG 102100 (3857)

For more information, visit  
<https://qldglobe.information.qld.gov.au/help-info/Contact-us.html>

Includes material © State of Queensland 2022. You are responsible for ensuring that the map is suitable for your purposes. The State of Queensland makes no representation or warranties in relation to the map contents and disclaims all liability.

If imagery is displayed, imagery includes material © CNES reproduced under license from Airbus DS, all rights reserved  
© 21AT © Earth-i, all rights reserved, 2019



# Tandarra Gully

Approximate Area: 0.7ha

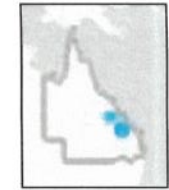
24°34'17"S 149°58'26"E

24°34'13"S 149°58'31"E

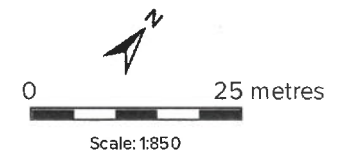


24°34'20"S 149°58'29"E

24°34'17"S 149°58'34"E



Legend located on next page



Printed at: A4

Print date: 24/1/2023

Not suitable for accurate measurement.  
Projection: Web Mercator EPSG 102100 (3857)

For more information, visit  
<https://qldglobe.information.qld.gov.au/help-info/Contact-us.html>

Includes material © State of Queensland 2022. You are responsible for ensuring that the map is suitable for your purposes. The State of Queensland makes no representation or warranties in relation to the map contents and disclaims all liability.

If imagery is displayed, Imagery includes material © CNES reproduced under license from Airbus DS, all rights reserved © 21AT © Earth-i, all rights reserved, 2019



**Queensland  
Government**

Department of Resources

# Skate Park - Moura Rec Grounds

Approximate Area: 0.218ha

24°34'23"S 149°58'32"E

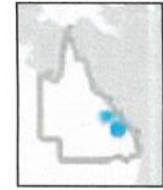
24°34'20"S 149°58'35"E



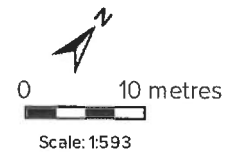
24°34'25"S 149°58'34"E

24°34'23"S 149°58'37"E

A product of  
**Queensland Globe**



Legend located on next page



Printed at: A4  
Print date: 24/1/2023

Not suitable for accurate measurement.  
**Projection:** Web Mercator EPSG 102100 (3857)

For more information, visit  
<https://qldglobe.information.qld.gov.au/help-info/Contact-us.html>

Includes material © State of Queensland 2022. You are responsible for ensuring that the map is suitable for your purposes. The State of Queensland makes no representation or warranties in relation to the map contents and disclaims all liability.

If imagery is displayed, imagery includes material © CNES reproduced under license from Airbus DS, all rights reserved  
© 21AT © Earth-i, all rights reserved, 2019



# Shean St Gully

Approximate Area: 0.426ha

24°34'8"S 149°58'11"E

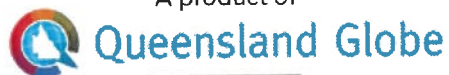
24°34'5"S 149°58'15"E



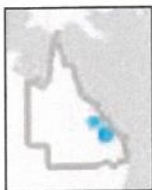
24°34'12"S 149°58'15"E

24°34'9"S 149°58'19"E

A product of



Legend located on next page



Includes material © State of Queensland 2022. You are responsible for ensuring that the map is suitable for your purposes. The State of Queensland makes no representation or warranties in relation to the map contents and disclaims all liability.

If imagery is displayed, imagery includes material © CNES reproduced under license from Airbus DS, all rights reserved © 21AT © Earth-i, all rights reserved, 2019



Printed at: A4

Print date: 24/1/2023

Not suitable for accurate measurement.  
Projection: Web Mercator EPSG 102100 (3857)

For more information, visit  
<https://qldglobe.information.qld.gov.au/help-info/Contact-us.html>



**Queensland  
Government**  
Department of Resources



# Rotary Park

Approximate Area: 2.12ha

24°33'56"S 149°58'33"E

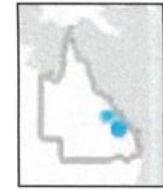
24°33'51"S 149°58'40"E



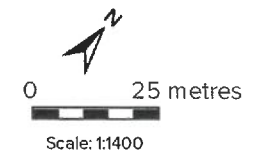
24°34'2"S 149°58'38"E

24°33'56"S 149°58'45"E

A product of  
**Queensland Globe**



Legend located on next page



Printed at: A4  
Print date: 24/1/2023

Not suitable for accurate measurement.  
**Projection:** Web Mercator EPSG 102100 (3857)

For more information, visit  
<https://qldglobe.information.qld.gov.au/help-info/Contact-us.html>

Includes material © State of Queensland 2022. You are responsible for ensuring that the map is suitable for your purposes. The State of Queensland makes no representation or warranties in relation to the map contents and disclaims all liability.

If imagery is displayed, imagery includes material © CNES reproduced under license from Airbus DS, all rights reserved © 21AT © Earth-i, all rights reserved, 2019



# Rogers St Island

Approximate Area: 0.136ha

24°34'28"S 149°58'11"E

24°34'30"S 149°58'16"E



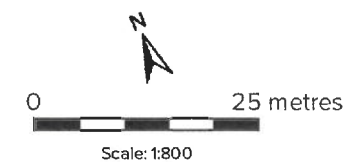
24°34'32"S 149°58'9"E

24°34'34"S 149°58'14"E

A product of  
**Queensland Globe**



Legend located on next page



Printed at: A4  
Print date: 24/1/2023

Not suitable for accurate measurement.  
**Projection:** Web Mercator EPSG 102100 (3857)

For more information, visit  
<https://qldglobe.information.qld.gov.au/help-info/Contact-us.html>

Includes material © State of Queensland 2022. You are responsible for ensuring that the map is suitable for your purposes. The State of Queensland makes no representation or warranties in relation to the map contents and disclaims all liability.

If imagery is displayed, imagery includes material © CNES reproduced under license from Airbus DS, all rights reserved  
© 21AT © Earth-i, all rights reserved, 2019

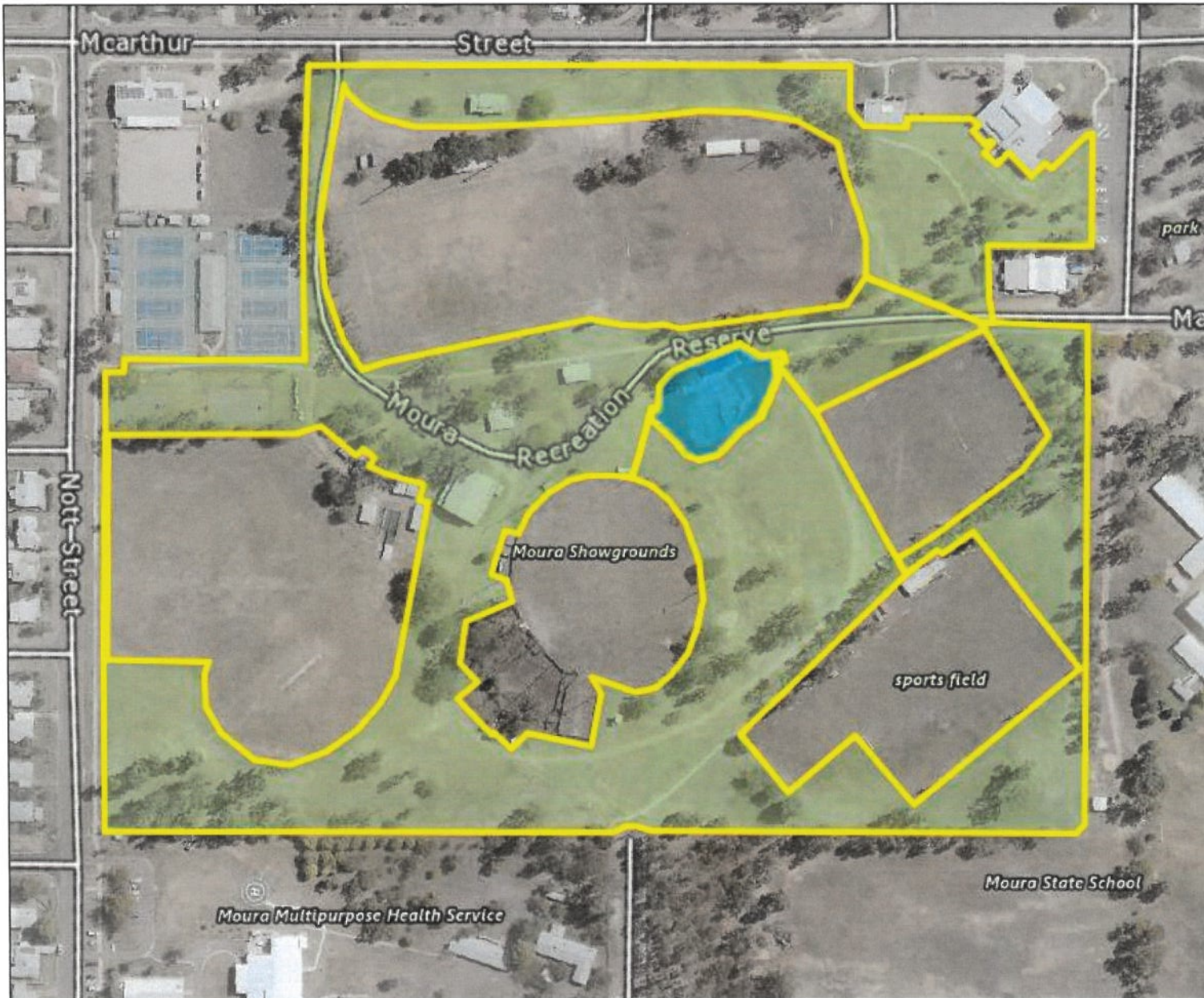


# Rec Grounds

Approximate Area: 8.16ha

24°34'25"S 149°58'20"E

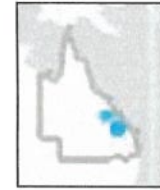
24°34'13"S 149°58'36"E



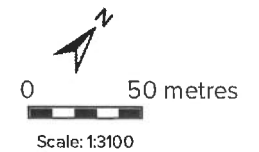
24°34'37"S 149°58'32"E

24°34'25"S 149°58'47"E

A product of  
**Queensland Globe**



Legend located on next page



Printed at: A4  
Print date: 24/1/2023

Not suitable for accurate measurement.  
Projection: Web Mercator EPSG 102100 (3857)

For more information, visit  
<https://qldglobe.information.qld.gov.au/help-info/Contact-us.html>

Includes material © State of Queensland 2022. You are responsible for ensuring that the map is suitable for your purposes. The State of Queensland makes no representation or warranties in relation to the map contents and disclaims all liability.

If imagery is displayed, imagery includes material © CNES reproduced under license from Airbus DS, all rights reserved  
© 21AT © Earth-i, all rights reserved, 2019

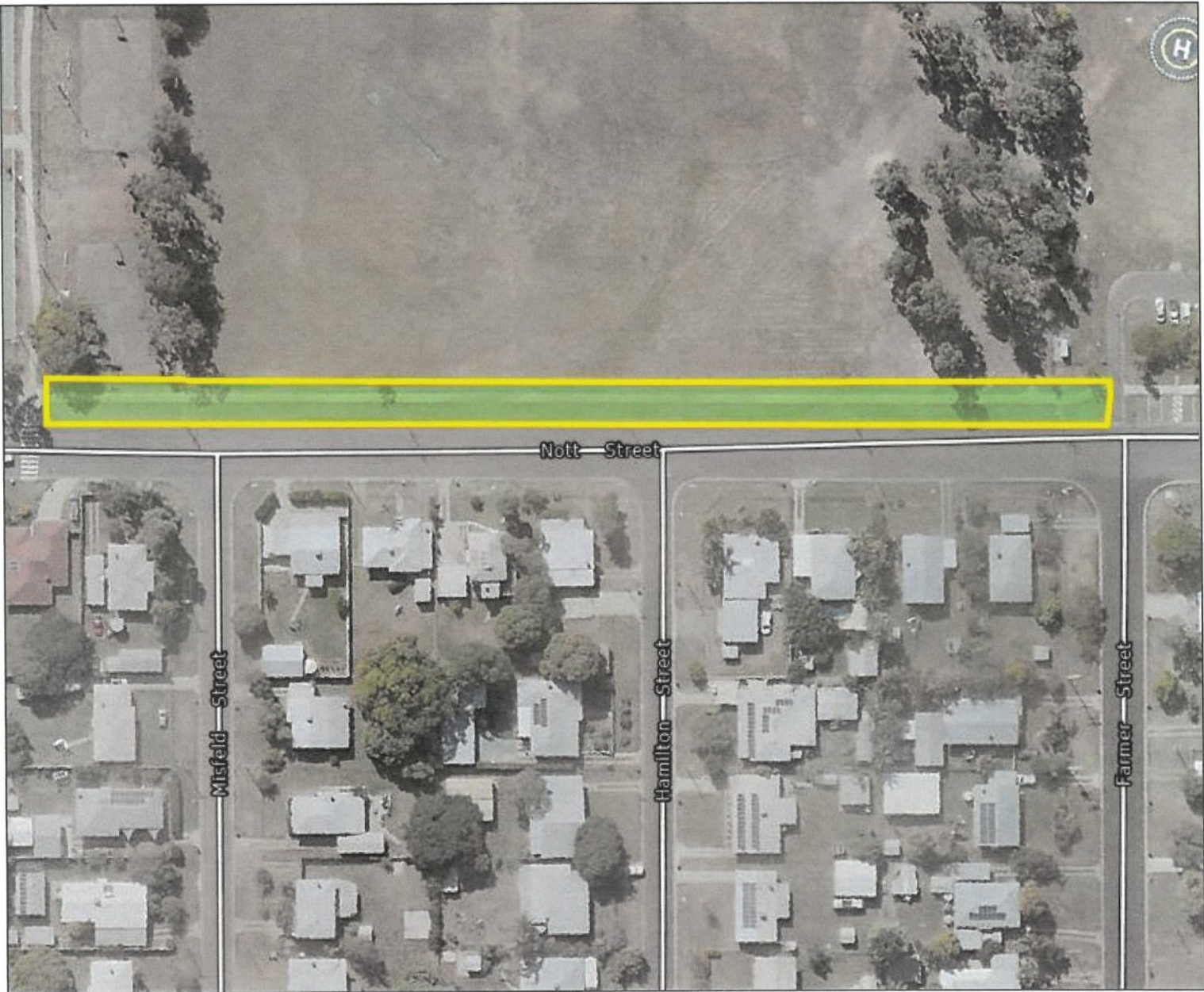


# Nott St Footpath

Approximate Area: 490m<sup>2</sup>

24°34'27"S 149°58'28"E

24°34'33"S 149°58'34"E

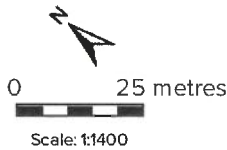


24°34'31"S 149°58'22"E

24°34'38"S 149°58'28"E



Legend located on next page



Printed at: A4

Print date: 24/1/2023

Not suitable for accurate measurement.  
**Projection:** Web Mercator EPSG 102100 (3857)

For more information, visit  
<https://qldglobe.information.qld.gov.au/help-info/Contact-us.html>

Includes material © State of Queensland 2022. You are responsible for ensuring that the map is suitable for your purposes. The State of Queensland makes no representation or warranties in relation to the map contents and disclaims all liability.

If imagery is displayed, imagery includes material © CNES reproduced under license from Airbus DS, all rights reserved  
© 21AT © Earth-i, all rights reserved, 2019

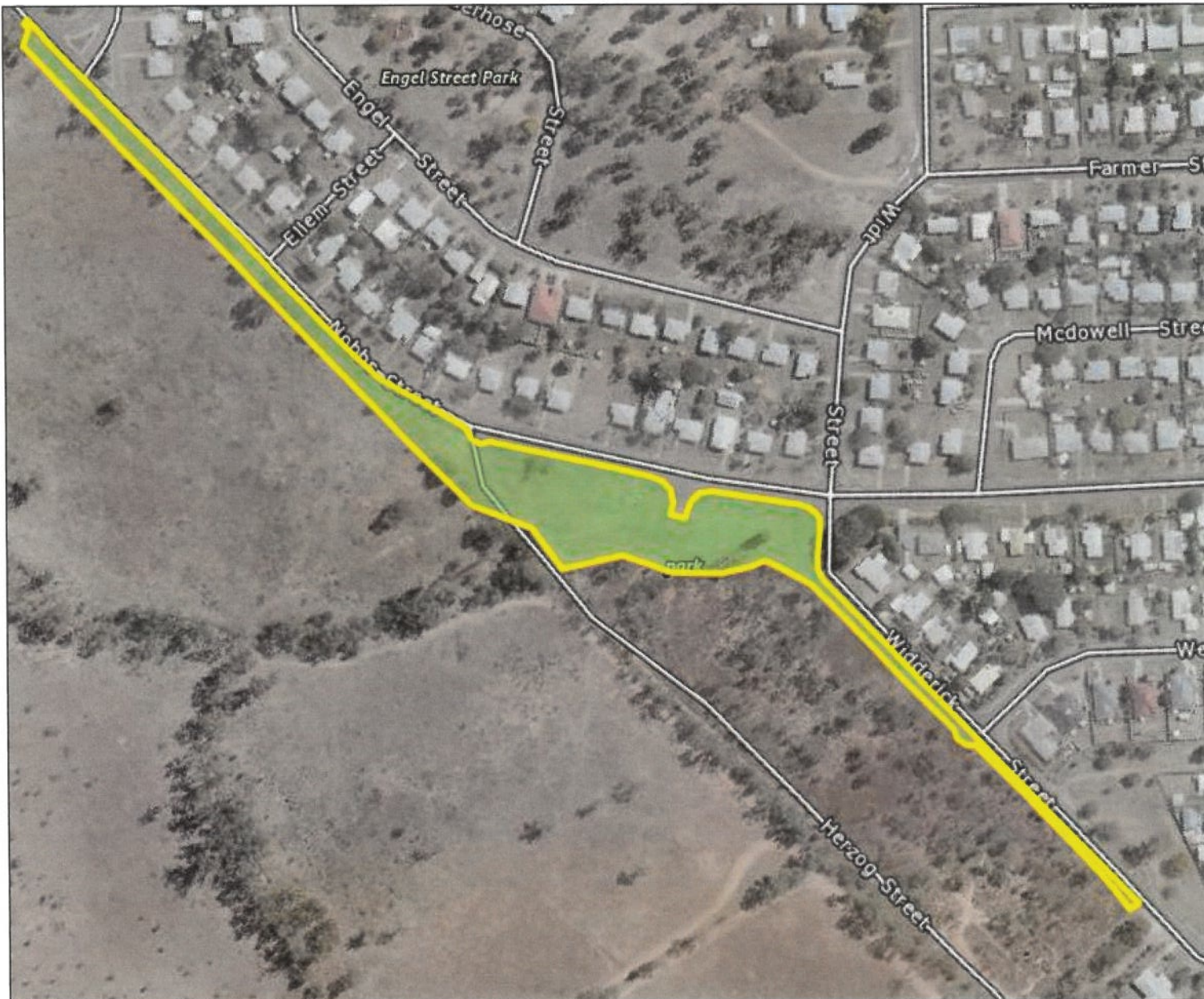


# Nobbs St

Approximate Area: 1.68ha

24°34'49"S 149°58'5"E

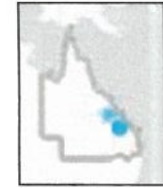
24°34'35"S 149°58'26"E



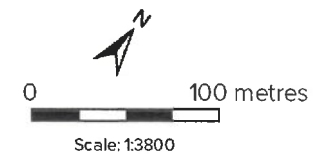
24°35'4"S 149°58'18"E

24°34'50"S 149°58'38"E

A product of  
**Queensland Globe**



Legend located on next page



Printed at: A4

Print date: 24/1/2023

Not suitable for accurate measurement.  
Projection: Web Mercator EPSG 102100 (3857)

For more information, visit  
<https://qldglobe.information.qld.gov.au/help-info/Contact-us.html>

Includes material © State of Queensland 2022. You are responsible for ensuring that the map is suitable for your purposes. The State of Queensland makes no representation or warranties in relation to the map contents and disclaims all liability.

If imagery is displayed, imagery includes material © CNES reproduced under license from Airbus DS, all rights reserved  
© 21AT © Earth-i, all rights reserved, 2019



# Moura Mine Lookout - Memorial Drive

Approximate Area: 0.622ha

24°34'59"S 150°1'48"E

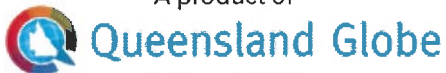
24°34'54"S 150°1'54"E



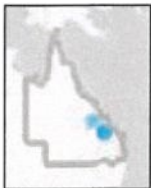
24°35'4"S 150°1'54"E

24°34'59"S 150°1'59"E

A product of

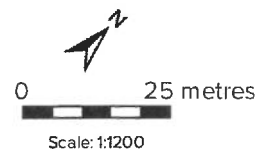


Legend located on next page



Includes material © State of Queensland 2022. You are responsible for ensuring that the map is suitable for your purposes. The State of Queensland makes no representation or warranties in relation to the map contents and disclaims all liability.

If imagery is displayed, imagery includes material © CNES reproduced under license from Airbus DS, all rights reserved © 21AT © Earth-i, all rights reserved, 2019



Printed at: A4  
Print date: 24/1/2023

Not suitable for accurate measurement.  
Projection: Web Mercator EPSG 102100 (3857)

For more information, visit  
<https://qldglobe.information.qld.gov.au/help-info/Contact-us.html>





# Moura Binderee Rd

Approximate Area: 1ha

24°33'50"S 149°58'23"E

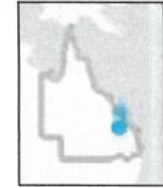
24°33'51"S 149°58'34"E



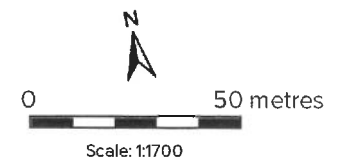
24°33'58"S 149°58'21"E

24°33'60"S 149°58'33"E

A product of  
**Queensland Globe**



Legend located on next page



Printed at: A4

Print date: 24/1/2023

Not suitable for accurate measurement.  
Projection: Web Mercator EPSG 102100 (3857)

For more information, visit  
<https://qldglobe.information.qld.gov.au/help-info/Contact-us.html>

Includes material © State of Queensland 2022. You are responsible for ensuring that the map is suitable for your purposes. The State of Queensland makes no representation or warranties in relation to the map contents and disclaims all liability.

If imagery is displayed, imagery includes material © CNES reproduced under license from Airbus DS, all rights reserved  
© 21AT © Earth-i, all rights reserved, 2019

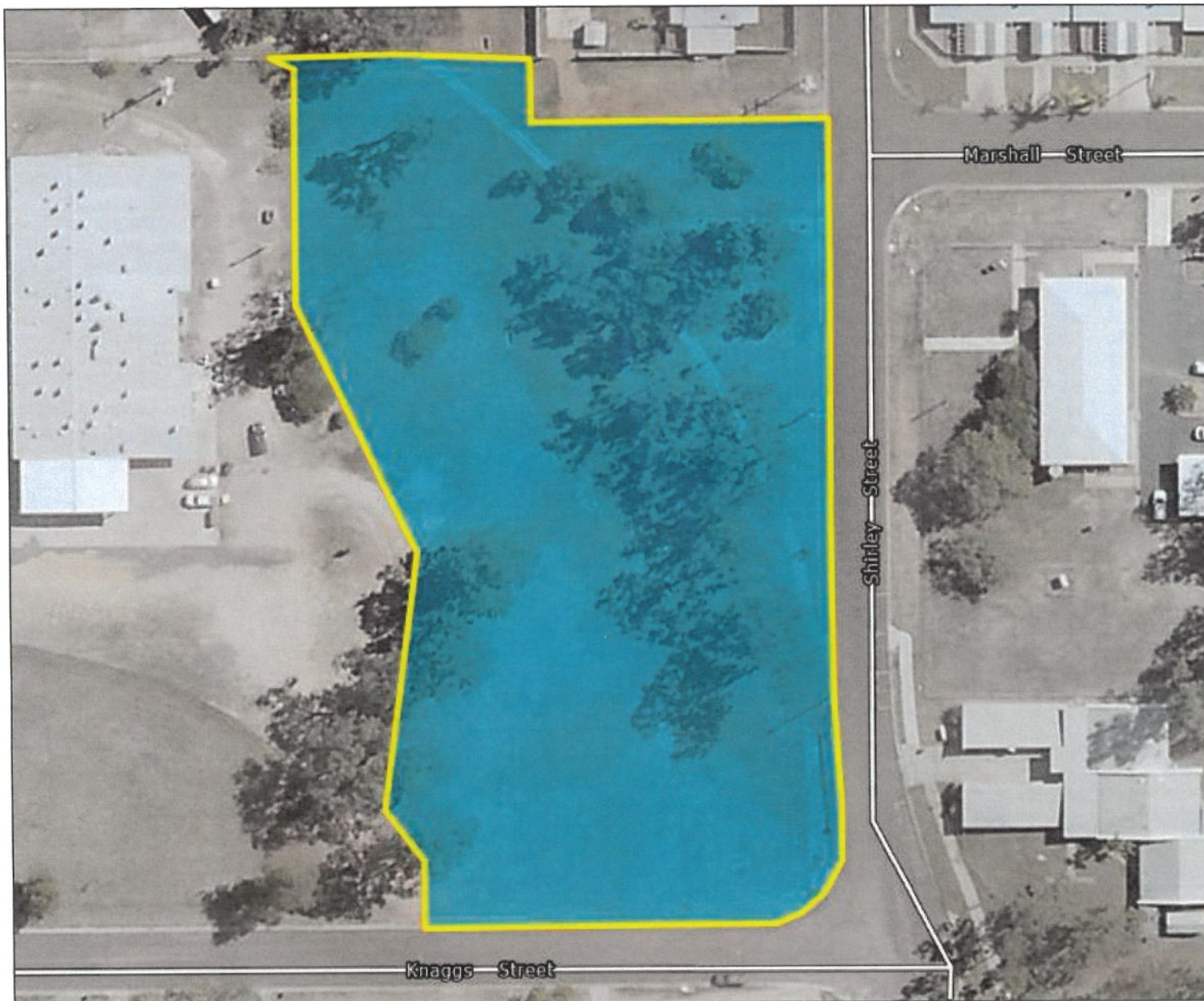


# Memorial Gully

Approximate Area: 0.96ha

24°34'16"S 149°58'20"E

24°34'12"S 149°58'25"E



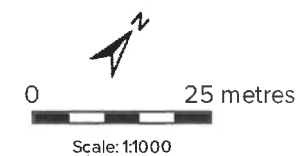
24°34'20"S 149°58'23"E

24°34'16"S 149°58'28"E

A product of  
**Queensland Globe**



Legend located on next page



Printed at: A4

Print date: 24/1/2023

Not suitable for accurate measurement.

**Projection:** Web Mercator EPSG 102100 (3857)

For more information, visit  
<https://qldglobe.information.qld.gov.au/help-info/Contact-us.html>

Includes material © State of Queensland 2022. You are responsible for ensuring that the map is suitable for your purposes. The State of Queensland makes no representation or warranties in relation to the map contents and disclaims all liability.

If imagery is displayed, imagery includes material © CNES reproduced under license from Airbus DS, all rights reserved  
© 21AT © Earth-i, all rights reserved, 2019





# Medium Strip - Elders Island - Dawson Highway

Approximate Area: 0.857ha

24°33'59"S 149°58'30"E

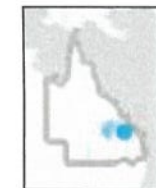
24°33'49"S 149°58'32"E



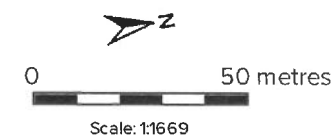
24°33'60"S 149°58'40"E

24°33'50"S 149°58'41"E

A product of  
**Queensland Globe**



Legend located on next page



Printed at: A4  
Print date: 24/1/2023

Not suitable for accurate measurement.  
**Projection:** Web Mercator EPSG 102100 (3857)

For more information, visit  
<https://qldglobe.information.qld.gov.au/help-info/Contact-us.html>

Includes material © State of Queensland 2022. You are responsible for ensuring that the map is suitable for your purposes. The State of Queensland makes no representation or warranties in relation to the map contents and disclaims all liability.

If imagery is displayed, imagery includes material © CNES reproduced under license from Airbus D.S., all rights reserved  
© 21AT © Earth-i, all rights reserved, 2019



# Medium Strip - Caravan Park - Dawson Highway

Approximate Area: 1300m<sup>2</sup>

24°33'51"S 149°58'38"E

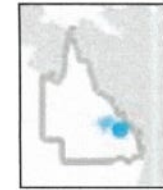
24°33'46"S 149°58'40"E



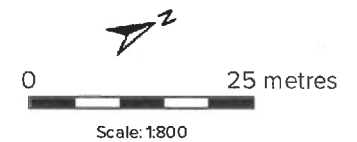
24°33'52"S 149°58'42"E

24°33'48"S 149°58'44"E

A product of  
**Queensland Globe**



Legend located on next page



Printed at: A4  
Print date: 24/1/2023

Not suitable for accurate measurement.  
Projection: Web Mercator EPSG 102100 (3857)

For more information, visit  
<https://qldglobe.information.qld.gov.au/help-info/Contact-us.html>

Includes material © State of Queensland 2022. You are responsible for ensuring that the map is suitable for your purposes. The State of Queensland makes no representation or warranties in relation to the map contents and disclaims all liability.

If imagery is displayed, imagery includes material © CNES reproduced under license from Airbus DS, all rights reserved  
© 21AT © Earth-1, all rights reserved, 2019



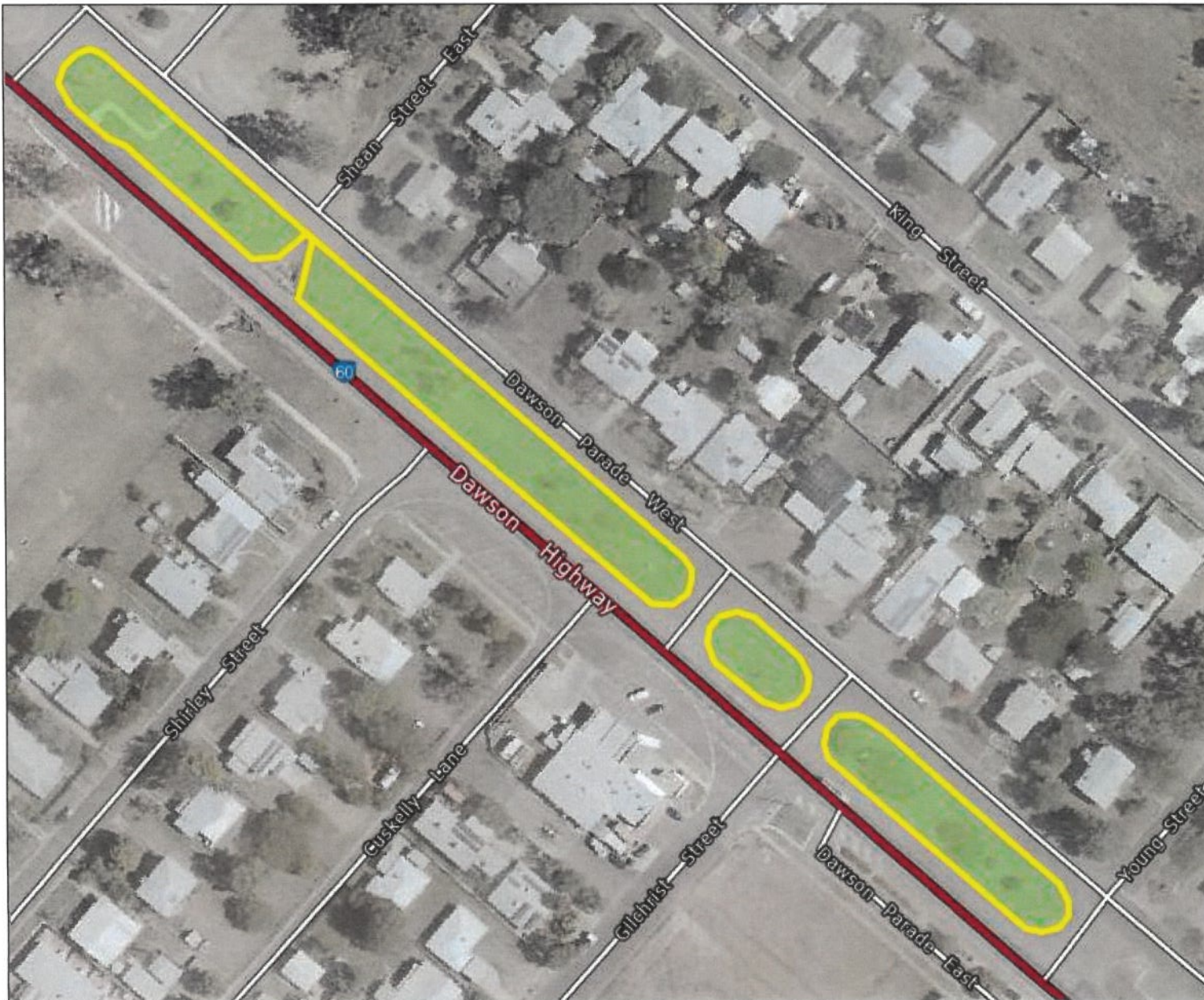


# Medium Strip 2, 3 and 4 - Dawson Highway

Approximate Area: 0.47ha

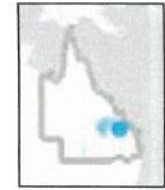
24°34'12"S 149°58'14"E

24°34'1"S 149°58'16"E

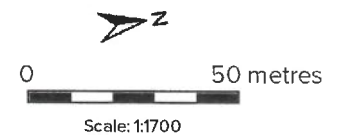


24°34'13"S 149°58'24"E

24°34'3"S 149°58'26"E



Legend located on next page



Printed at: A4  
Print date: 24/1/2023

Not suitable for accurate measurement.  
Projection: Web Mercator EPSG 102100 (3857)

For more information, visit  
<https://qldglobe.information.qld.gov.au/help-info/Contact-us.html>

Includes material © State of Queensland 2022. You are responsible for ensuring that the map is suitable for your purposes. The State of Queensland makes no representation or warranties in relation to the map contents and disclaims all liability.

If imagery is displayed, imagery includes material © CNES reproduced under license from Airbus DS, all rights reserved  
© 21AT © Earth-i, all rights reserved, 2019



# Medium Strip 1 - Dawson Hwy

Approximate Area: 5847m<sup>2</sup>

24°34'16"S 149°57'60"E

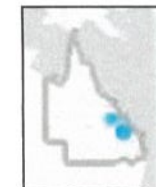
24°34'7"S 149°58'12"E



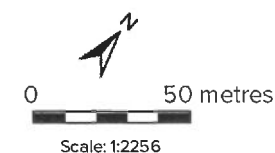
24°34'25"S 149°58'8"E

24°34'16"S 149°58'20"E

A product of  
**Queensland Globe**



Legend located on next page



Printed at: A4

Print date: 24/1/2023

Not suitable for accurate measurement.  
Projection: Web Mercator EPSG 102100 (3857)

For more information, visit  
<https://qldglobe.information.qld.gov.au/help-info/Contact-us.html>

Includes material © State of Queensland 2022. You are responsible for ensuring that the map is suitable for your purposes. The State of Queensland makes no representation or warranties in relation to the map contents and disclaims all liability.

If imagery is displayed, imagery includes material © CNES reproduced under license from Airbus DS, all rights reserved  
© 21AT © Earth-i, all rights reserved, 2019



# McArthur St Footpath

Approximate Area: 540m<sup>2</sup>

24°34'21"S 149°58'22"E

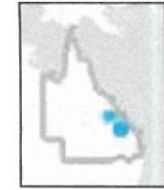
24°34'15"S 149°58'30"E



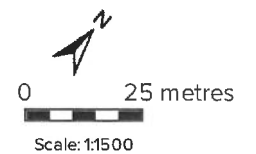
24°34'26"S 149°58'28"E

24°34'20"S 149°58'36"E

A product of  
**Queensland Globe**



Legend located on next page



Printed at: A4  
Print date: 24/1/2023

Not suitable for accurate measurement.  
**Projection:** Web Mercator EPSG 102100 (3857)

For more information, visit  
<https://qldglobe.information.qld.gov.au/help-info/Contact-us.html>

Includes material © State of Queensland 2022. You are responsible for ensuring that the map is suitable for your purposes. The State of Queensland makes no representation or warranties in relation to the map contents and disclaims all liability.

If imagery is displayed, imagery includes material © CNES reproduced under license from Airbus D.S., all rights reserved © 21AT © Earth-i, all rights reserved, 2019



# Lions Park, Moura

Approximate Area: 1.93ha

24°34'8"S 149°58'19"E

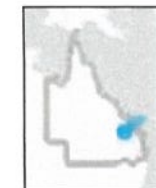
24°34'13"S 149°58'24"E



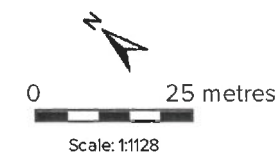
24°34'12"S 149°58'14"E

24°34'17"S 149°58'19"E

A product of  
**Queensland Globe**



Legend located on next page



Printed at: A4  
Print date: 24/1/2023

Not suitable for accurate measurement.  
**Projection:** Web Mercator EPSG 102100 (3857)

For more information, visit  
<https://qldglobe.information.qld.gov.au/help-info/Contact-us.html>

Includes material © State of Queensland 2022. You are responsible for ensuring that the map is suitable for your purposes. The State of Queensland makes no representation or warranties in relation to the map contents and disclaims all liability.

If imagery is displayed, imagery includes material © CNES reproduced under license from Airbus DS, all rights reserved © 21AT © Earth-i, all rights reserved, 2019



# King St Gully

Approximate Area: 0.29ha

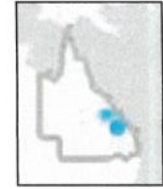
24°34'7"S 149°58'10"E

24°34'3"S 149°58'14"E

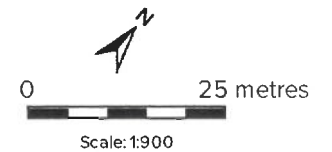


24°34'10"S 149°58'13"E

24°34'7"S 149°58'17"E



Legend located on next page



Printed at: A4

Print date: 24/1/2023

Not suitable for accurate measurement.  
Projection: Web Mercator EPSG 102100 (3857)

For more information, visit  
<https://qldglobe.information.qld.gov.au/help-info/Contact-us.html>

Includes material © State of Queensland 2022. You are responsible for ensuring that the map is suitable for your purposes. The State of Queensland makes no representation or warranties in relation to the map contents and disclaims all liability.

If imagery is displayed, imagery includes material © CNES reproduced under license from Airbus DS, all rights reserved  
© 21AT © Earth-i, all rights reserved, 2019



# Hicks St - Rogers St

Approximate Area: 0.55ha

24°34'28"S 149°57'55"E

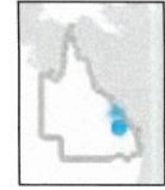
24°34'25"S 149°58'11"E



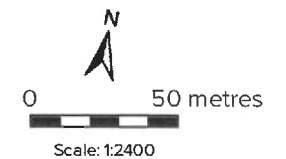
24°34'40"S 149°57'58"E

24°34'37"S 149°58'14"E

A product of  
**Queensland Globe**



Legend located on next page



Printed at: A4  
Print date: 24/1/2023

Not suitable for accurate measurement.  
Projection: Web Mercator EPSG 102100 (3857)

For more information, visit  
<https://qldglobe.information.qld.gov.au/help-info/Contact-us.html>

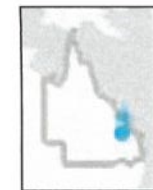
Includes material © State of Queensland 2022. You are responsible for ensuring that the map is suitable for your purposes. The State of Queensland makes no representation or warranties in relation to the map contents and disclaims all liability.

If imagery is displayed, imagery includes material © CNES reproduced under license from Airbus DS, all rights reserved © 21AT © Earth-i, all rights reserved, 2019

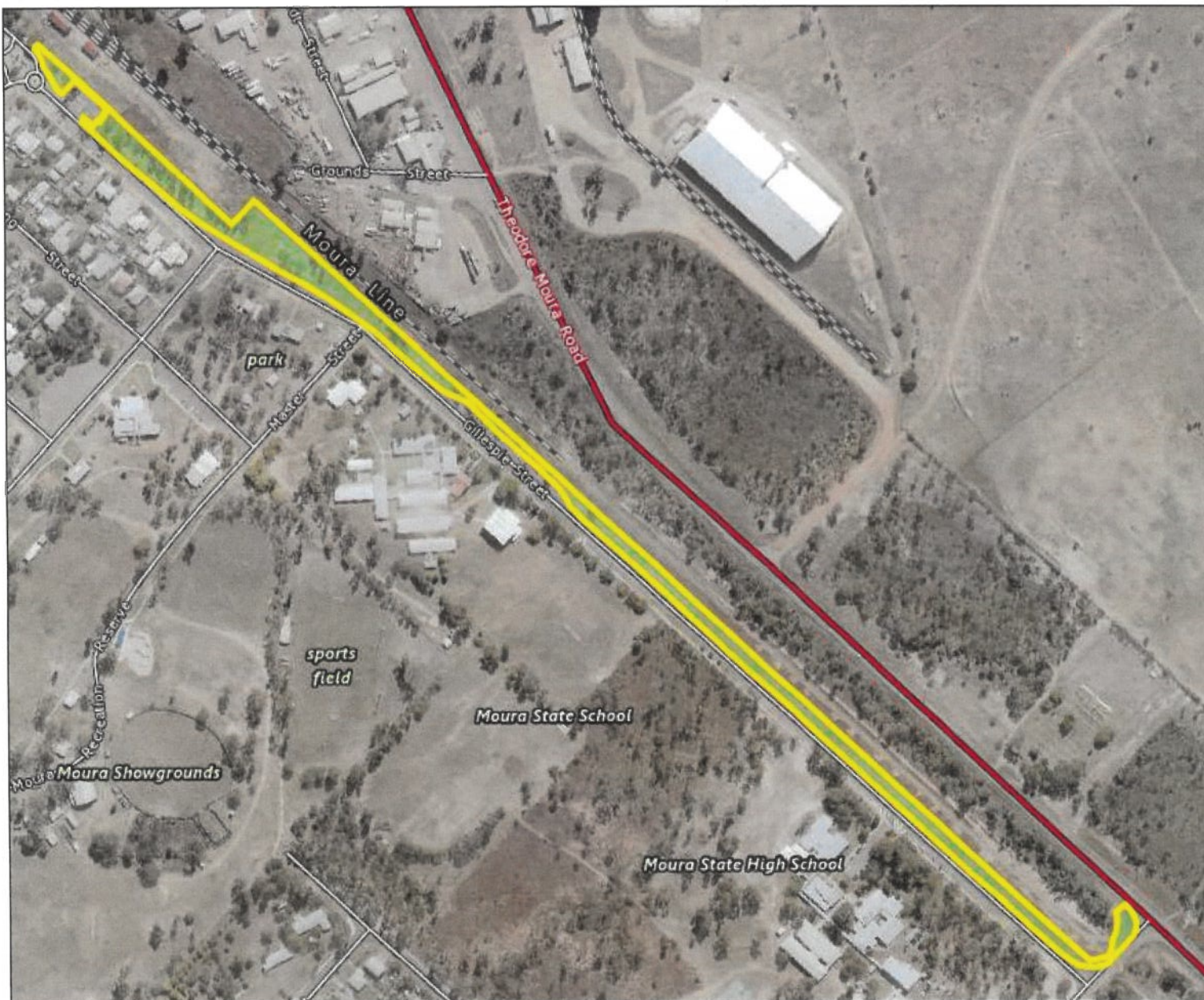


**Approximate Area: 1.79ha**

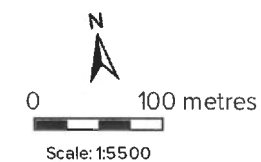
24°34'9"S 149°59'10"E



Legend located on next page



24°34'36"S 149°59'6"E



Printed at: A4  
Print date: 24/1/2023

Not suitable for accurate measurement.  
Projection: Web Mercator EPSG 102100 (3857)

For more information, visit  
<https://qldglobe.information.qld.gov.au/help-info/Contact-us.html>

Includes material © State of Queensland 2022. You are responsible for ensuring that the map is suitable for your purposes. The State of Queensland makes no representation or warranties in relation to the map contents and disclaims all liability.

If imagery is displayed, imagery includes material © CNES  
reproduced under license from Airbus DS, all rights reserved  
© 21AT © Earth-i, all rights reserved, 2019



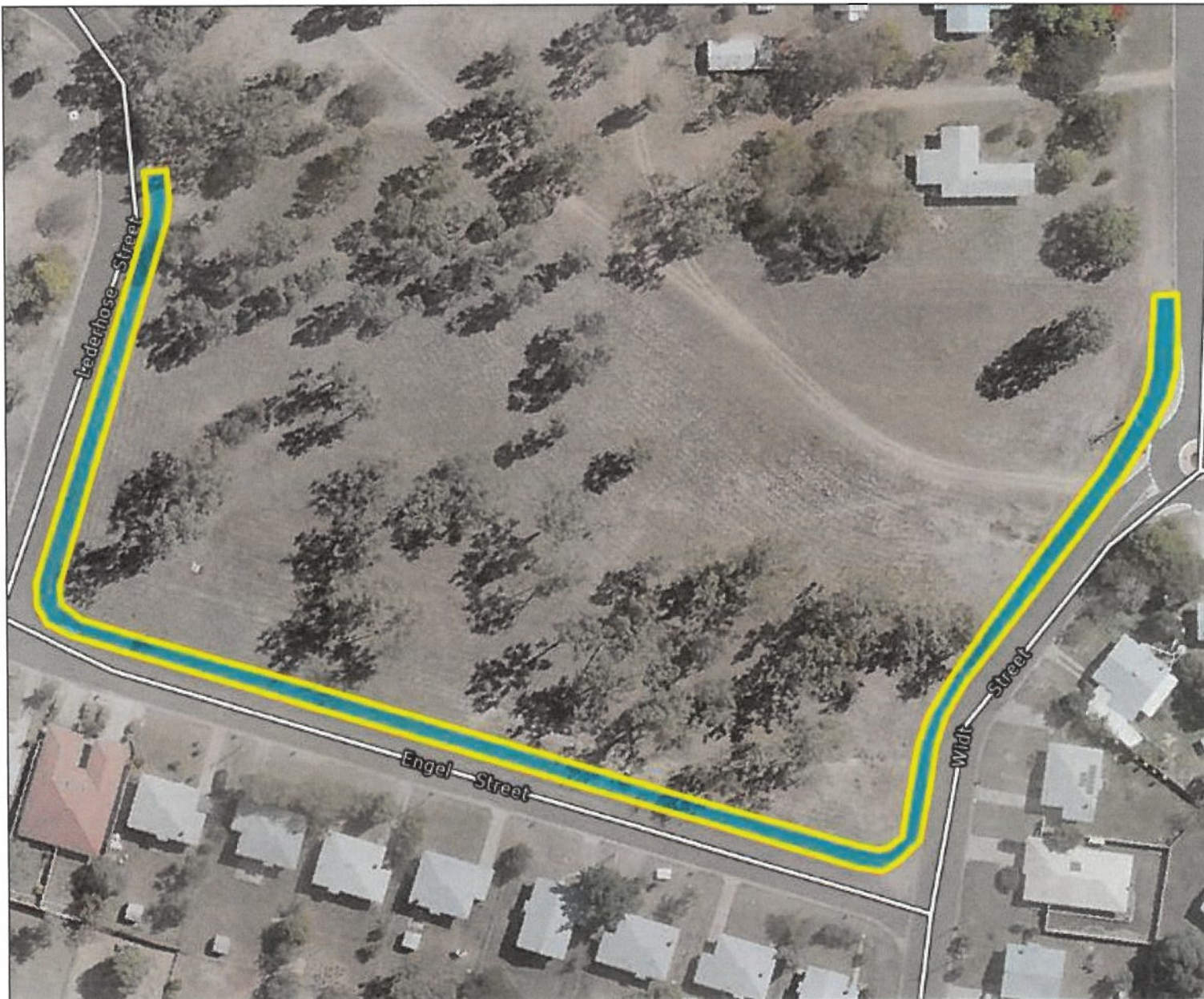


# Engle St Footpath

Approximate Area: 0.167ha

24°34'44"S 149°58'14"E

24°34'38"S 149°58'21"E



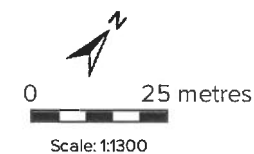
24°34'49"S 149°58'19"E

24°34'43"S 149°58'26"E

A product of  
**Queensland Globe**



Legend located on next page



Printed at: A4  
Print date: 24/1/2023

Not suitable for accurate measurement.  
Projection: Web Mercator EPSG 102100 (3857)

For more information, visit  
<https://qldglobe.information.qld.gov.au/help-info/Contact-us.html>

Includes material © State of Queensland 2022. You are responsible for ensuring that the map is suitable for your purposes. The State of Queensland makes no representation or warranties in relation to the map contents and disclaims all liability.

If imagery is displayed, imagery includes material © CNES reproduced under license from Airbus DS, all rights reserved  
© 21AT © Earth-i, all rights reserved, 2019





# Engle Park

Approximate Area: 1.19ha

24°34'45"S 149°58'8"E

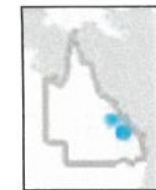
24°34'41"S 149°58'15"E



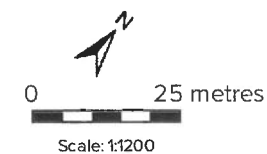
24°34'50"S 149°58'13"E

24°34'45"S 149°58'19"E

A product of  
**Queensland Globe**



Legend located on next page



Printed at: A4  
Print date: 24/1/2023

Not suitable for accurate measurement.  
Projection: Web Mercator EPSG 102100 (3857)

For more information, visit  
<https://qldglobe.information.qld.gov.au/help-info/Contact-us.html>

Includes material © State of Queensland 2022. You are responsible for ensuring that the map is suitable for your purposes. The State of Queensland makes no representation or warranties in relation to the map contents and disclaims all liability.

If imagery is displayed, imagery includes material © CNES reproduced under license from Airbus DS, all rights reserved  
© 21AT © Earth-i, all rights reserved, 2019

 **Queensland Government**  
Department of Resources



# Dog Park

Approximate Area: 564m<sup>2</sup>

24°34'6"S 149°58'34"E

24°34'6"S 149°58'38"E

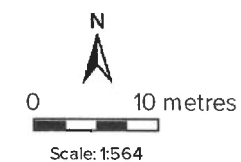


24°34'9"S 149°58'34"E

24°34'9"S 149°58'38"E



Legend located on next page



Printed at: A4  
Print date: 24/1/2023

Not suitable for accurate measurement.  
Projection: Web Mercator EPSG 102100 (3857)

For more information, visit  
<https://qldglobe.information.qld.gov.au/help-info/Contact-us.html>

Includes material © State of Queensland 2022. You are responsible for ensuring that the map is suitable for your purposes. The State of Queensland makes no representation or warranties in relation to the map contents and disclaims all liability.

If imagery is displayed, imagery includes material © CNES reproduced under license from Airbus DS, all rights reserved  
© 21AT © Earth-i, all rights reserved, 2019



# Council Block - Elliot St

Approximate Area: 0.116ha

24°34'46"S 149°58'32"E

24°34'44"S 149°58'35"E



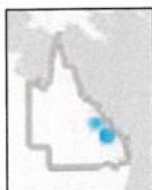
24°34'49"S 149°58'35"E

24°34'47"S 149°58'38"E

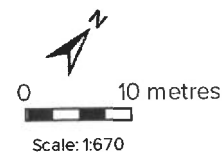


A product of

Queensland Globe



Legend located on next page



Printed at: A4

Print date: 24/1/2023

Not suitable for accurate measurement.  
Projection: Web Mercator EPSG 102100 (3857)

For more information, visit  
<https://qldglobe.information.qld.gov.au/help-info/Contact-us.html>

Includes material © State of Queensland 2022. You are responsible for ensuring that the map is suitable for your purposes. The State of Queensland makes no representation or warranties in relation to the map contents and disclaims all liability.

If imagery is displayed, imagery includes material © CNES reproduced under license from Airbus DS, all rights reserved © 21AT © Earth-i, all rights reserved, 2019



**Queensland  
Government**  
Department of Resources



# Council Block - 62 Dawson Parade East

Approximate Area: 930m<sup>2</sup>

24°34'23"S 149°58'0"E

24°34'21"S 149°58'3"E



24°34'26"S 149°58'3"E

24°34'23"S 149°58'6"E

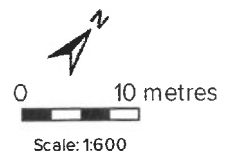


A product of

**Queensland Globe**



Legend located on next page



Printed at: A4

Print date: 24/11/2023

Not suitable for accurate measurement.

Projection: Web Mercator EPSG 102100 (3857)

For more information, visit  
<https://qldglobe.information.qld.gov.au/help-info/Contact-us.html>

Includes material © State of Queensland 2022. You are responsible for ensuring that the map is suitable for your purposes. The State of Queensland makes no representation or warranties in relation to the map contents and disclaims all liability.

If imagery is displayed, imagery includes material © CNES reproduced under license from Airbus DS, all rights reserved © 21AT © Earth-i, all rights reserved, 2019



**Queensland  
Government**

Department of Resources

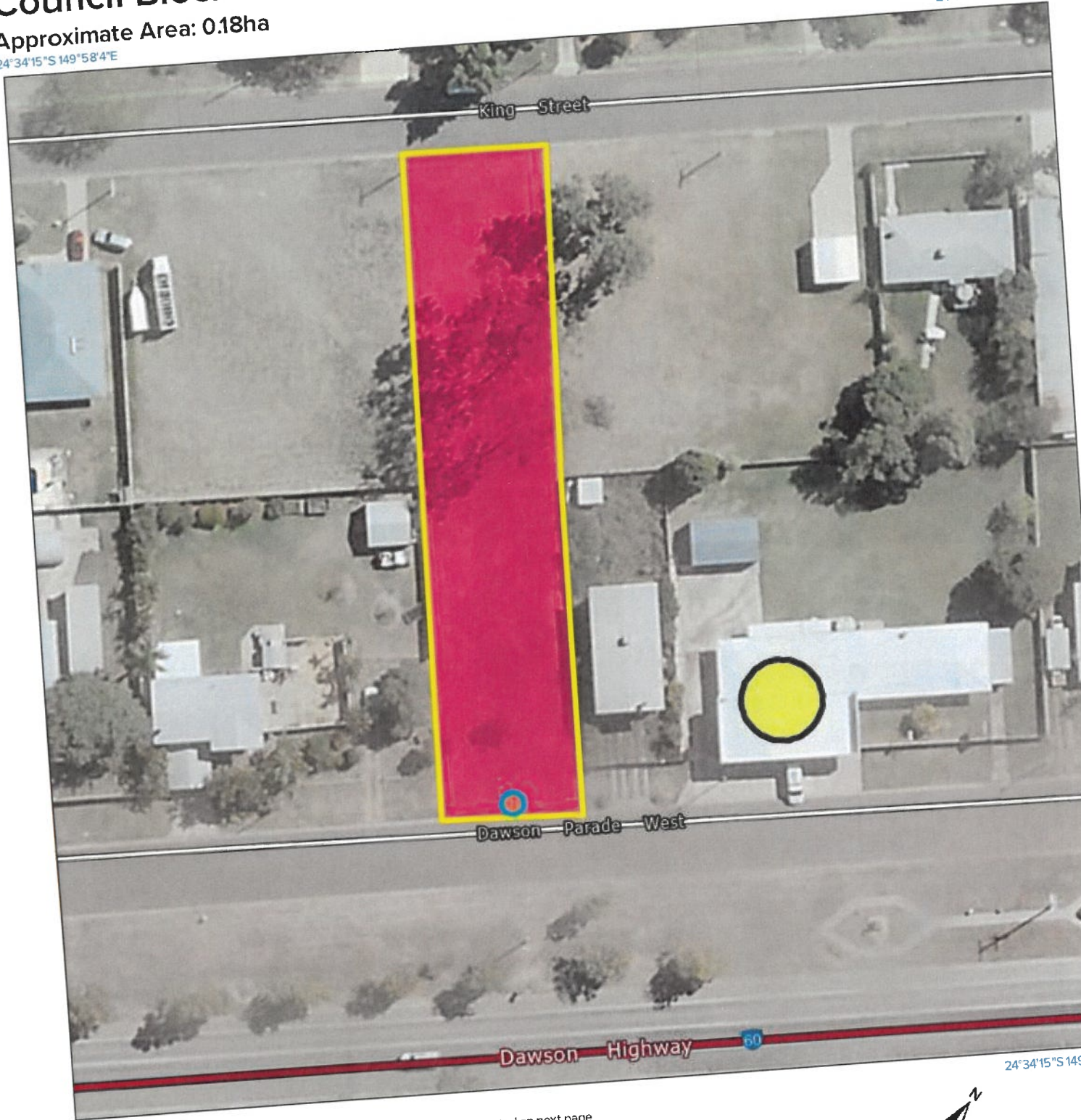


# Council Block - 15 Dawson Parade West

Approximate Area: 0.18ha

24°34'15"S 149°58'4"E

24°34'12"S 149°58'7"E



24°34'18"S 149°58'7"E

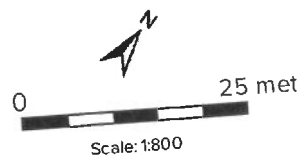
A product of  
**Queensland Globe**



Includes material © State of Queensland 2022. You are responsible for ensuring that the map is suitable for your purposes. The State of Queensland makes no representation or warranties in relation to the map contents and disclaims all liability.

If imagery is displayed, imagery includes material © CNES reproduced under license from Airbus DS, all rights reserved © 21AT © Earth-i, all rights reserved, 2019

Legend located on next page



Printed at: A4

Print date: 24/1/2023

Not suitable for accurate measurement.  
Projection: Web Mercator EPSG 102100 (38)

For more information, visit  
<https://qldglobe.information.qld.gov.au/help-info-us.html>

 **Queensland Government**  
Department of Resources



# Cemetery

Approximate Area: 0.65ha

24°34'25"S 149°58'60"E

24°34'26"S 149°59'7"E



24°34'31"S 149°58'59"E

24°34'32"S 149°59'6"E



A product of

Queensland Globe



Legend located on next page

Includes material © State of Queensland 2022. You are responsible for ensuring that the map is suitable for your purposes. The State of Queensland makes no representation or warranties in relation to the map contents and disclaims all liability.

If imagery is displayed, imagery includes material © CNES reproduced under license from Airbus DS, all rights reserved © 21AT © Earth-i, all rights reserved, 2019



0 25 metres

Scale: 1:1128

Printed at: A4

Print date: 24/1/2023

Not suitable for accurate measurement.

Projection: Web Mercator EPSG 102100 (3857)

For more information, visit  
<https://qldglobe.information.qld.gov.au/help-info/Contact-us.html>



**Queensland  
Government**

Department of Resources



# Cemetery Front - Moura Theodore Rd

Approximate Area: 0.867ha

24°34'21"S 149°58'53"E

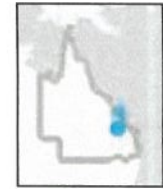
24°34'24"S 149°59'10"E



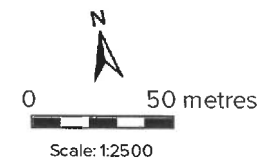
24°34'34"S 149°58'51"E

24°34'36"S 149°59'8"E

A product of  
**Queensland Globe**



Legend located on next page



Printed at: A4  
Print date: 24/1/2023

Not suitable for accurate measurement.  
Projection: Web Mercator EPSG 102100 (3857)

For more information, visit  
<https://qldglobe.information.qld.gov.au/help-info/Contact-us.html>

Includes material © State of Queensland 2022. You are responsible for ensuring that the map is suitable for your purposes. The State of Queensland makes no representation or warranties in relation to the map contents and disclaims all liability.

If imagery is displayed, imagery includes material © CNES reproduced under license from Airbus DS, all rights reserved  
© 21AT © Earth-i, all rights reserved, 2019

 **Queensland Government**  
Department of Resources